



Statistical Update on Aircraft Operations

May 13, 2015

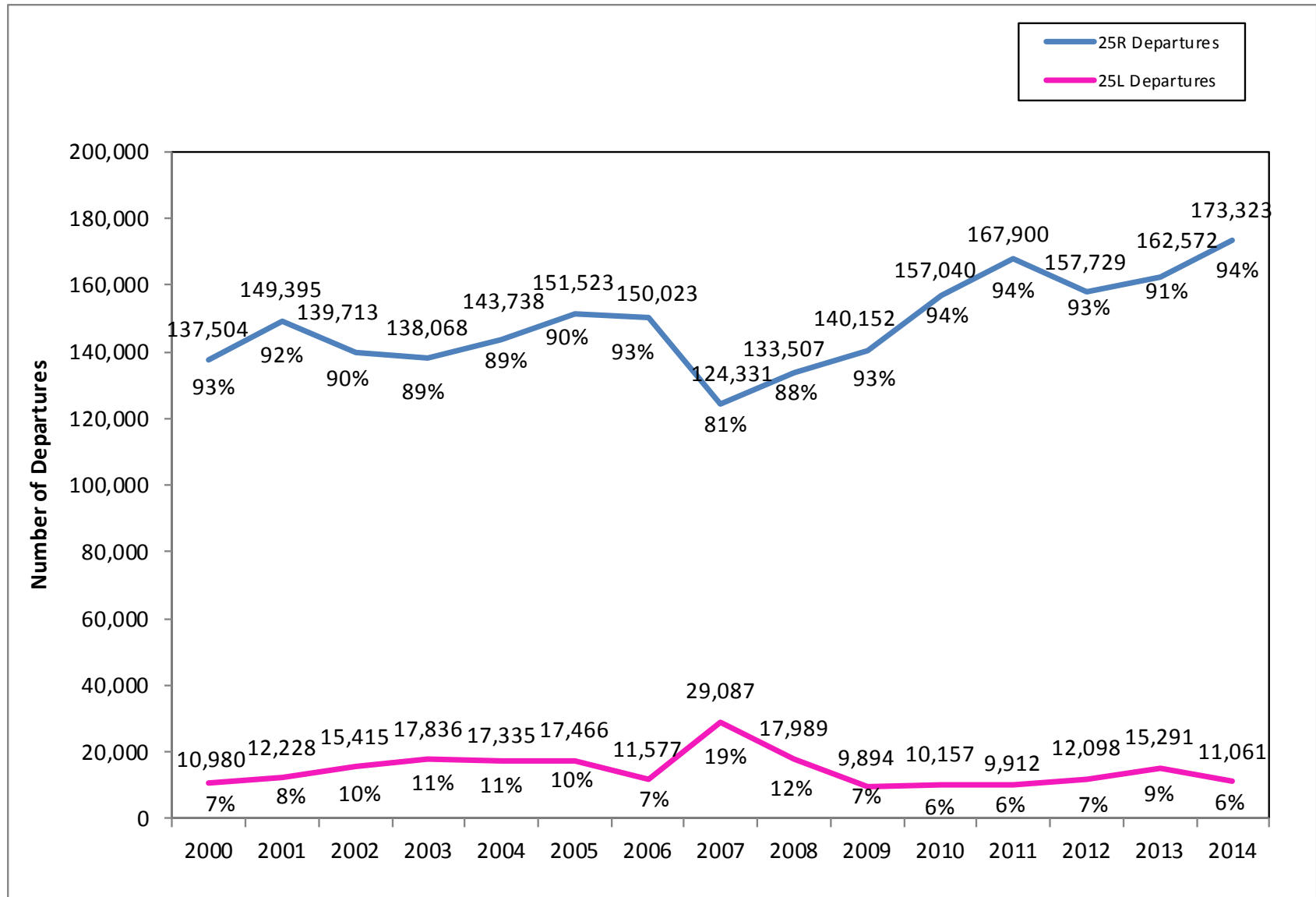
LAX/Community Noise Roundtable

Overview

Statistical information on the following operations:

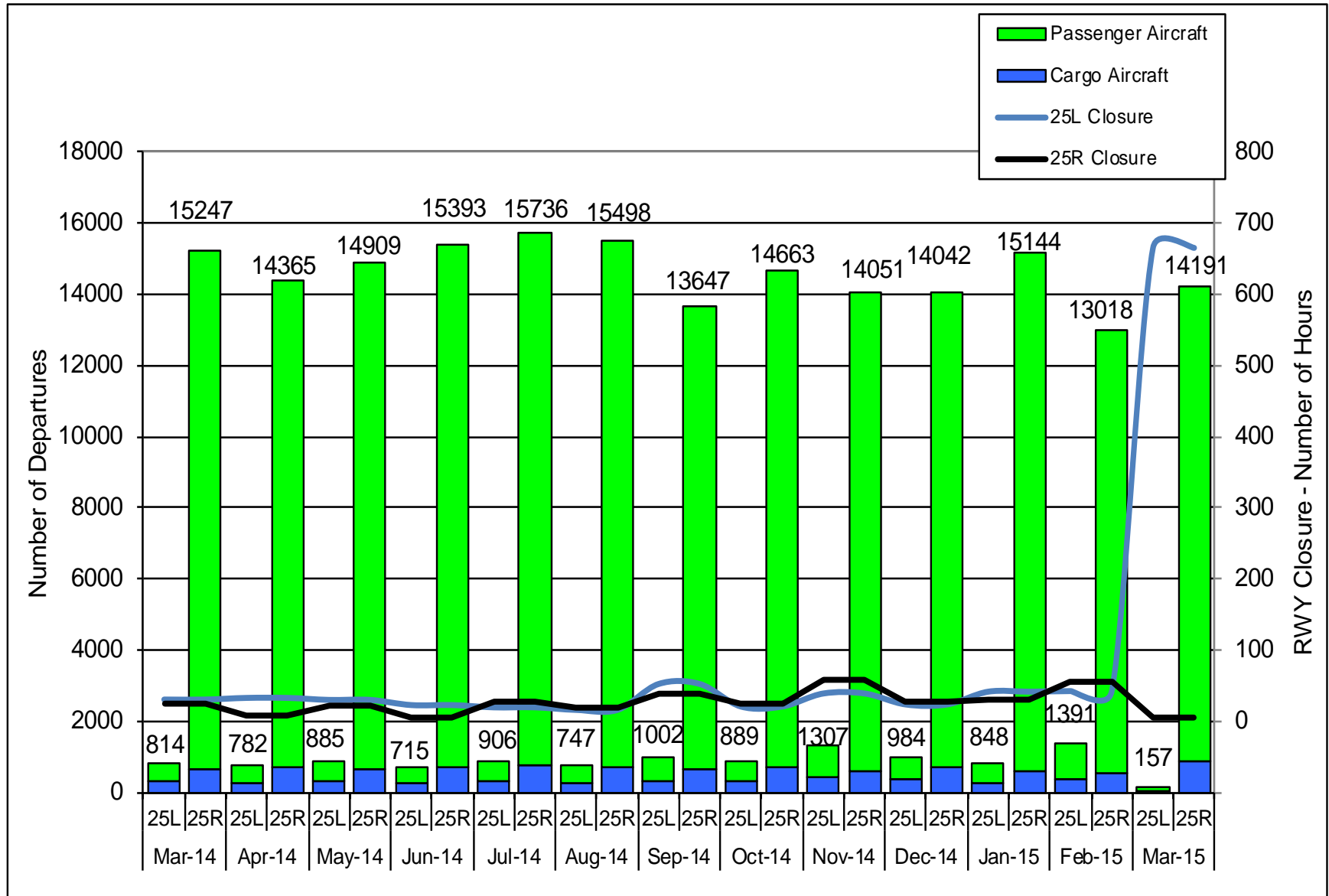
- 25L Departures
- Palos Verdes Overflights

Departures – Runways 25L and 25R Annual Comparison

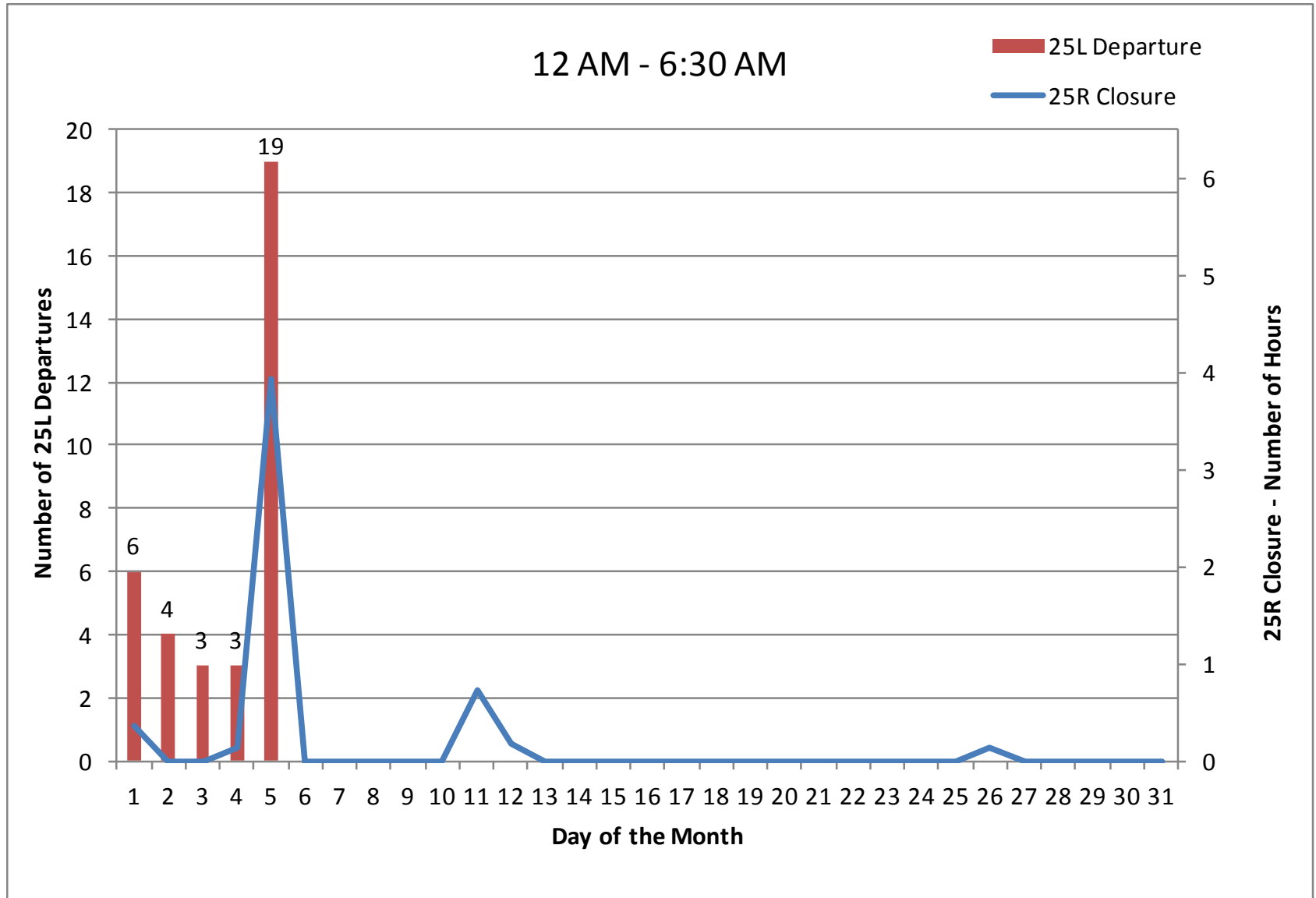


Departures – Runways 25L and 25R

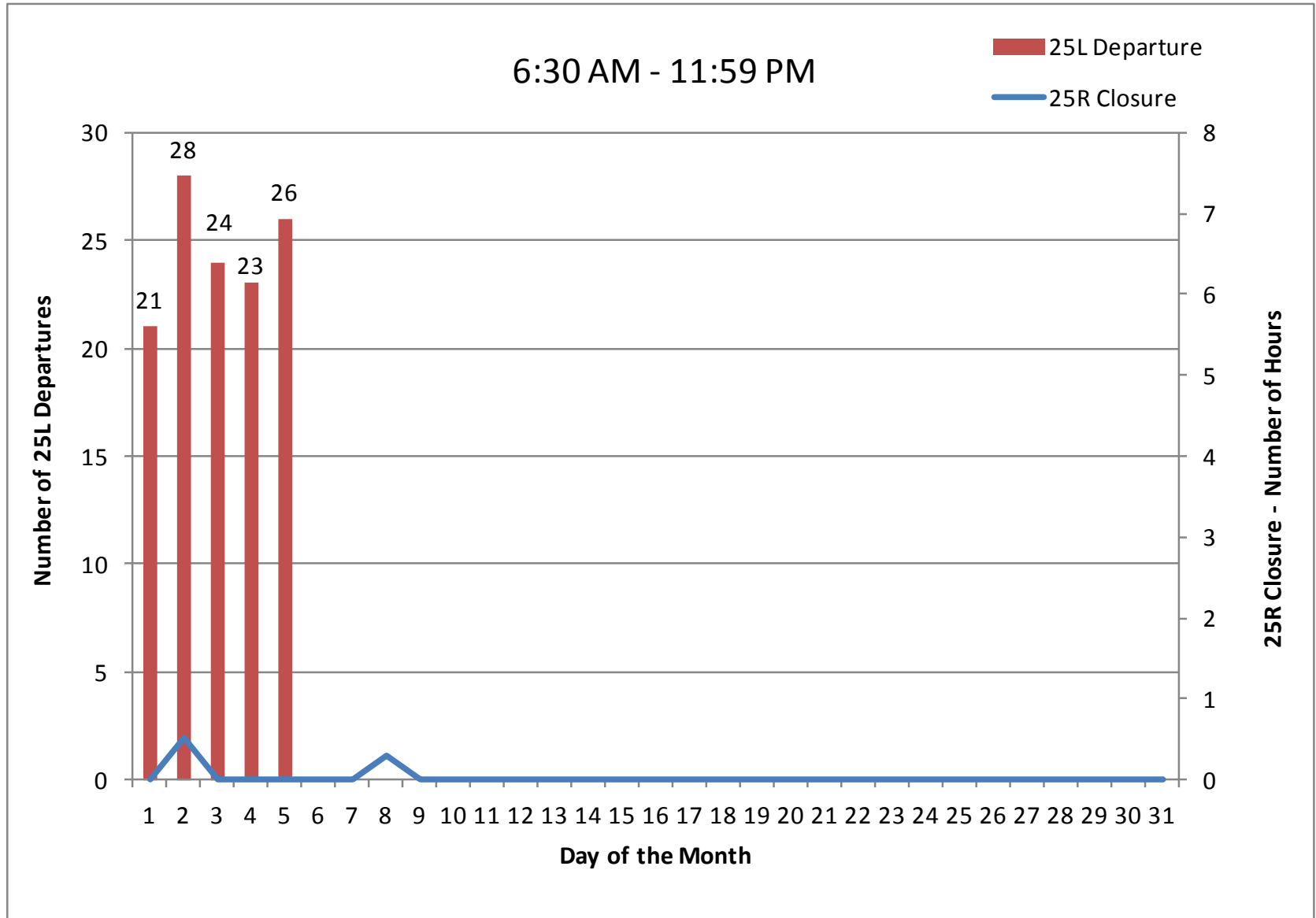
13-month period



25L Departures March 2015

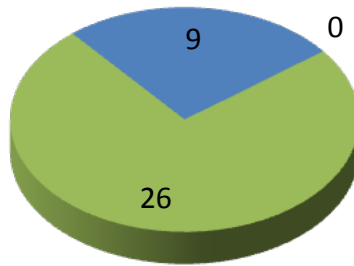


25L Departures March 2015



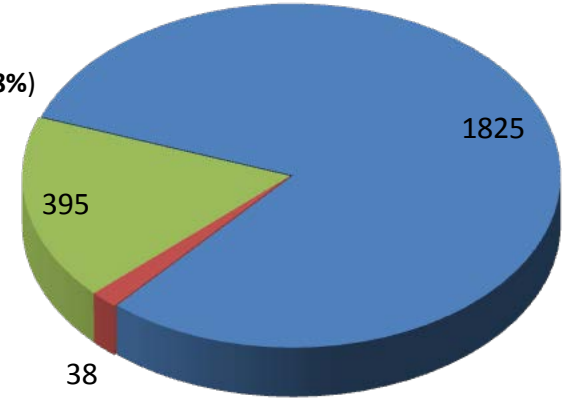
Departures by Operator Type March 2015

25L Departures
12AM - 6:30 AM



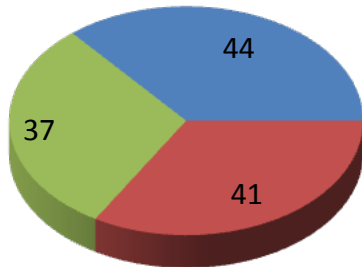
■ PAX - 9
■ GA - 0
■ Cargo - 26
Total: 35 (2%)

25R Departures
12 AM - 6:30 AM



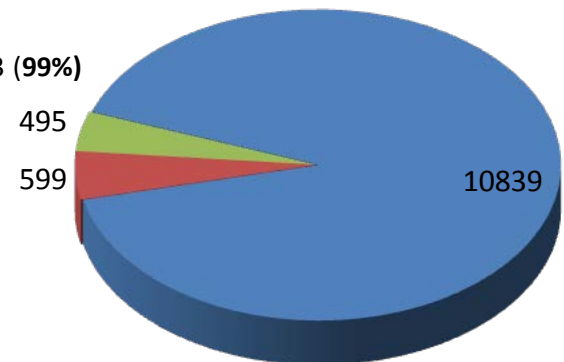
■ PAX - 1825
■ GA - 38
■ Cargo - 395
Total: 2258 (98%)

25L Departures
6:30 AM - 11:59 PM



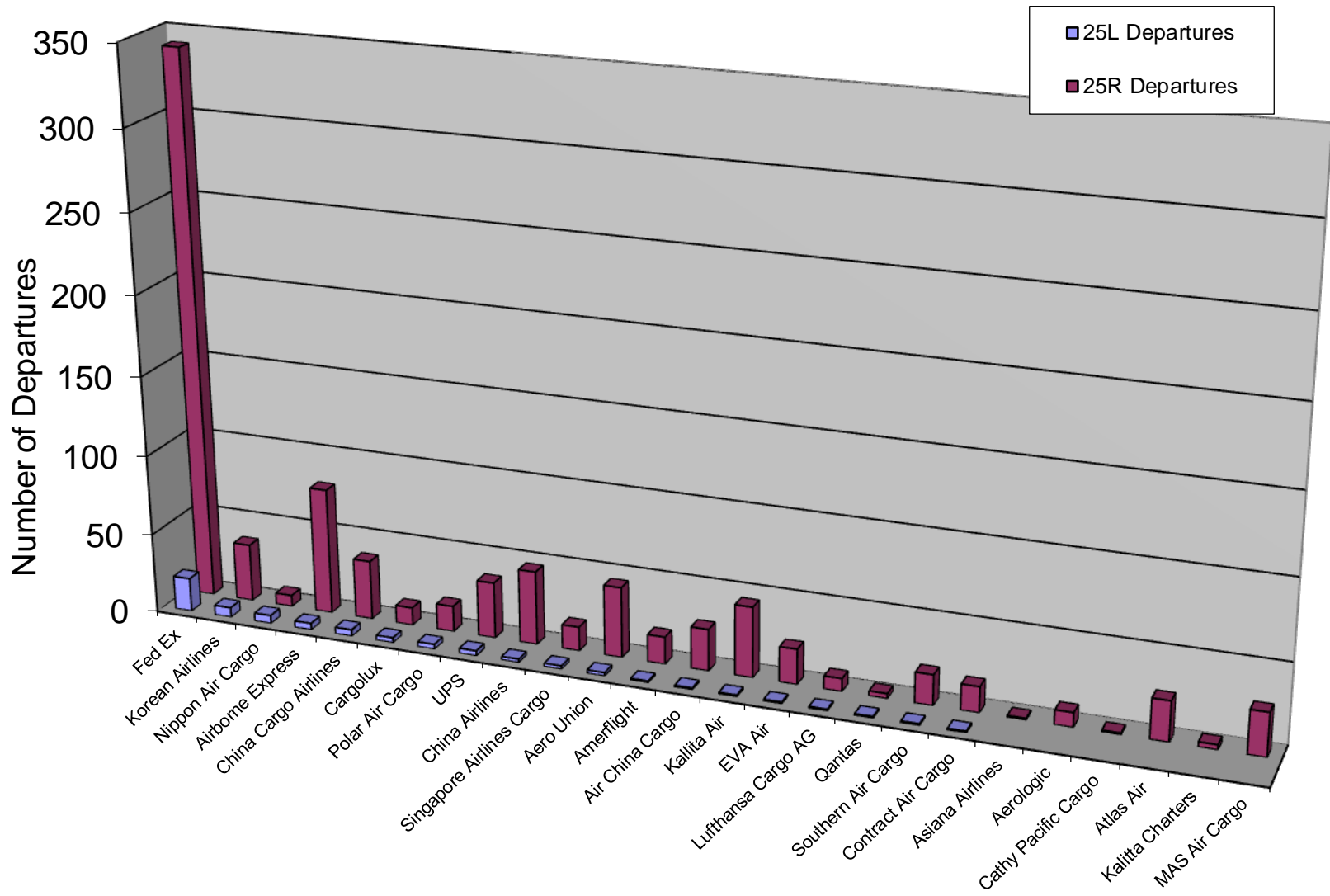
■ PAX - 44
■ GA - 41
■ Cargo - 37
Total: 122 (1%)

25R Departures
6:30 AM - 11:59 PM

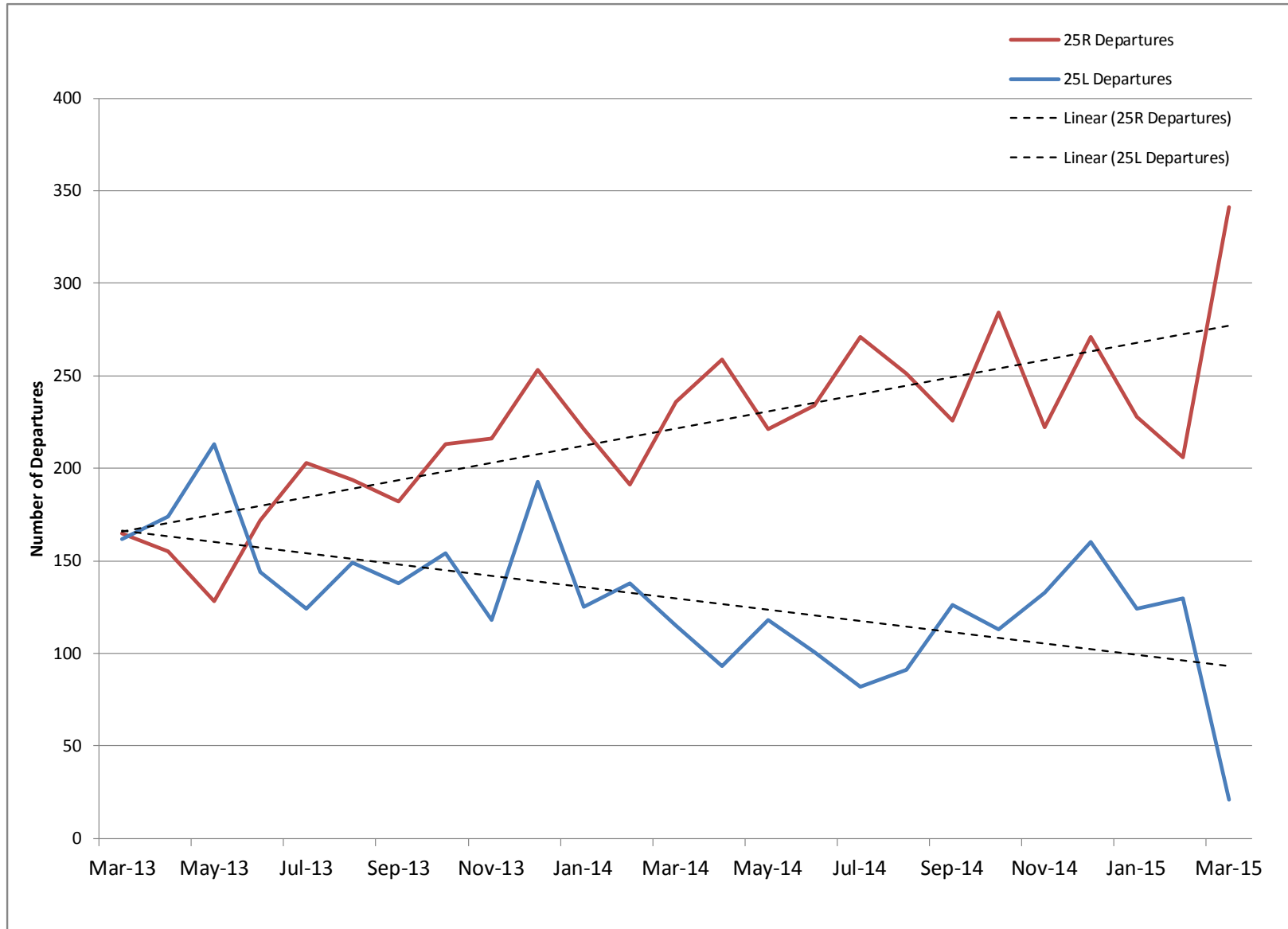


■ PAX - 10839
■ GA - 599
■ Cargo - 495
Total: 11933 (99%)

Cargo Departures on 25L & 25R by Operator March 2015

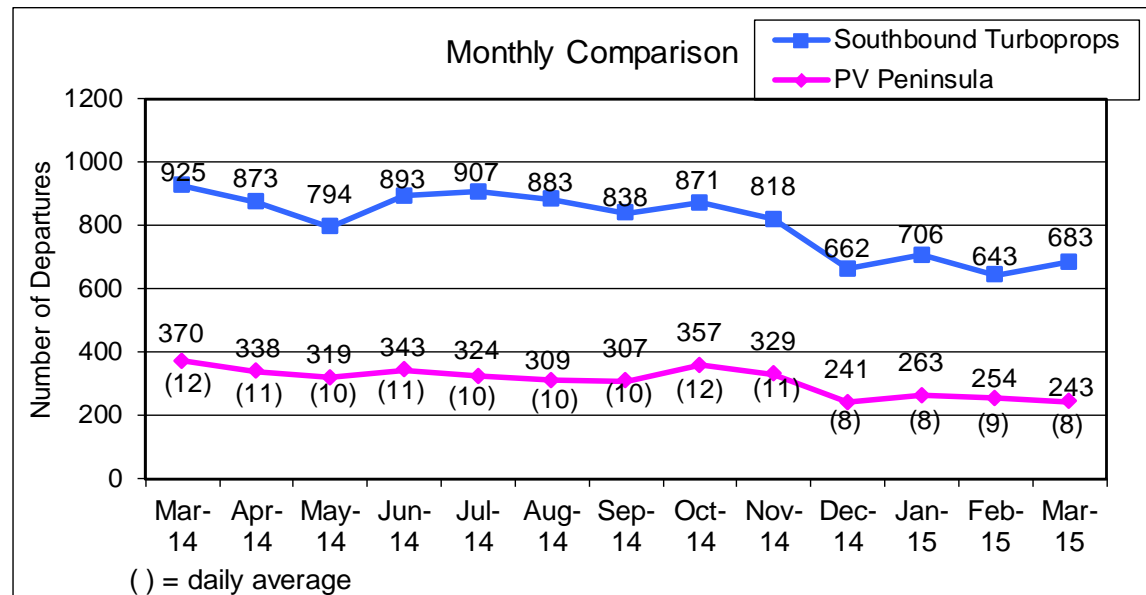
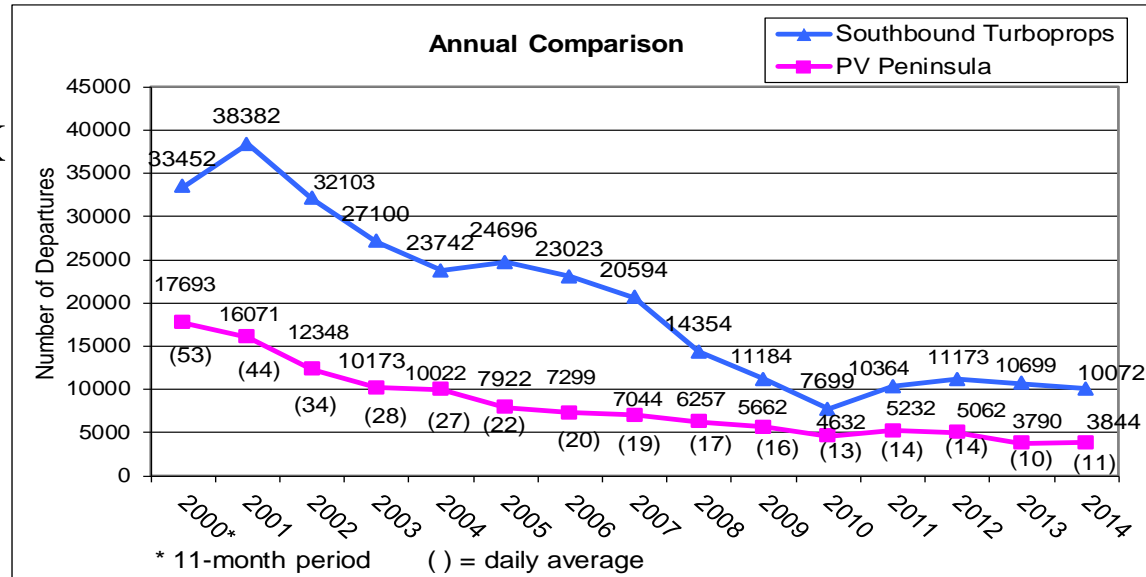
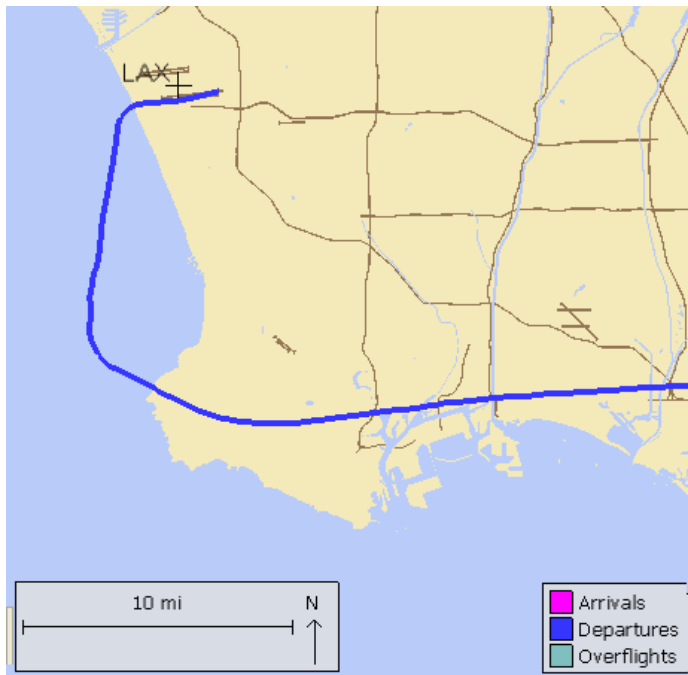


Fed Ex Departures on 25L & 25R Two-Year Period

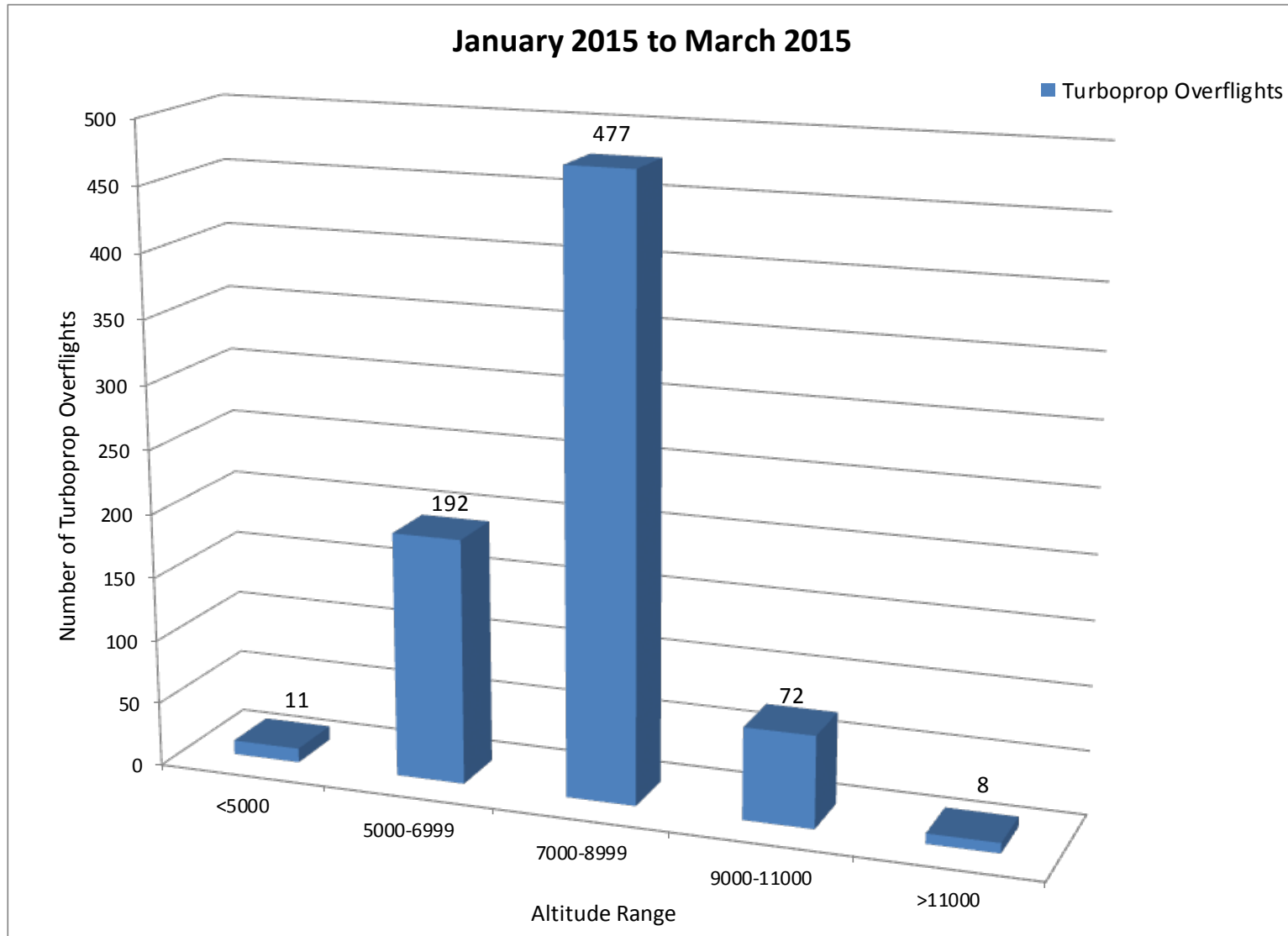


Palos Verdes Peninsula – Turboprop Overflights

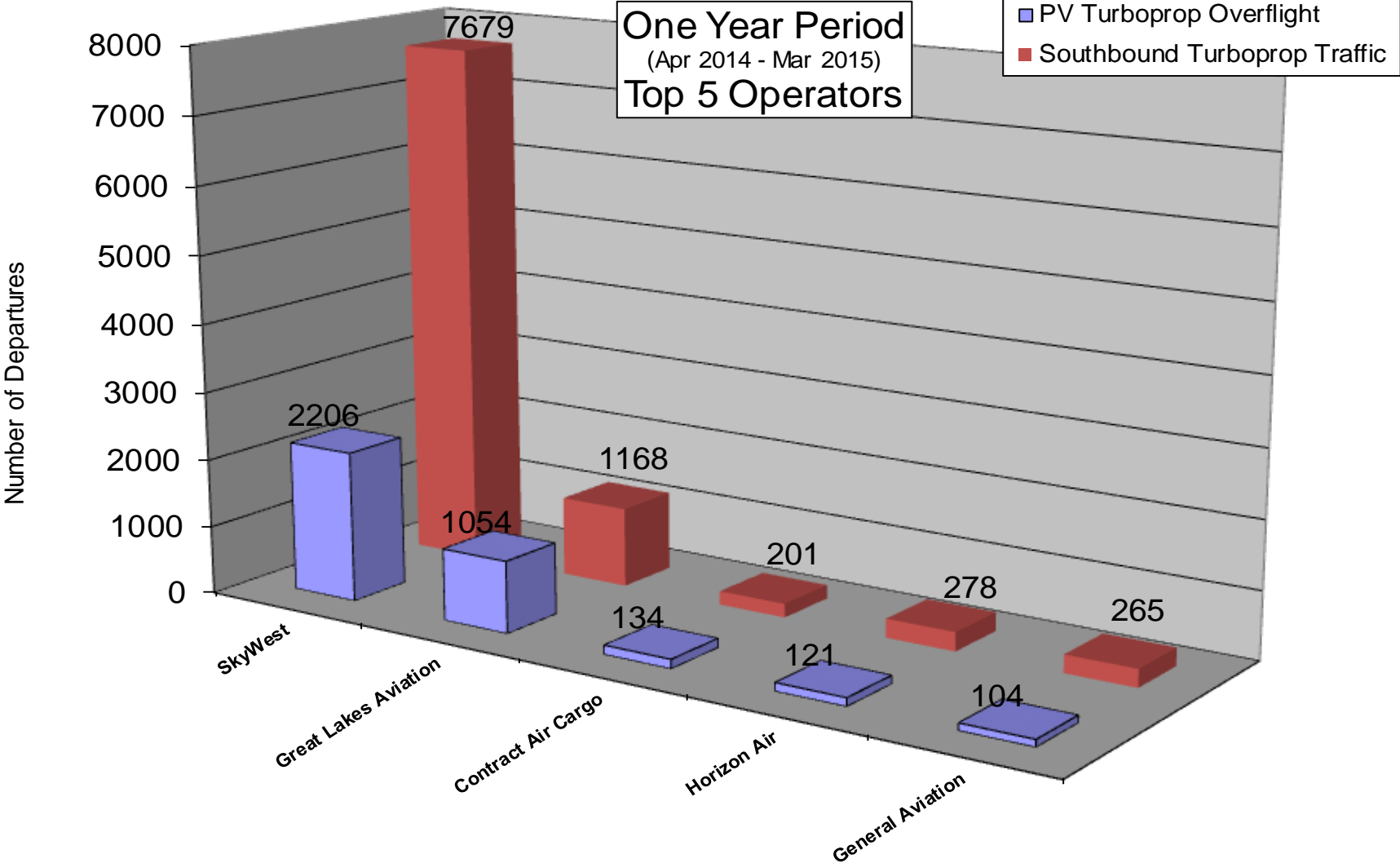
Monitoring southbound turboprops departing from LAX that overfly Peninsula



Turboprop Altitudes over PV

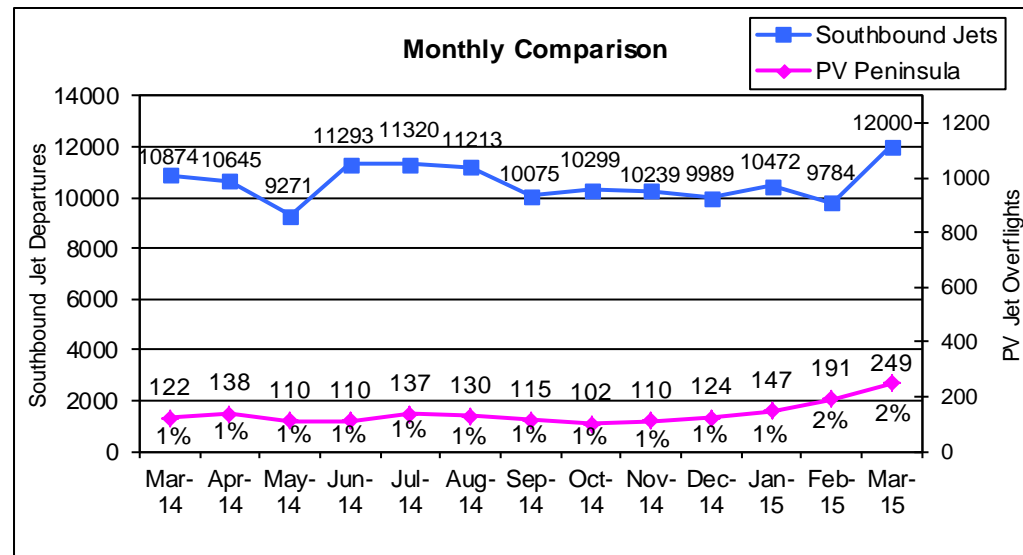
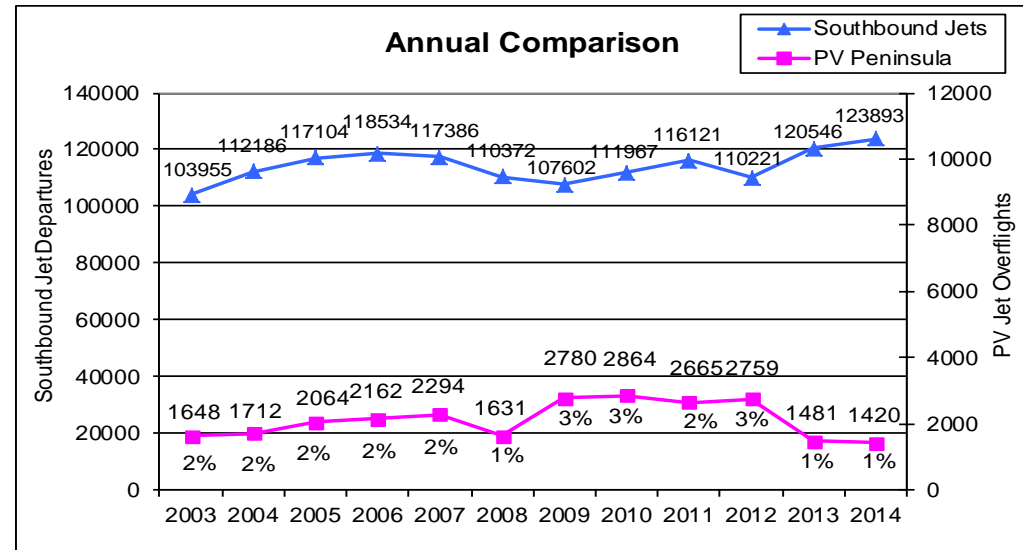
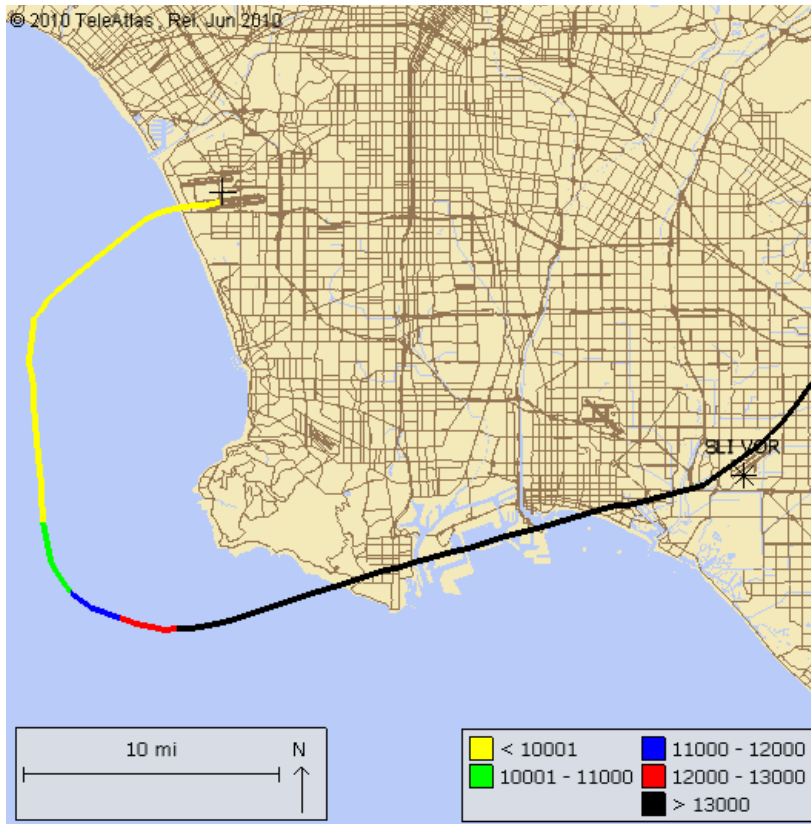


Turboprop Operators



Palos Verdes Peninsula – Jet Overflights

Monitoring southbound jets departing from LAX that overfly Peninsula



Jet Altitudes over PV Peninsula

