



Statistical Update on LAX Aircraft Operations

January 13, 2016

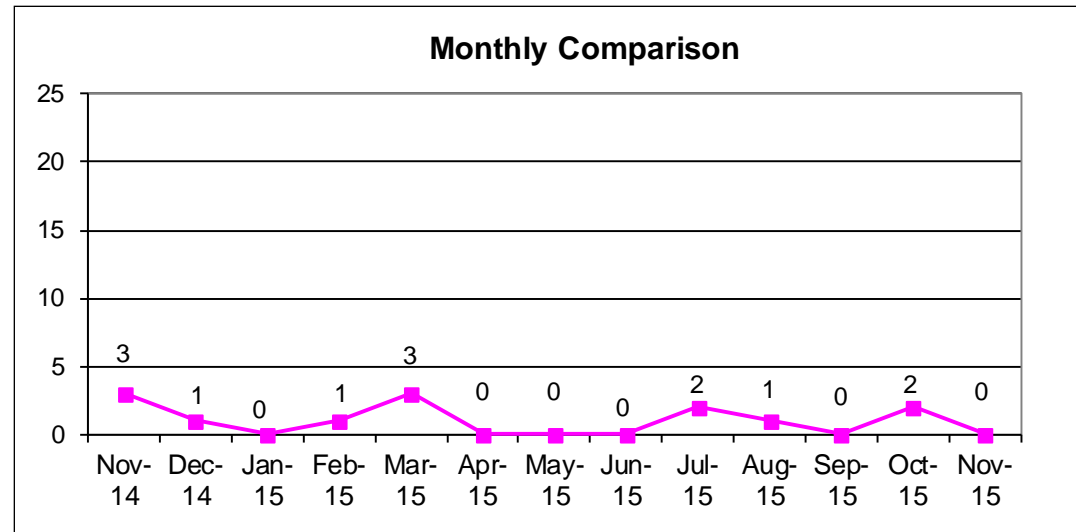
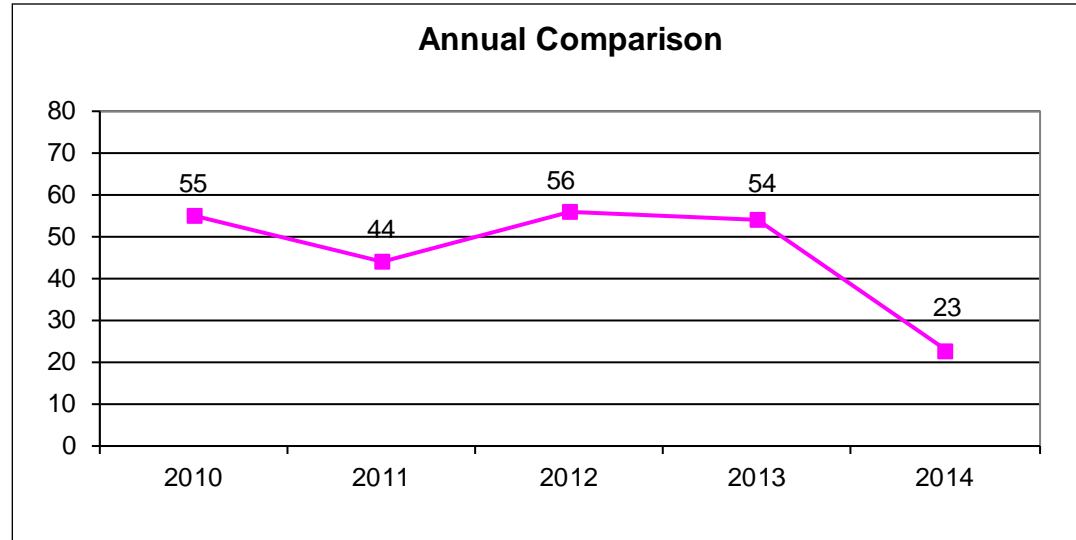
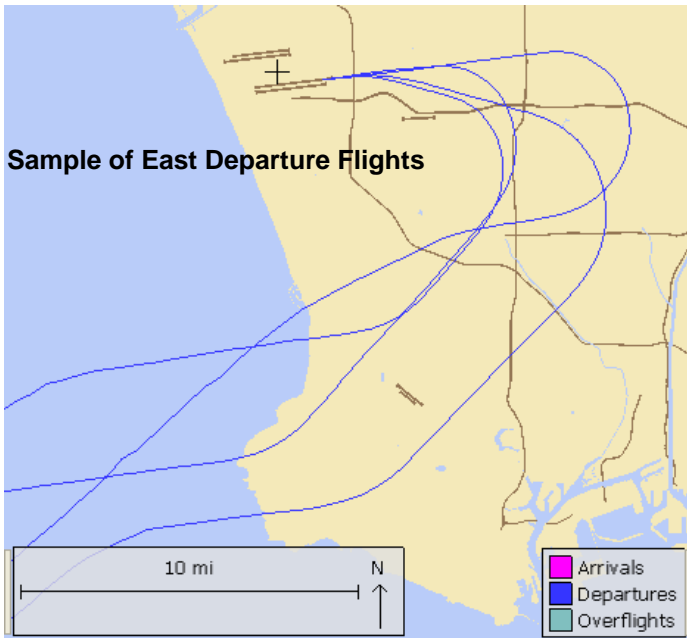
LAX/Community Noise Roundtable

Statistical information on the following operations:

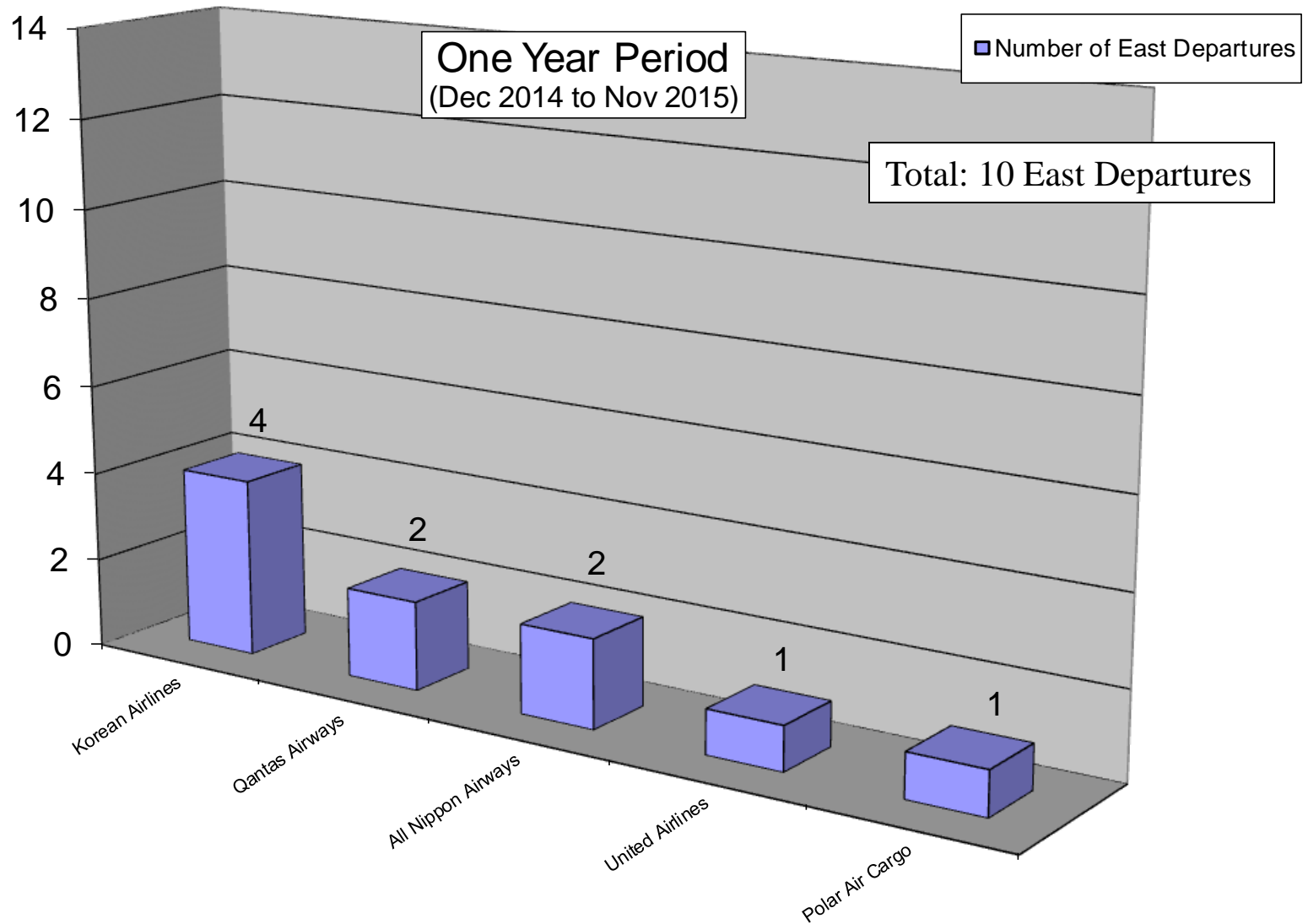
- East Departures
- Early Turns
- Go-arounds

Non-Conforming East Departures Midnight to 6:30 AM

This report shows a summary of aircraft operations departing to the east while the airport is still conducting westerly departures between midnight and 6:30 a.m. These individual easterly departures usually occur when the pilot of a heavy aircraft (e.g. B747s) determines that the tail wind is too great for the weight of the aircraft and requests to depart east into the wind for aircraft safety.

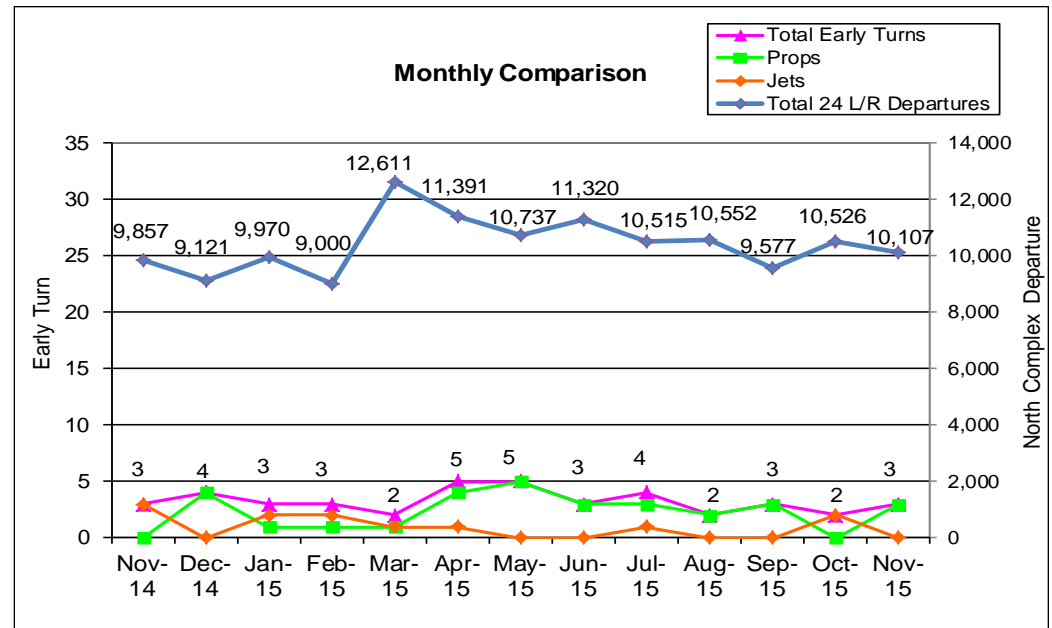
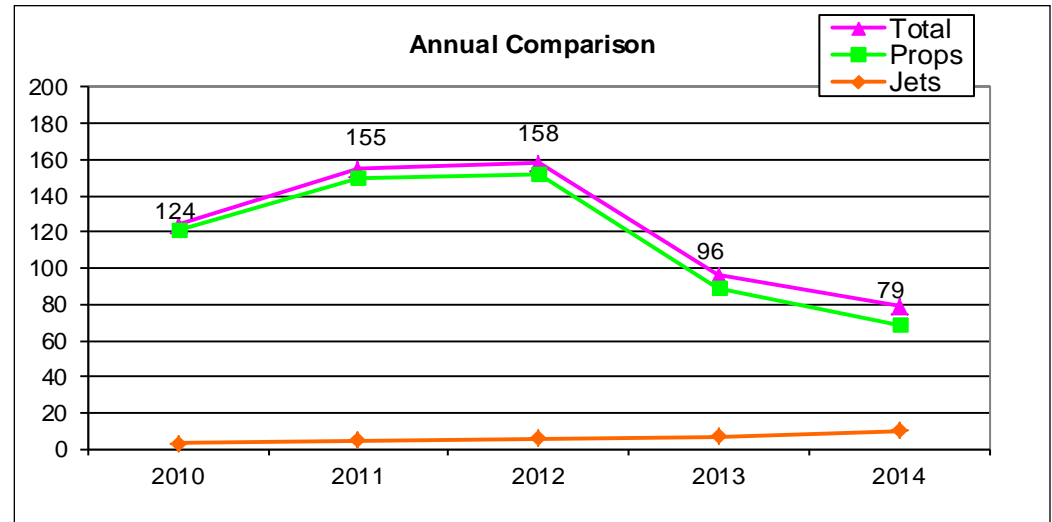
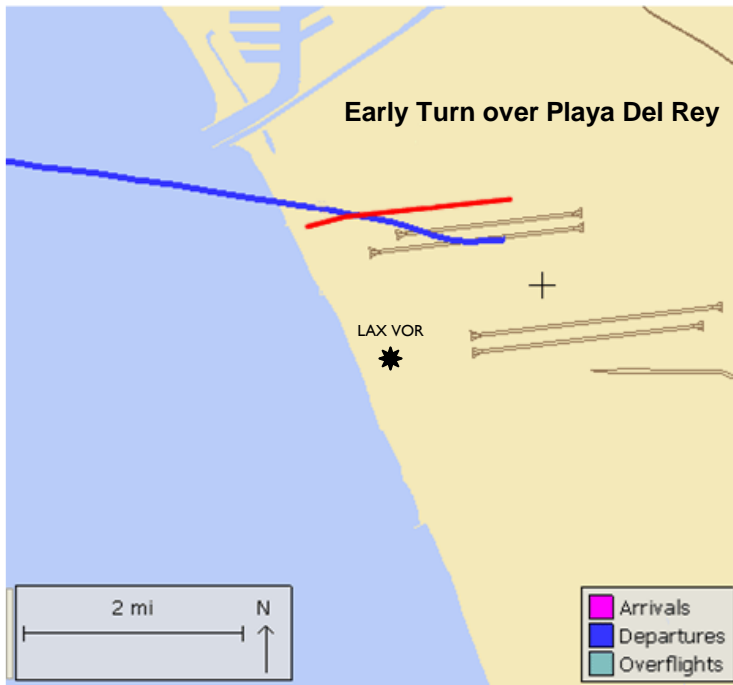


Non-Conforming East Departures by Operator Midnight to 6:30 AM



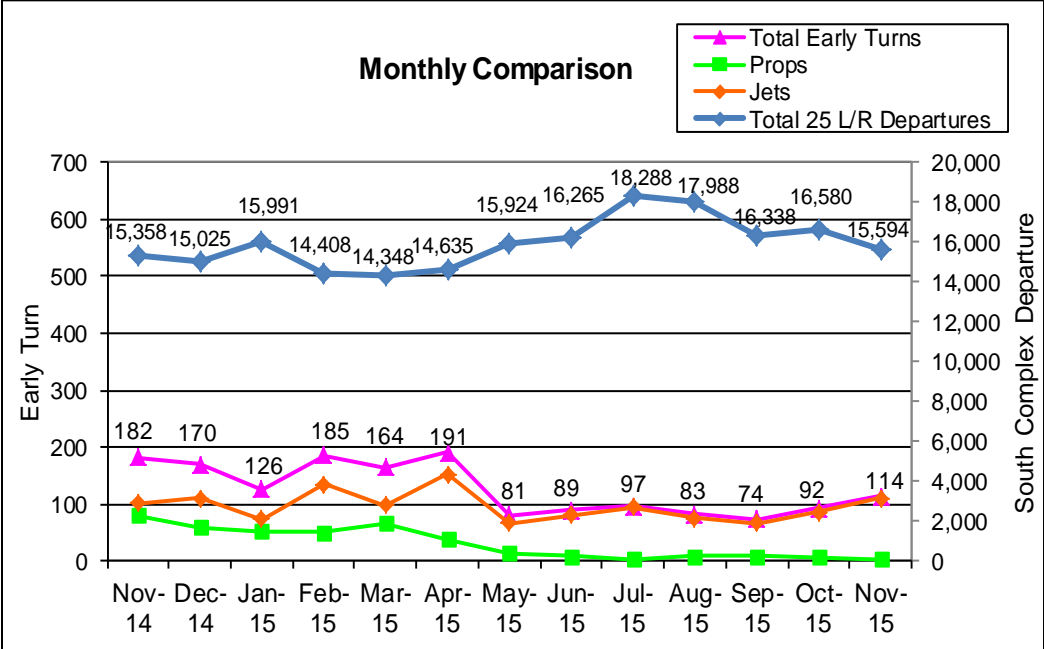
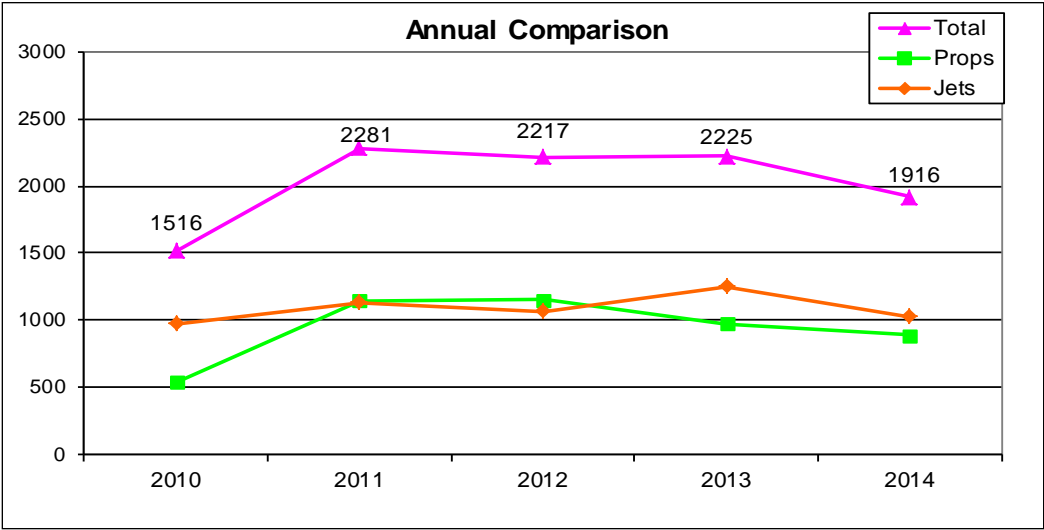
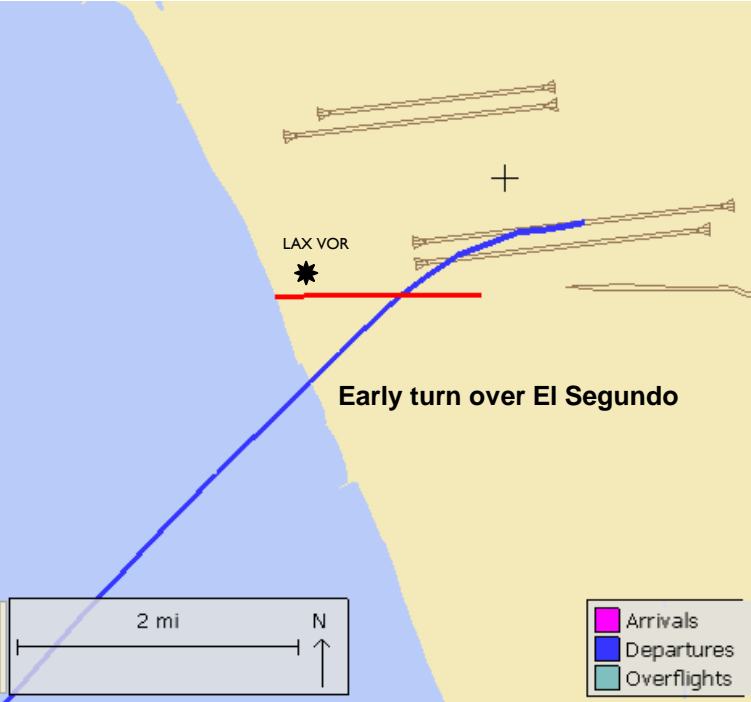
Early Turns to the North

Aircraft departing to the ocean turn early prior to reaching the shoreline

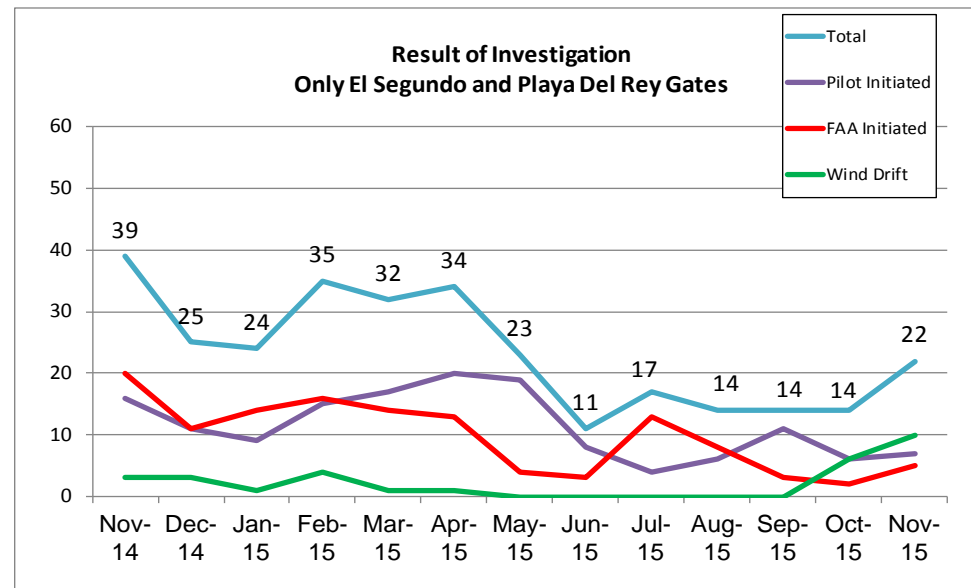
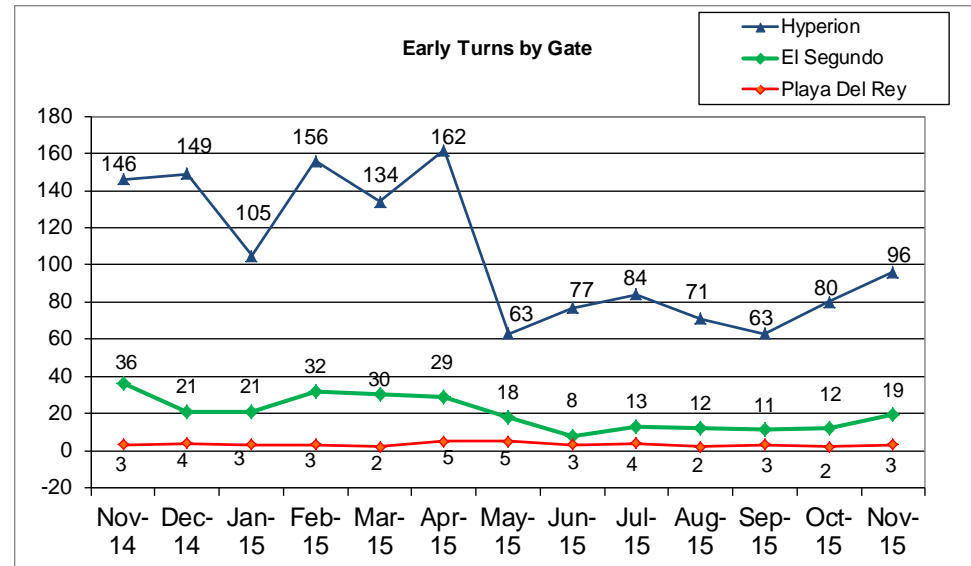
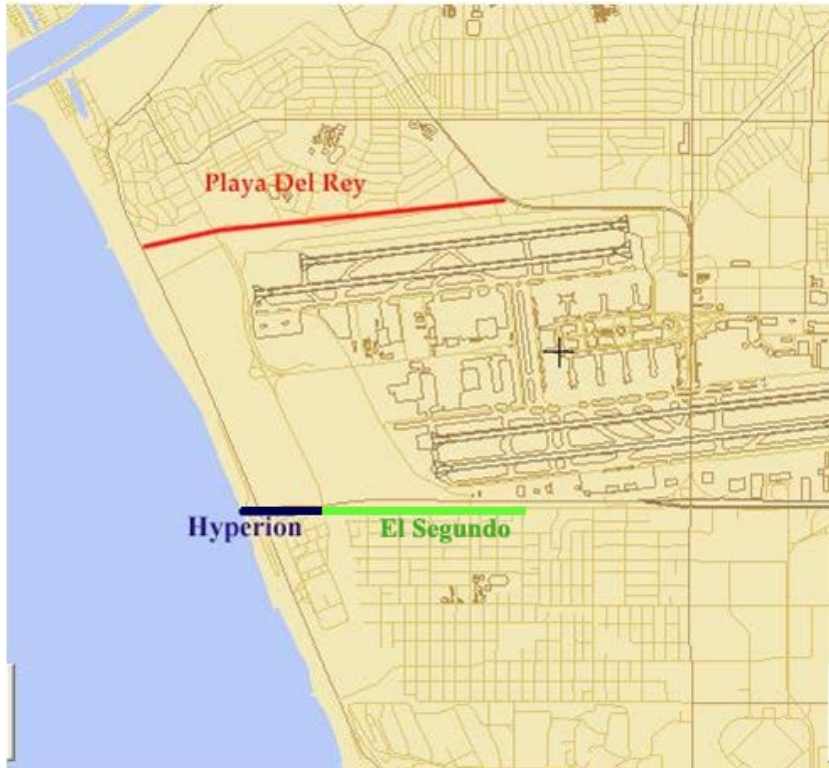


Early Turns to the South

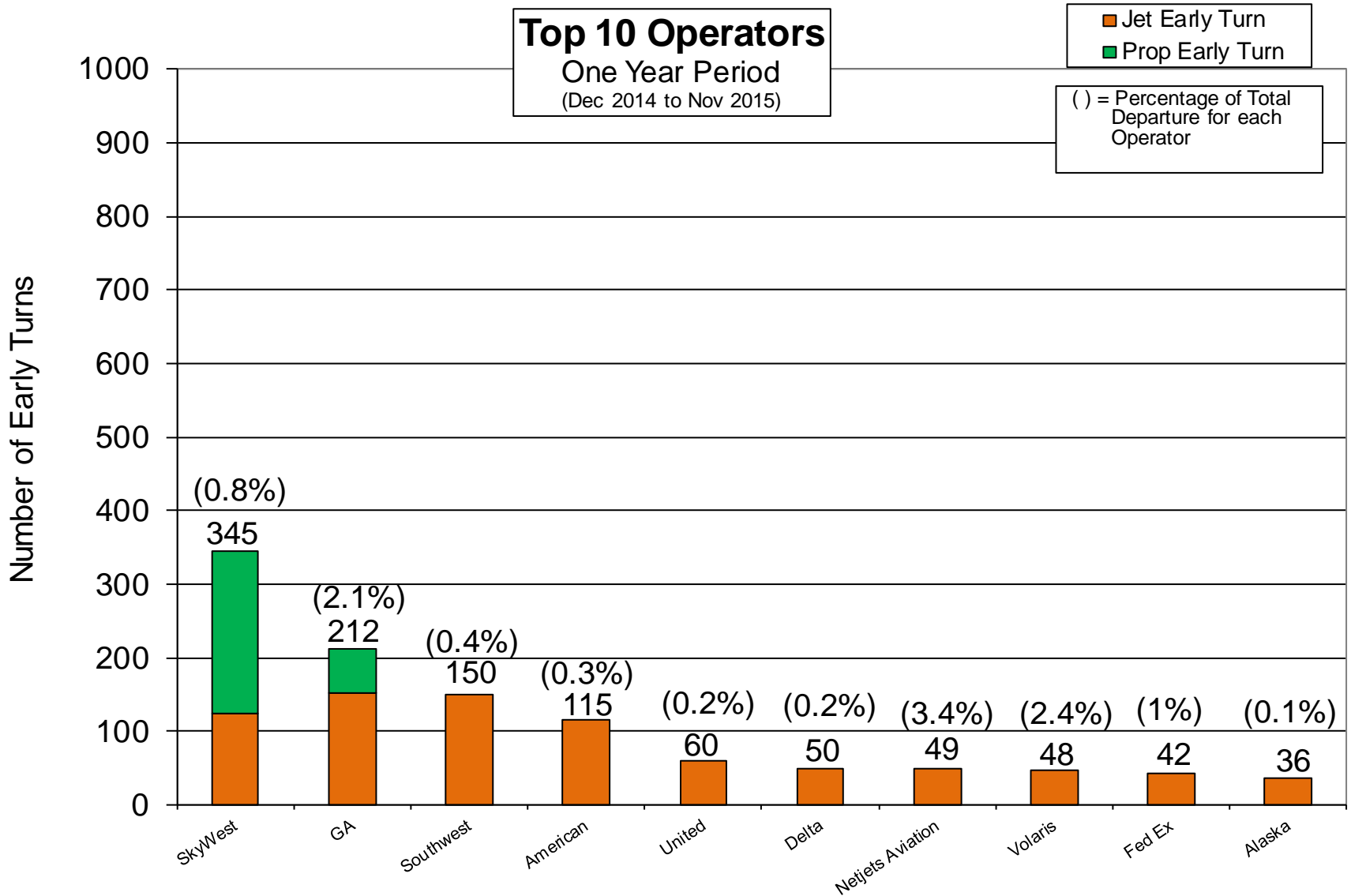
Aircraft departing to the ocean turn early prior to reaching the shoreline



Early Turn Breakdown

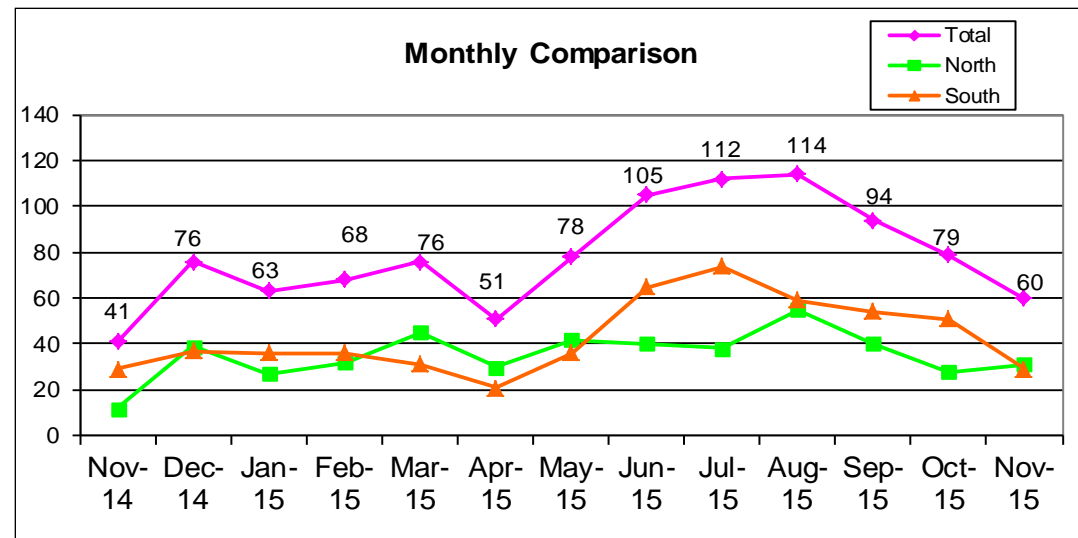
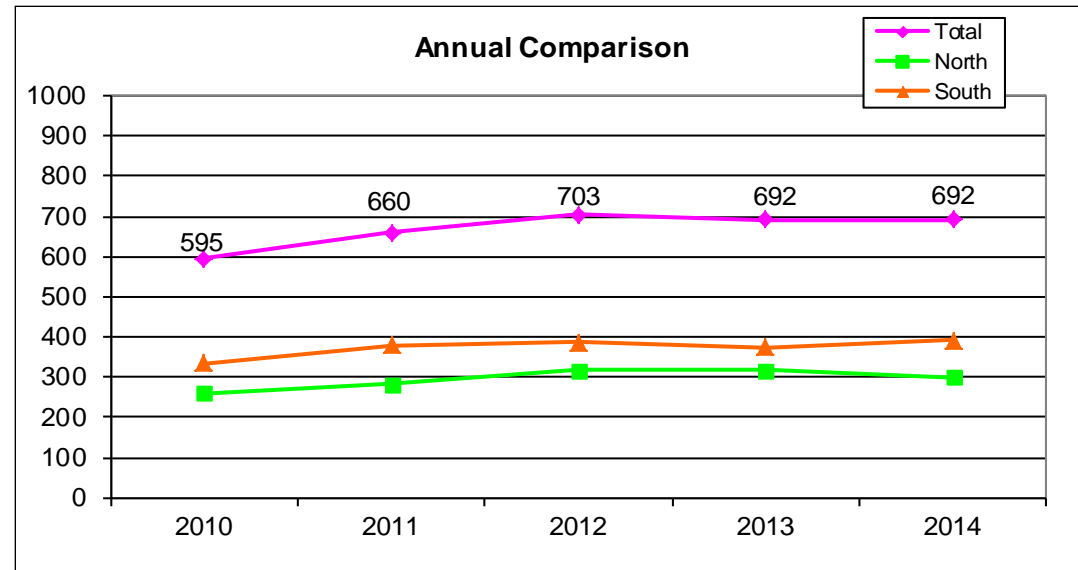
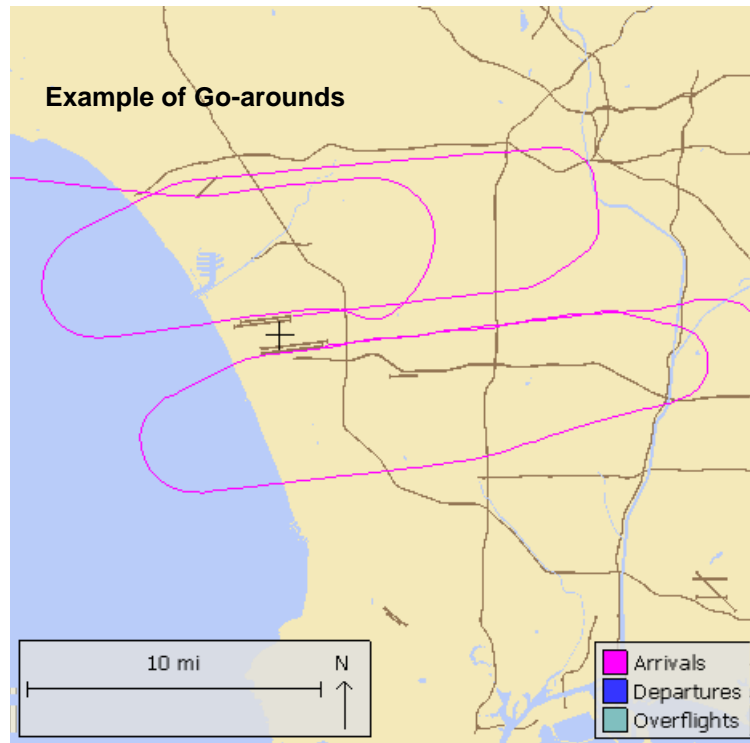


Early Turns by Operator



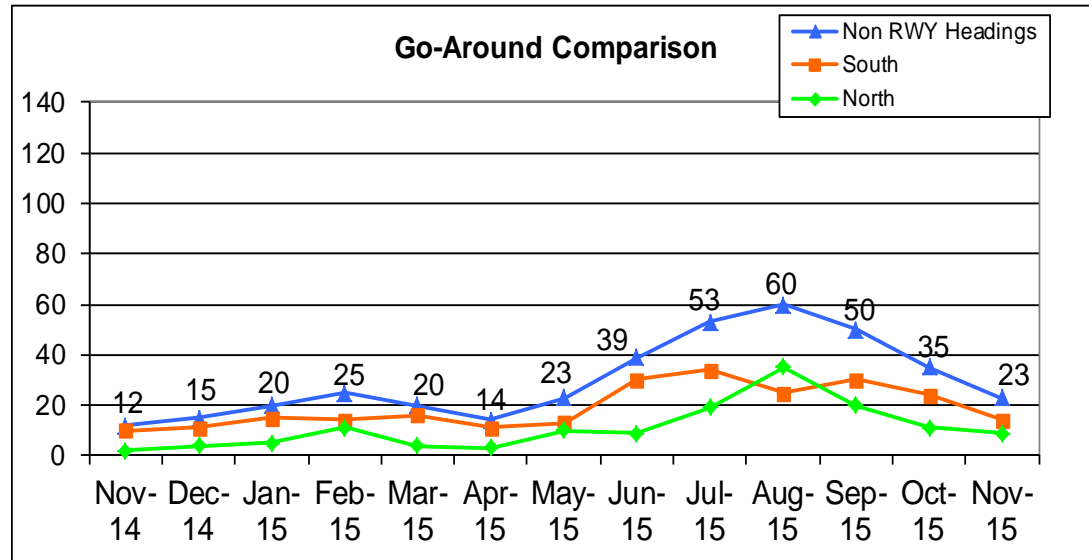
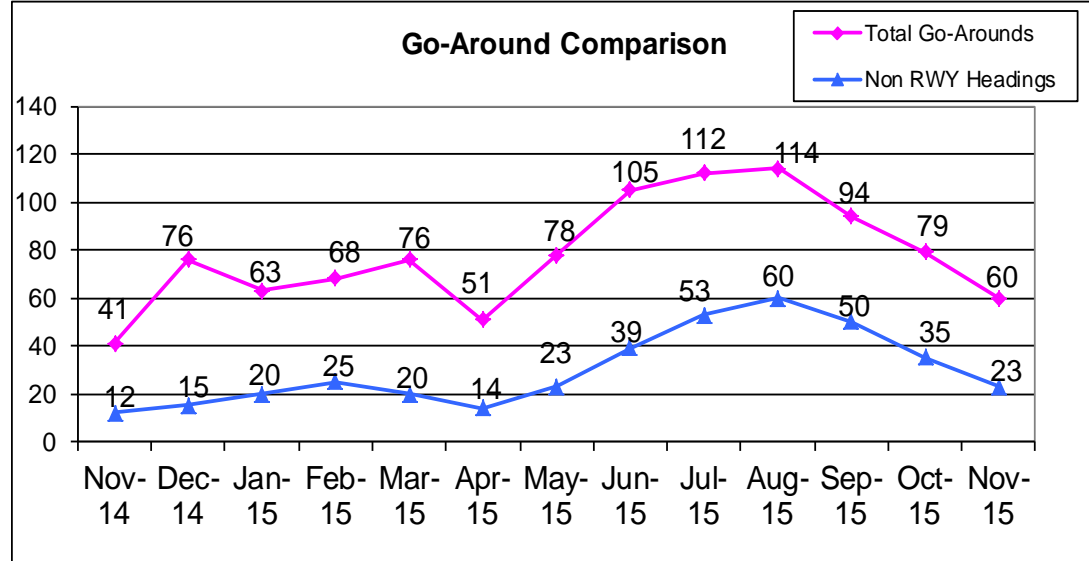
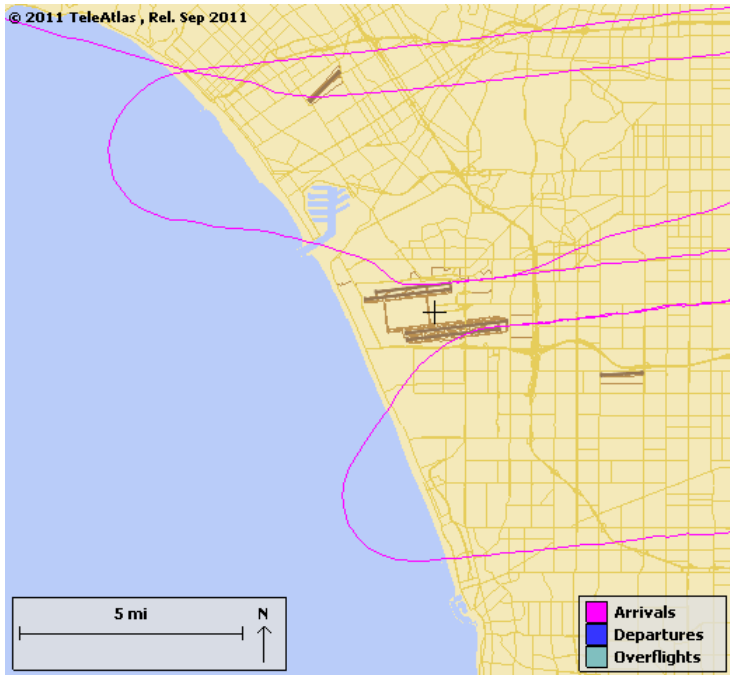
Go-Arounds

Monitoring pilot or ATC initiated go-arounds or missed approaches



Go-Arounds – Not Maintaining RWY Headings

Example of Go-Arounds not maintaining runway headings



Note: Numbers from January 2015 to May 2015 have been revised to reflect *go-arounds not maintaining runway headings* more accurately.

Reasons for Go-Arounds

		May 2015	Aug 2015
Pilot Initiated		35	45
	Too high or too fast	19	34
	Weather	9	1
	Aircraft Equipment (flaps, gears, avionics)	4	2
	Overtake on Final/ Wake Turbulence	1	2
	Other	0	4
	Unknown	2	2
Controller Initiated		38	66
	Departure Traffic on Runway	3	39
	Previous Arrival Traffic on Runway	8	11
	In-trail Spacing	25	11
	Runway Crossing Traffic	2	4
	Other	0	1
Unknown		5	3
Total		78	114

Go-Arounds – By Operator

