



Statistical Update on Aircraft Operations

May 11, 2016

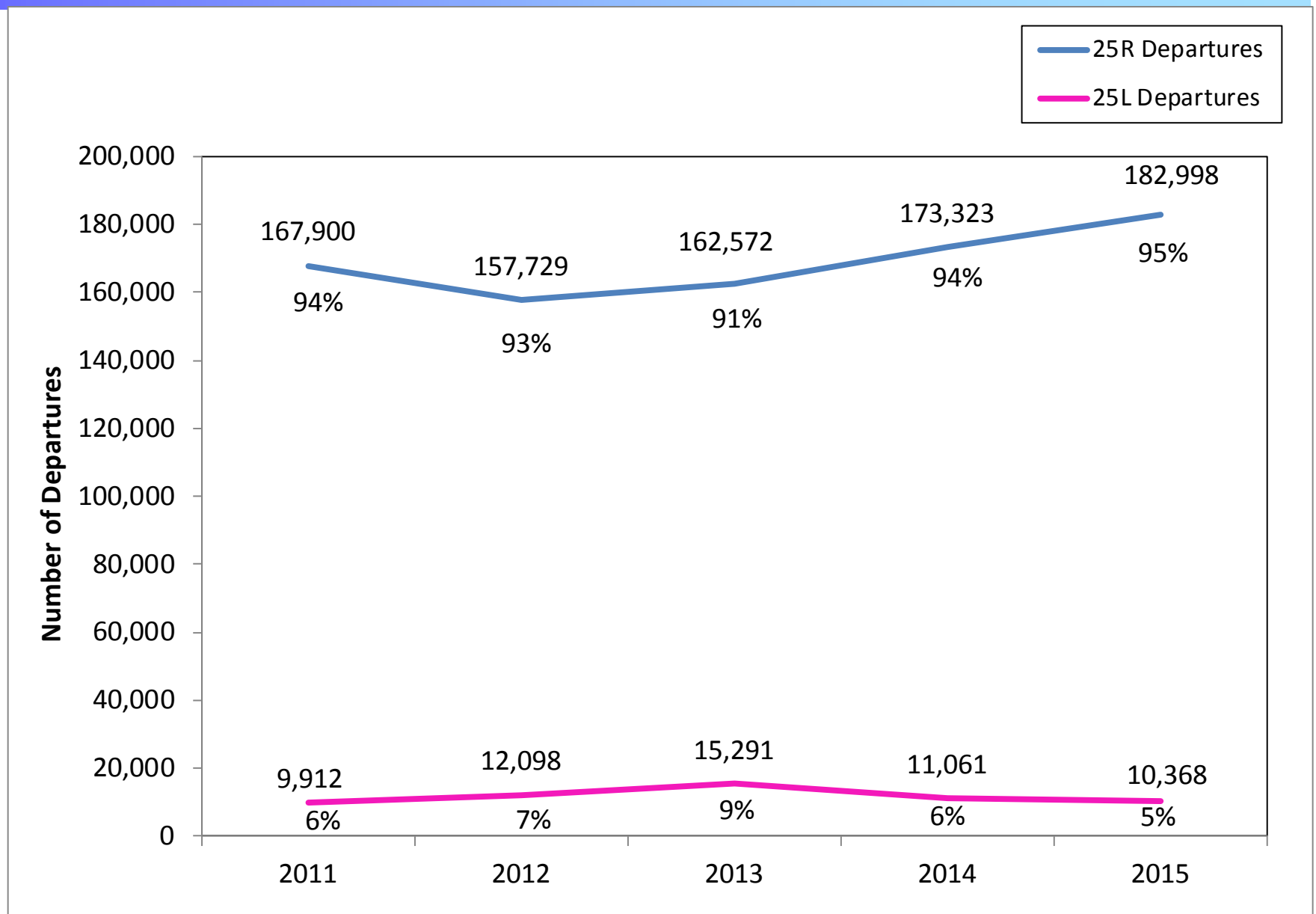
LAX/Community Noise Roundtable

Overview

Statistical information on the following operations:

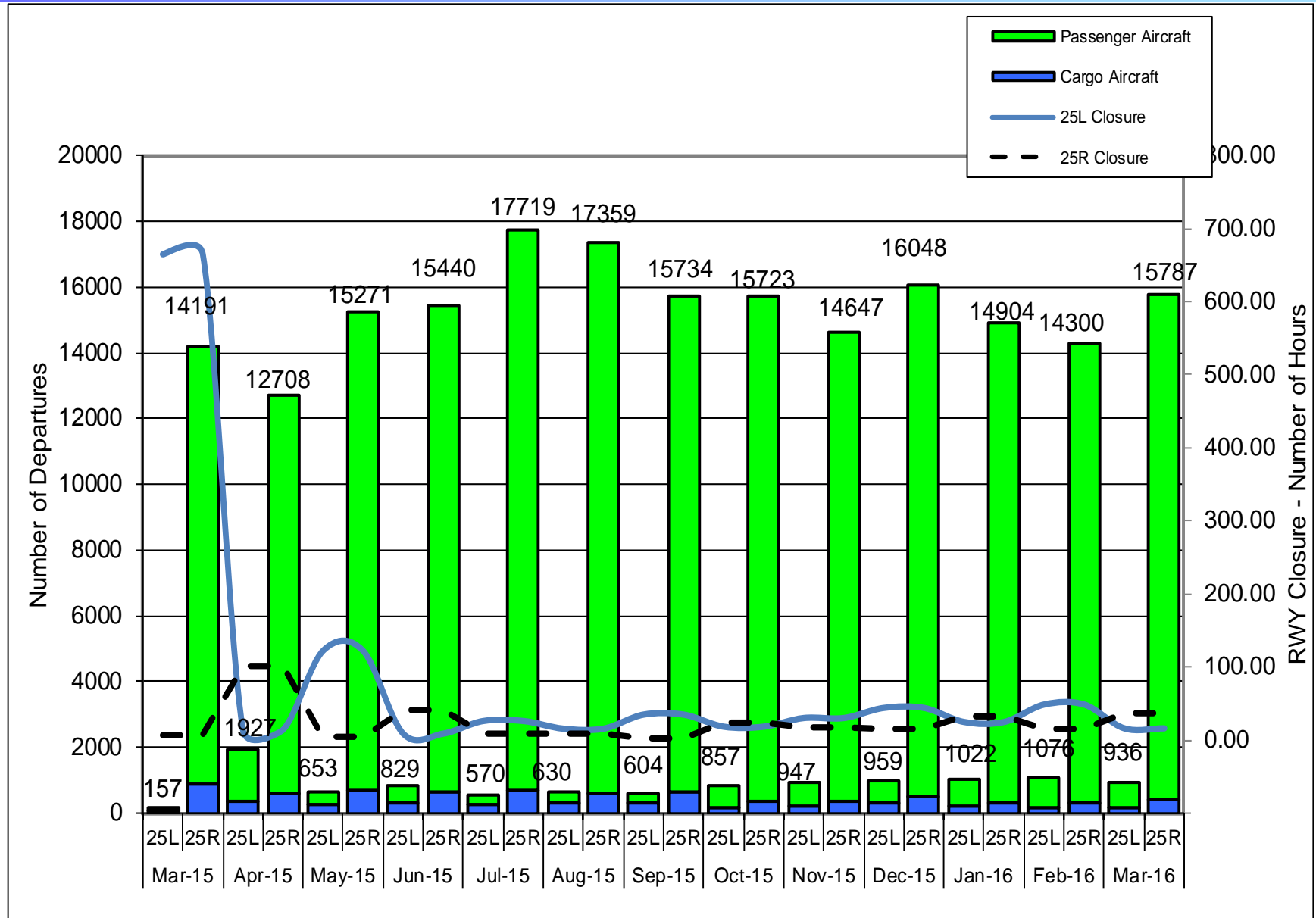
- 25L Departures
- Palos Verdes Overflights

Departures – Runways 25L and 25R Annual Comparison

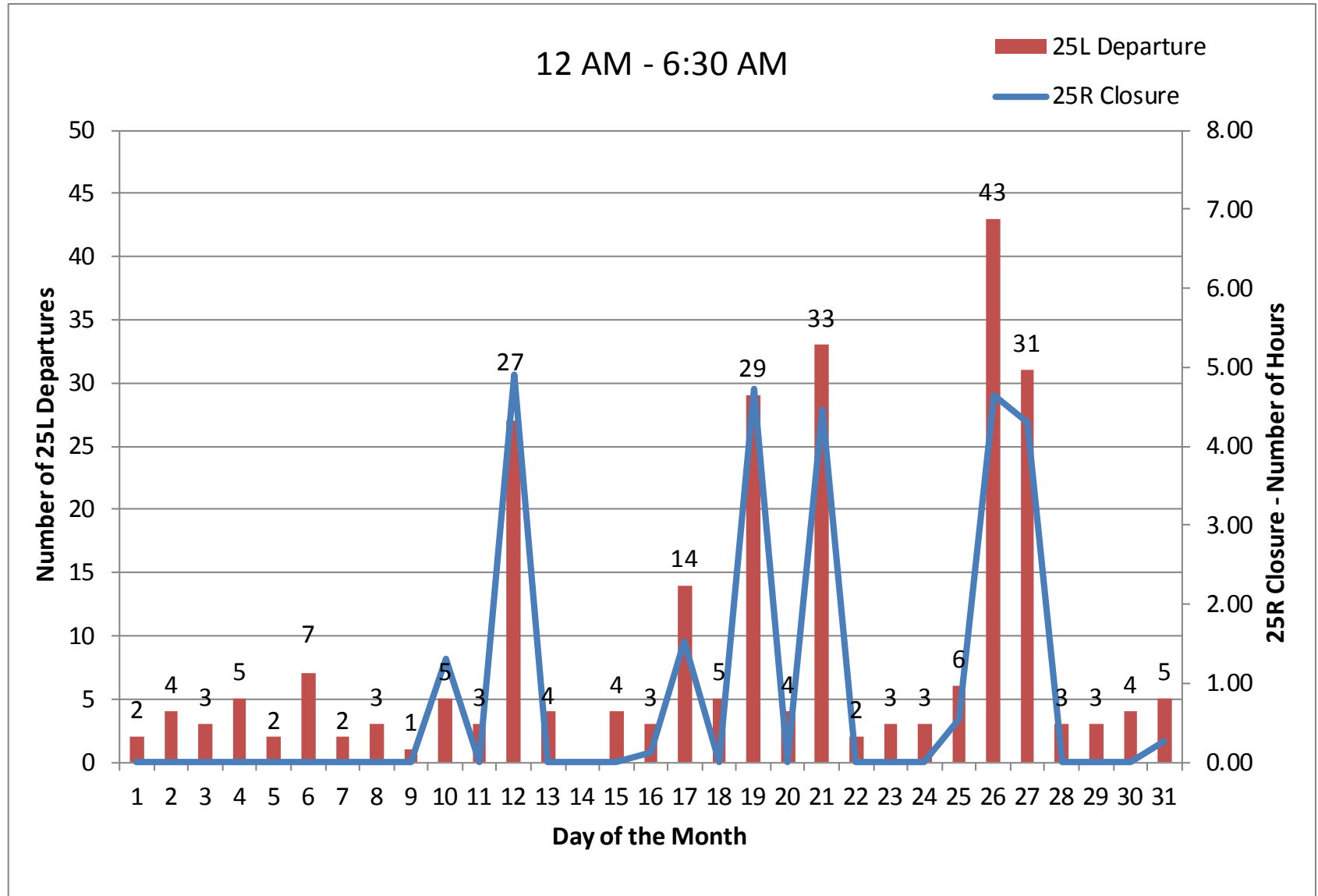


Departures – Runways 25L and 25R

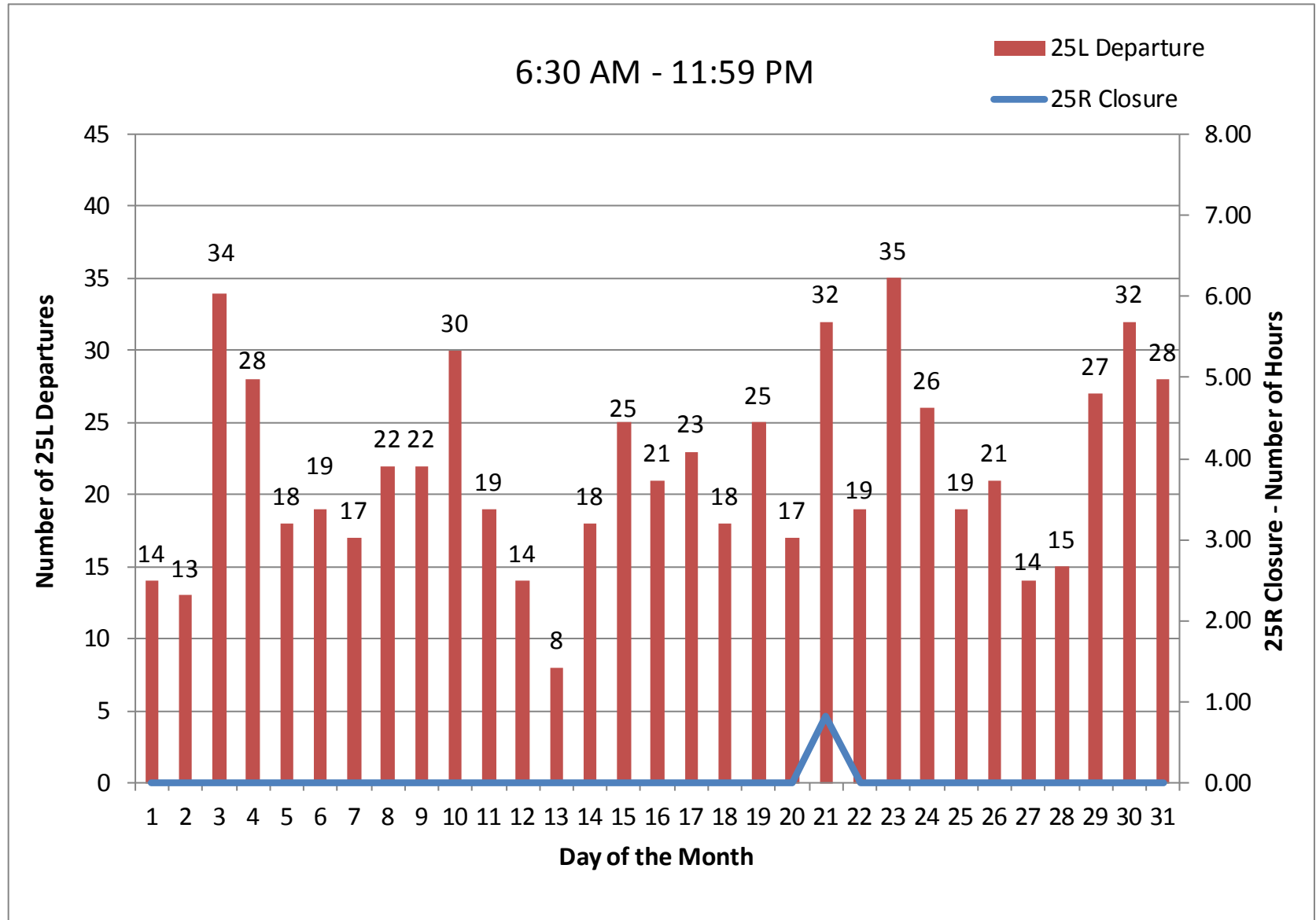
13-month period



25L Departures March 2016



25L Departures March 2016



Departures by Aircraft Category

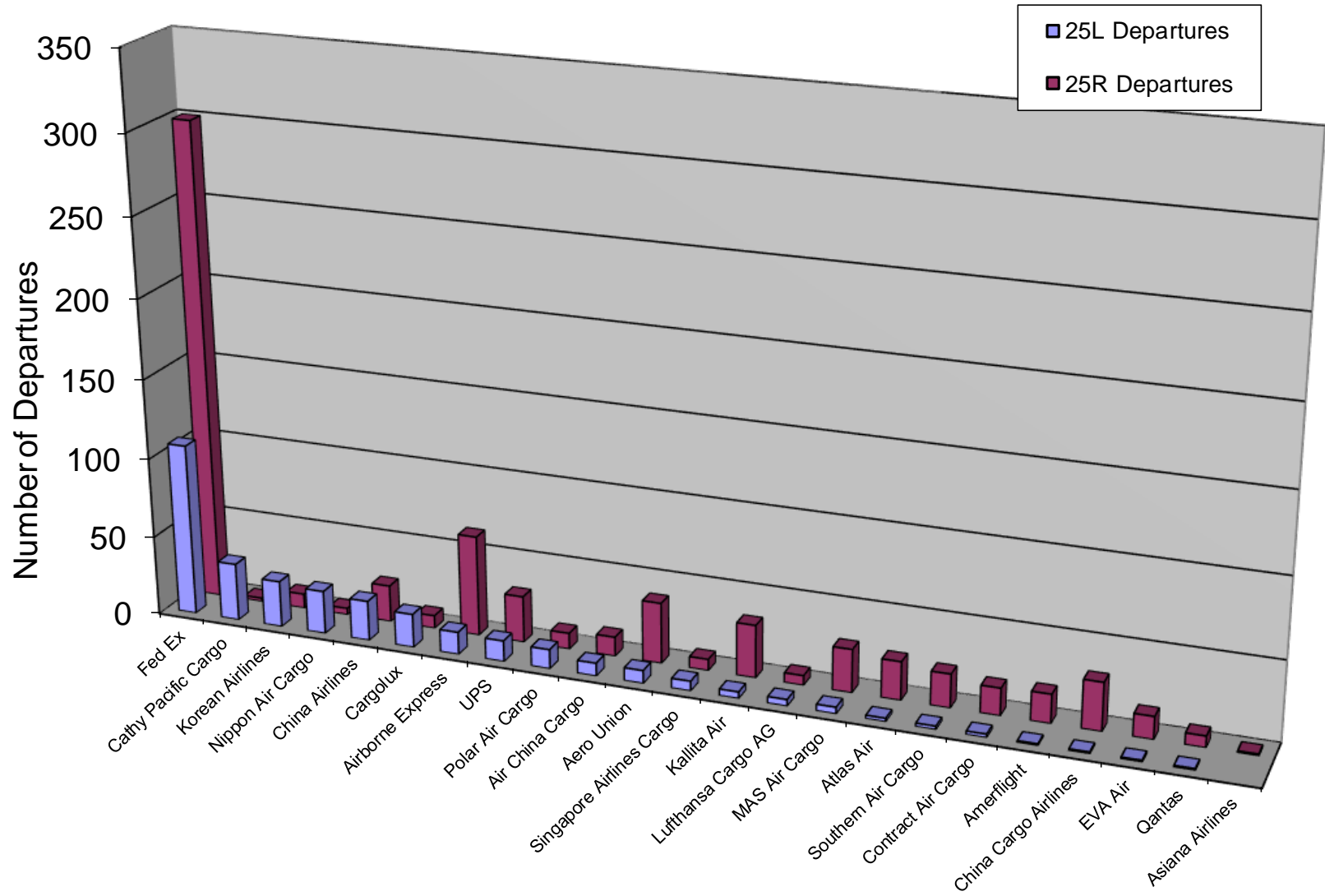
March 2016

6:30 AM - 11:59 PM			
<i>Aircraft Category</i>	<i>25L Departures</i>	<i>25R Departures</i>	<i>Total</i>
Passenger	2%	98%	12946
General Aviation	31%	69%	711
Cargo	38%	62%	576
Total	5%	95%	14233

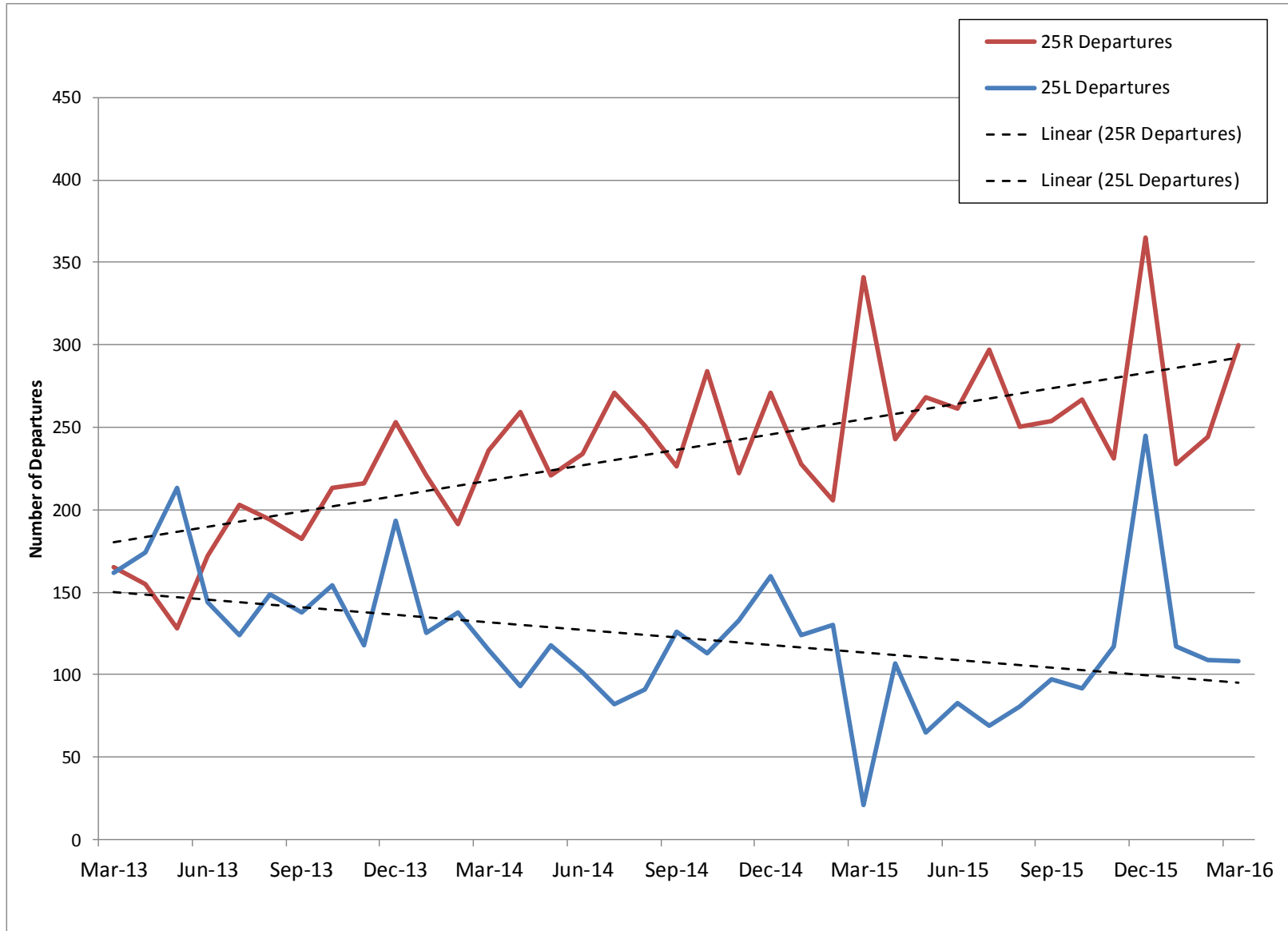
12 AM – 6:30 AM			
<i>Aircraft Category</i>	<i>25L Departures</i>	<i>25R Departures</i>	<i>Total</i>
Passenger	6%	94%	1990
General Aviation	17%	83%	30
Cargo	24%	76%	456
Total	11%	89%	2476

Cargo Departures on 25L & 25R by Operator

March 2016

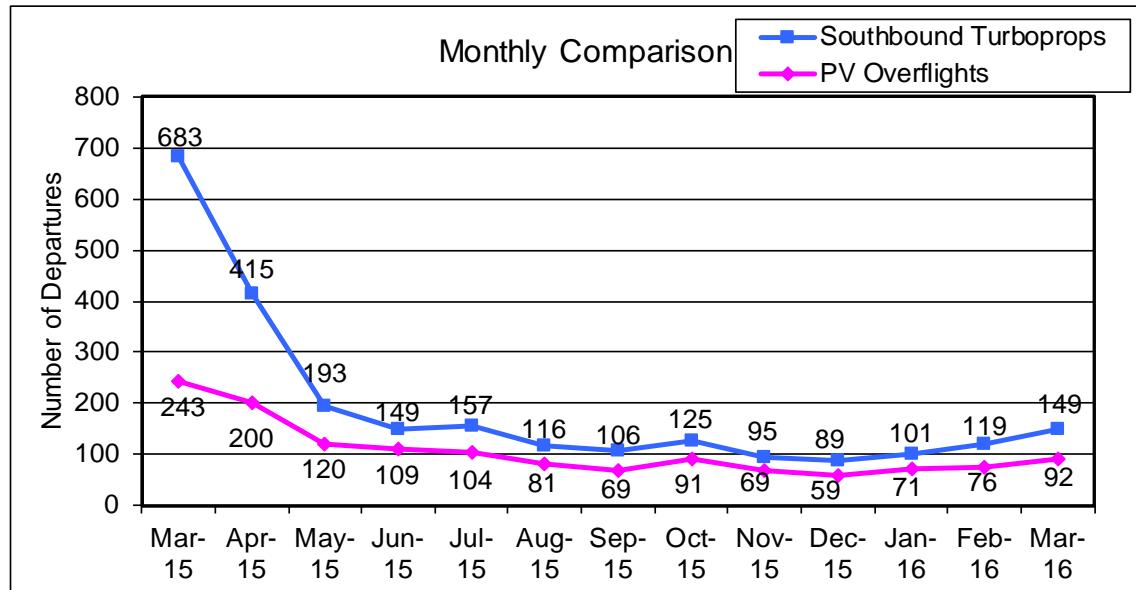
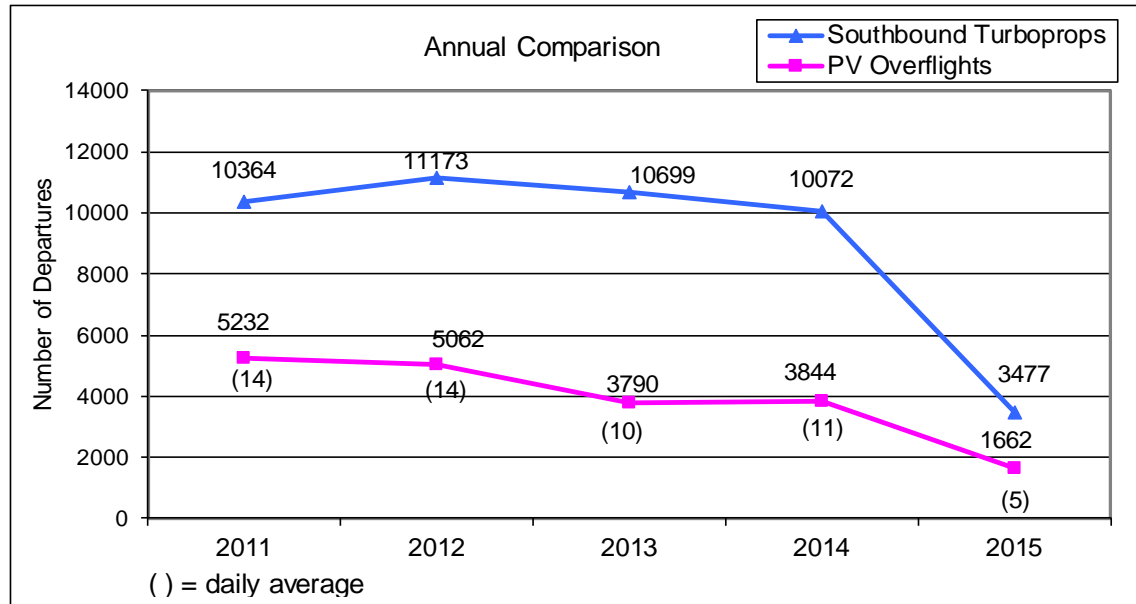
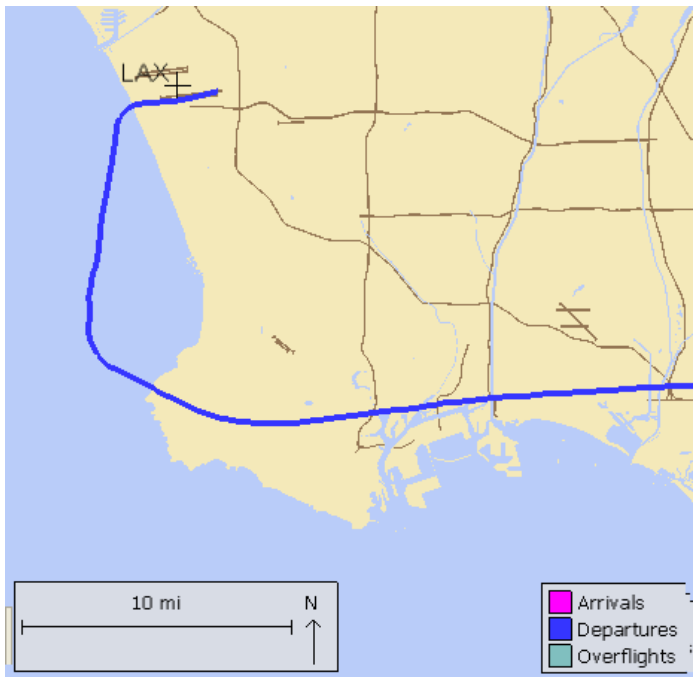


Fed Ex Departures on 25L & 25R

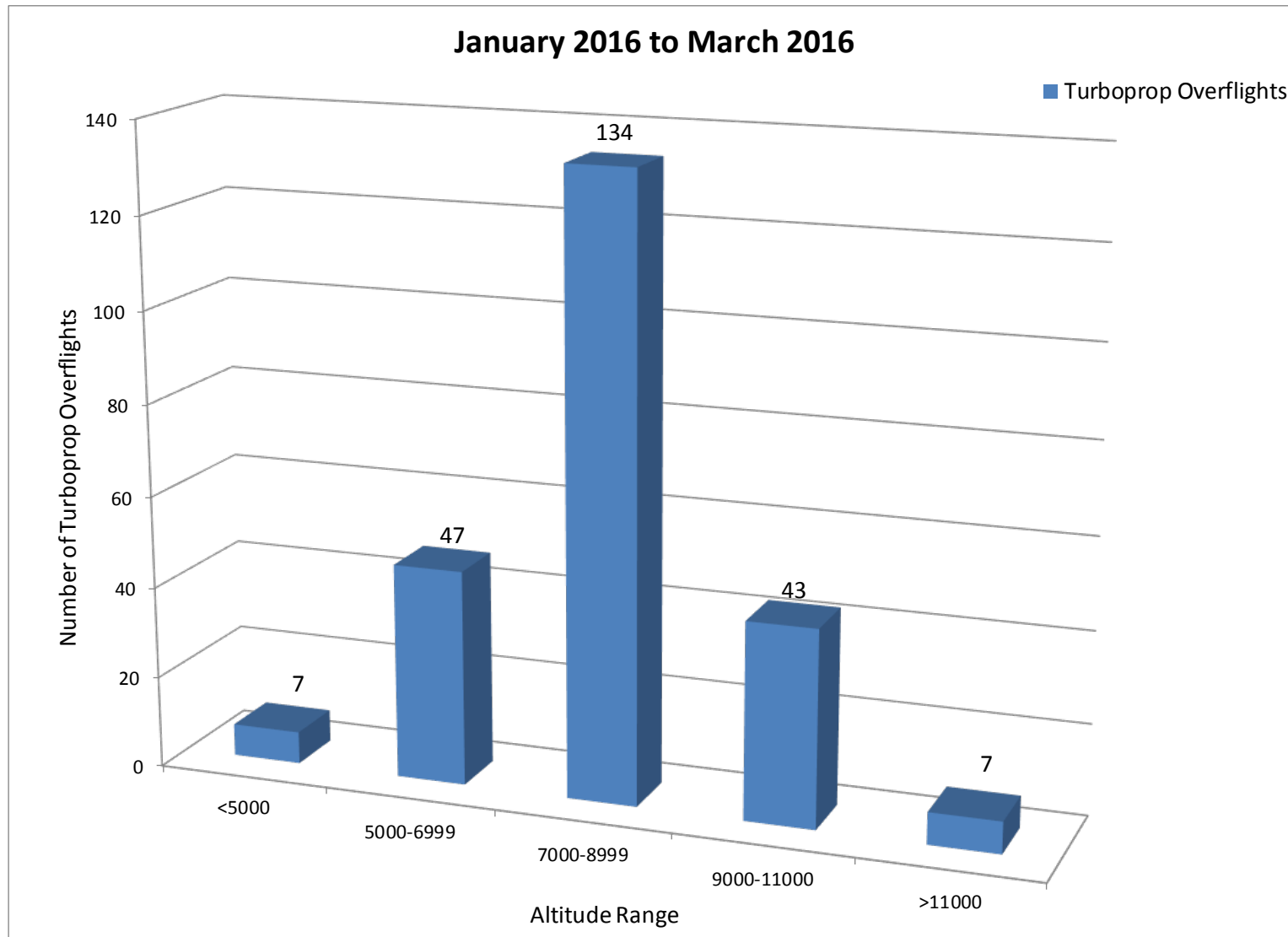


Palos Verdes Peninsula – Turboprop Overflights

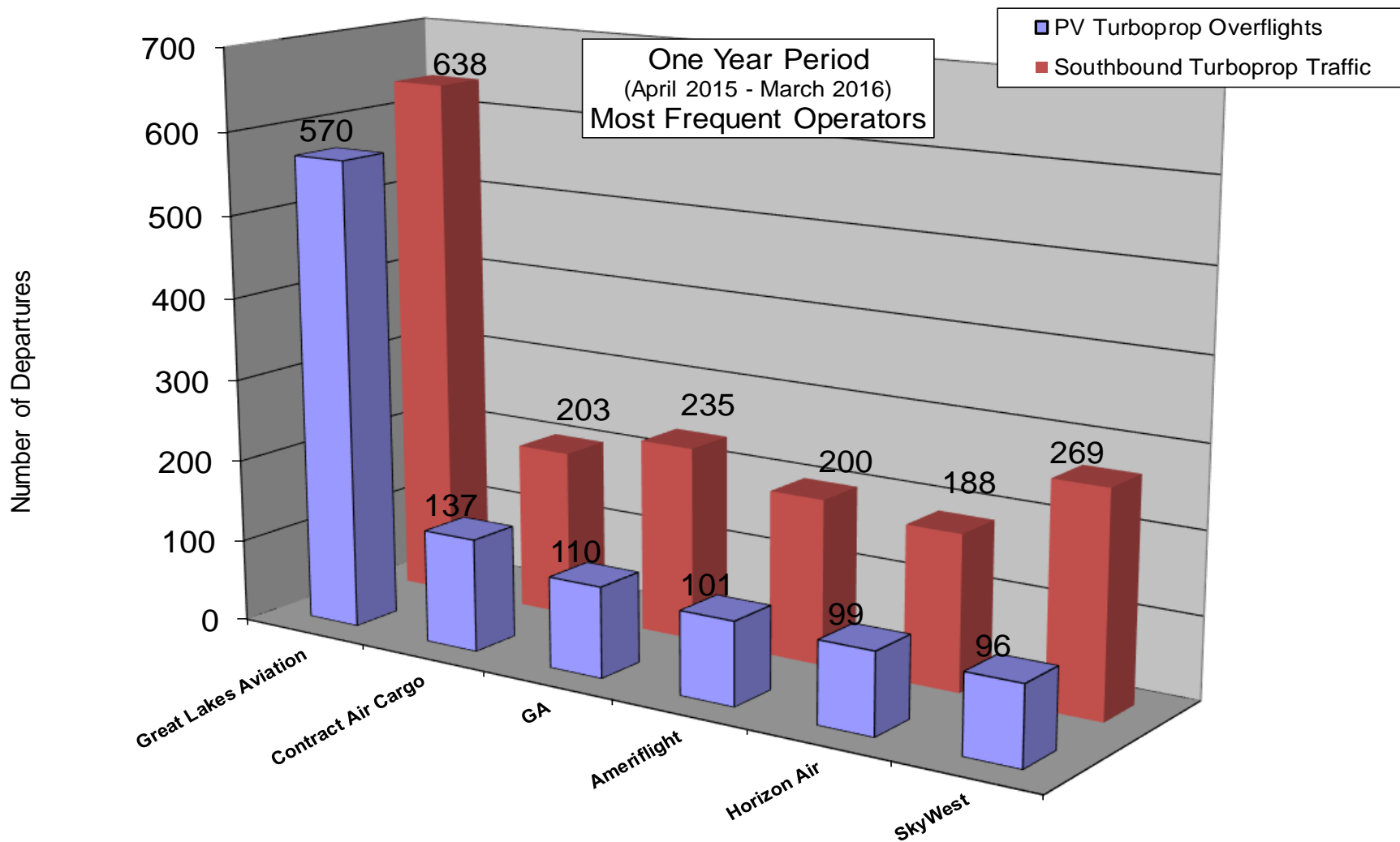
Monitoring southbound turboprops departing from LAX that overfly Peninsula



Turboprop Altitudes over PV

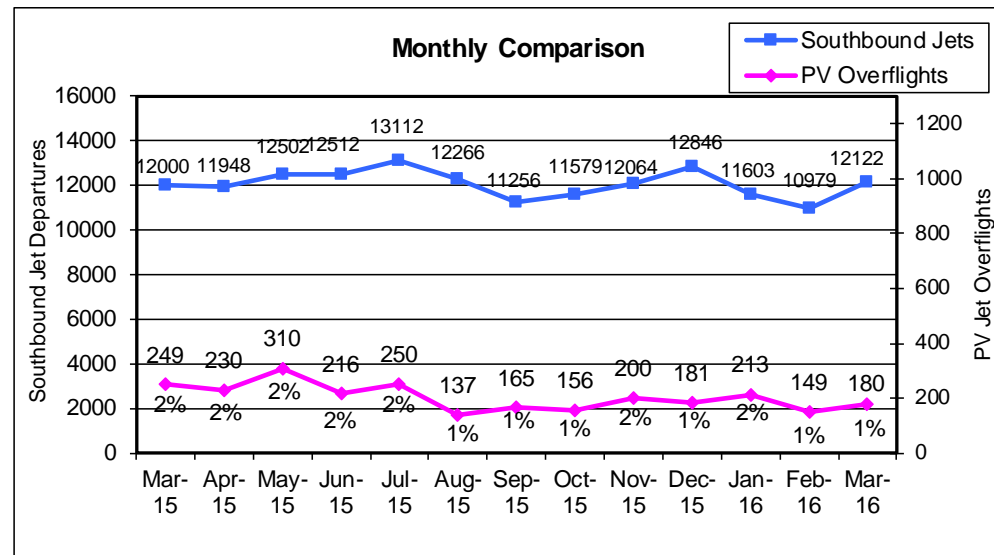
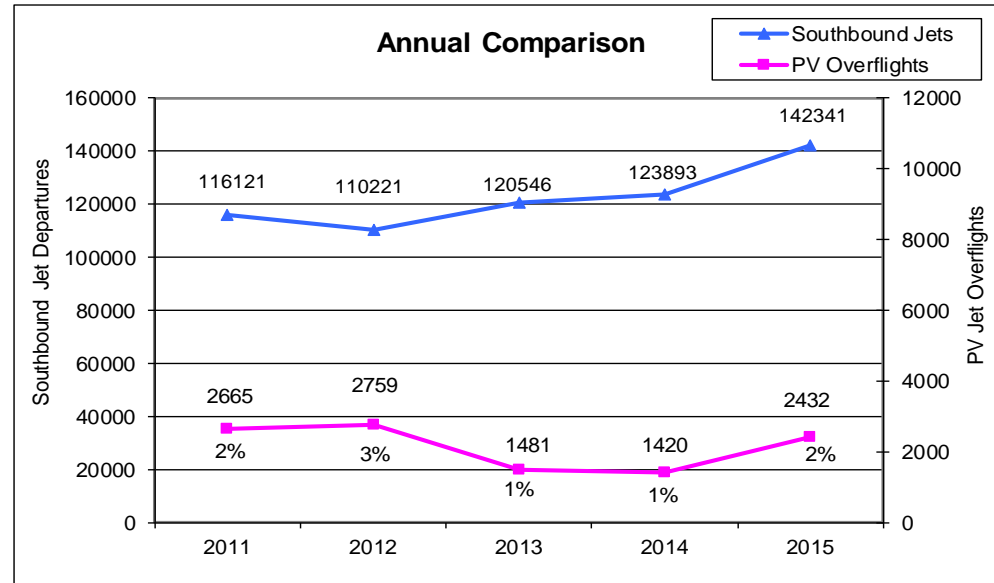
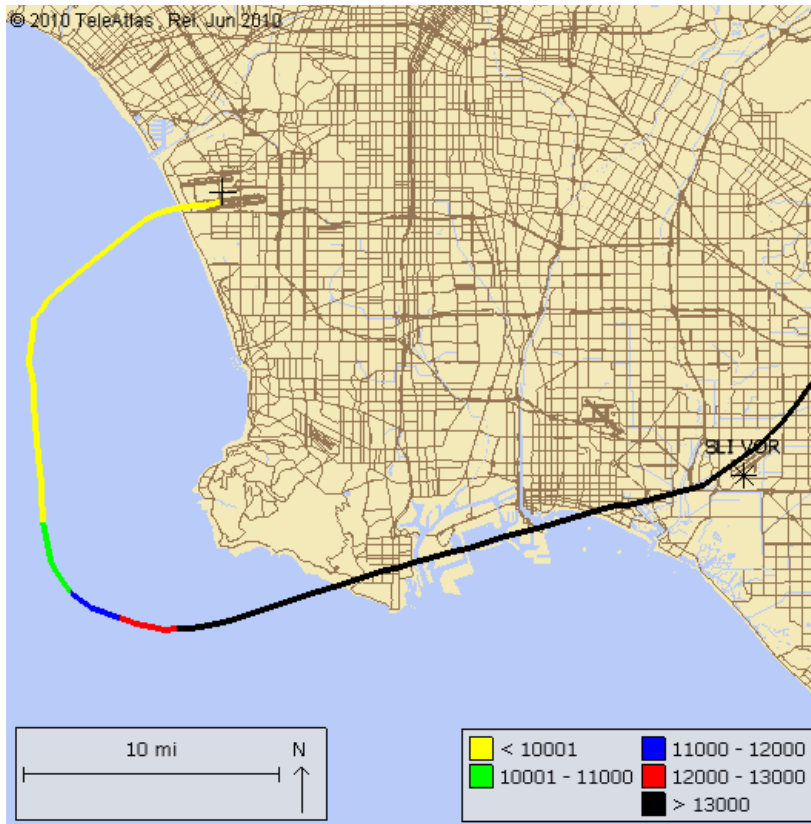


Turboprop Operators



Palos Verdes Peninsula – Jet Overflights

Monitoring southbound jets departing from LAX that overfly Peninsula



Jet Altitudes over PV Peninsula

