



Statistical Update on LAX Aircraft Operations

- Palos Verdes Overflights
- Extended North Downwind Approaches

September 11, 2019

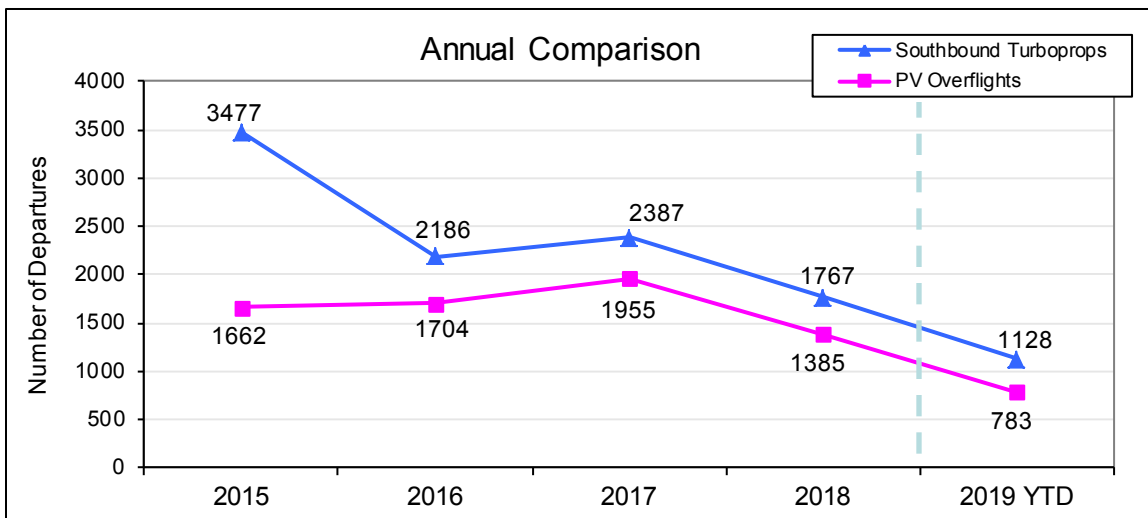
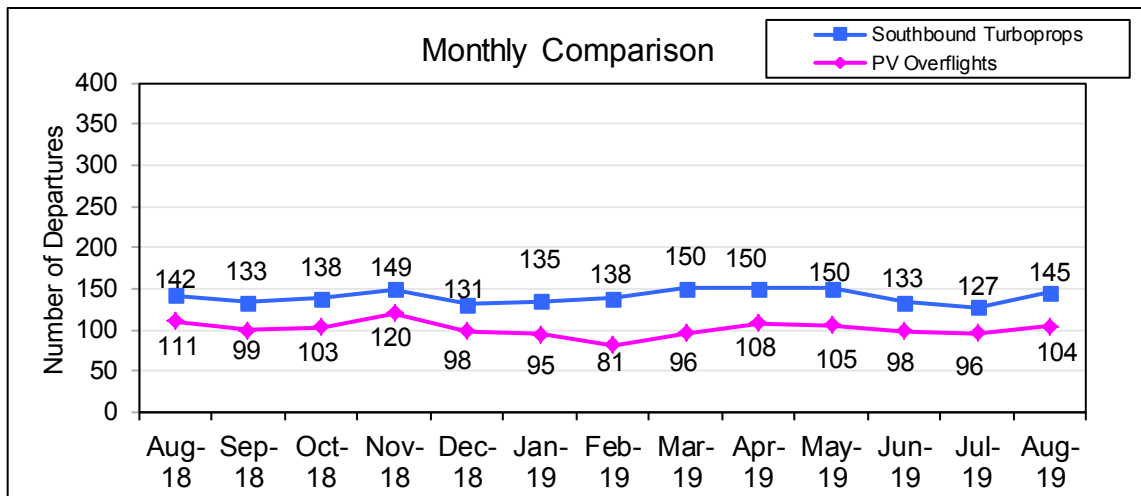
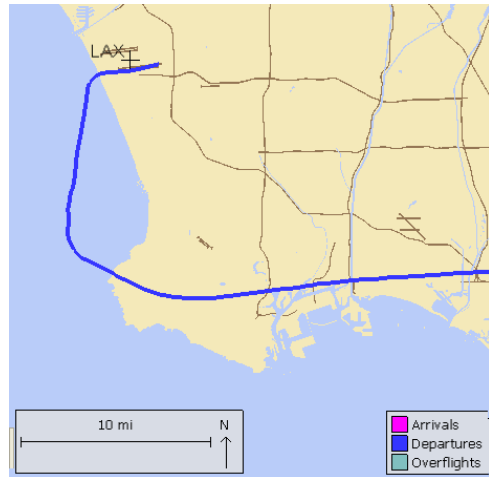
LAX/Community Noise Roundtable

Palos Verdes Peninsula – Turboprop Overflights

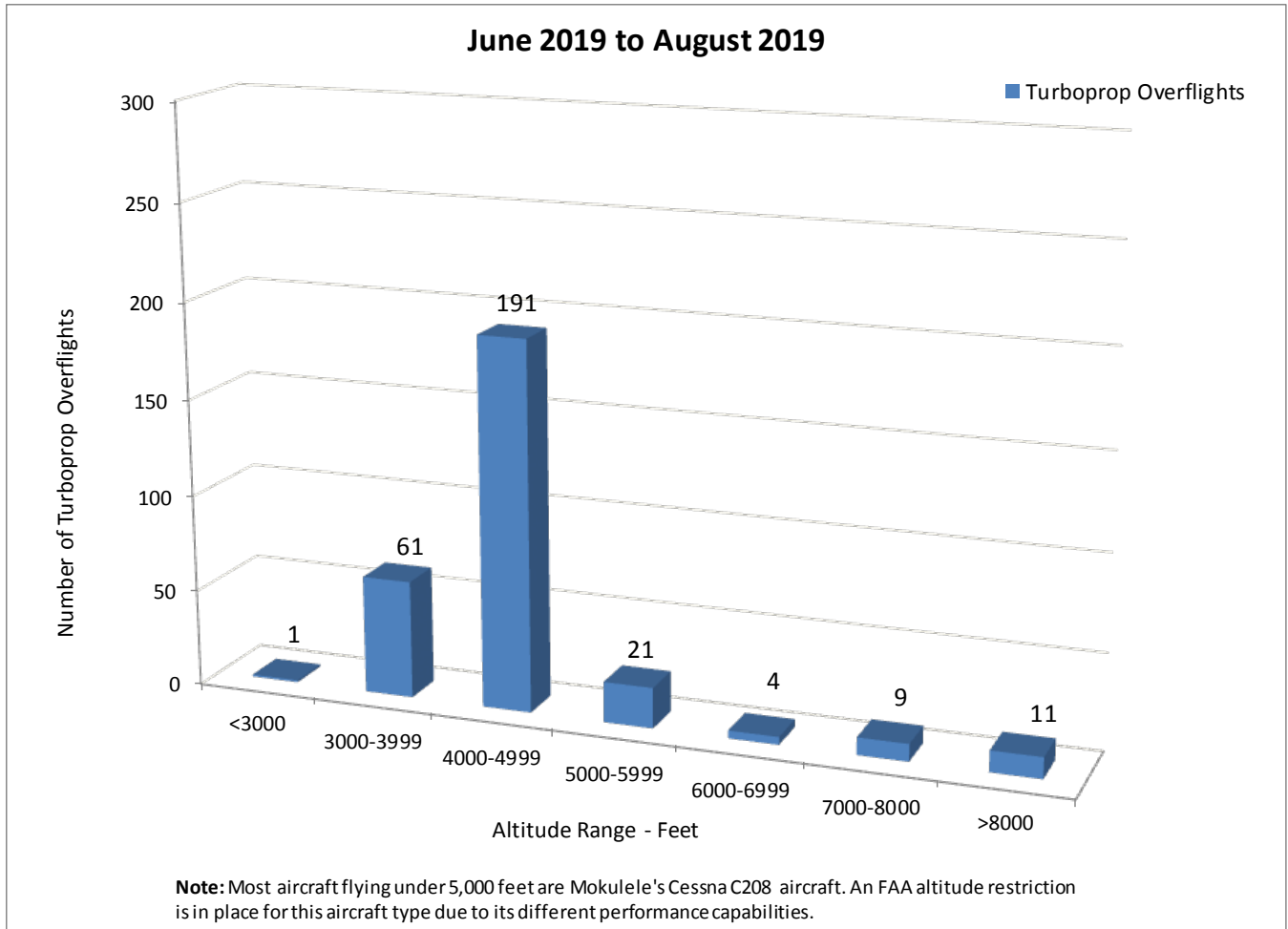
The graphs below show statistics of southbound turboprop aircraft that depart from LAX and fly over the Palos Verdes Peninsula, following an established FAA departure route.

Note: Prior to SkyWest's fleet mix change (turboprop to jet aircraft) in early 2015, the number of southbound turboprop departures were about 800 per month, with around 300 aircraft flying over the PV Peninsula.

Sample Turboprop Departure Flight Track



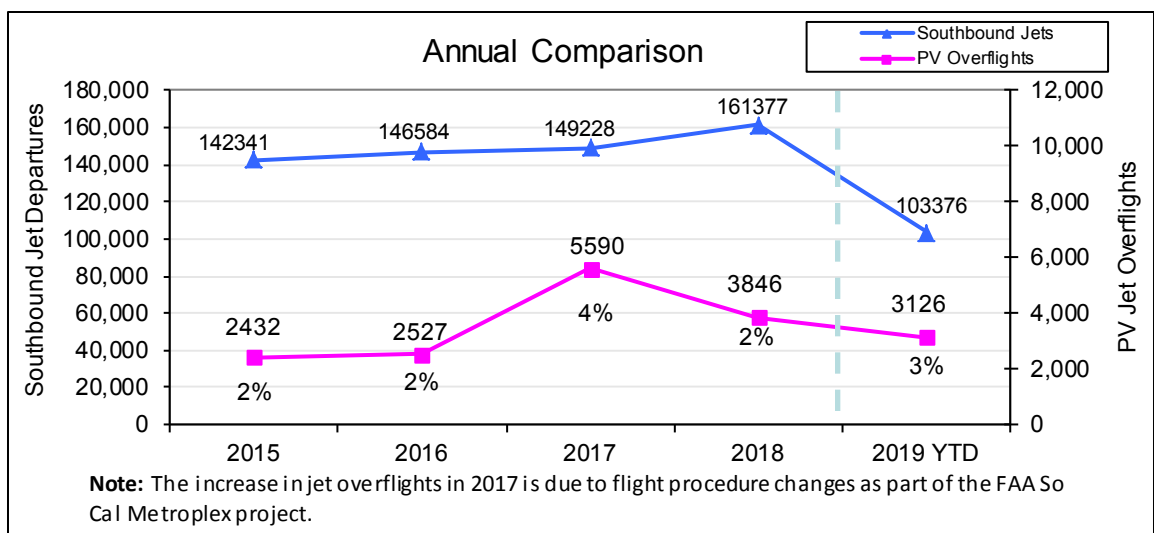
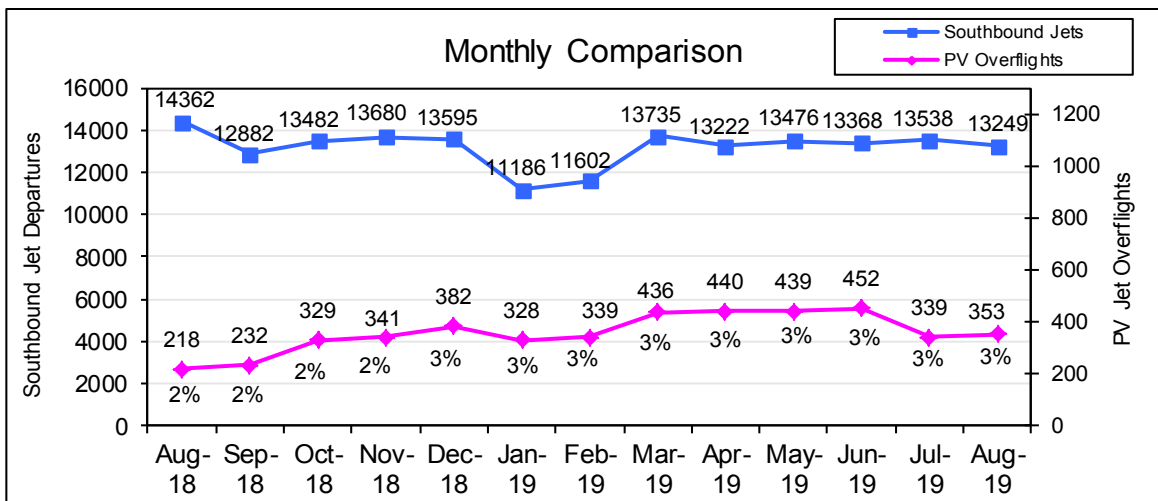
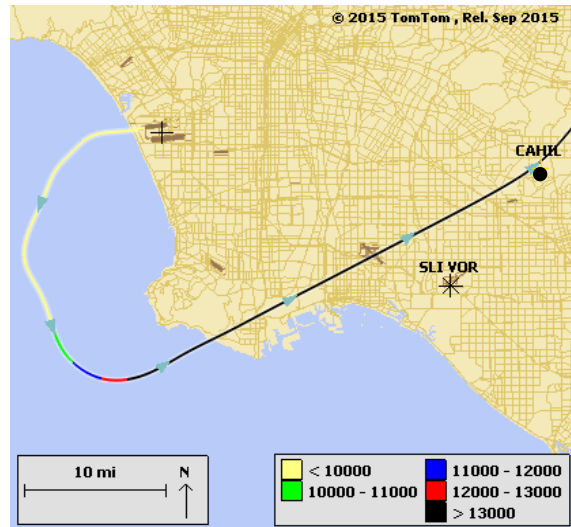
Turboprop Altitudes over PV Peninsula



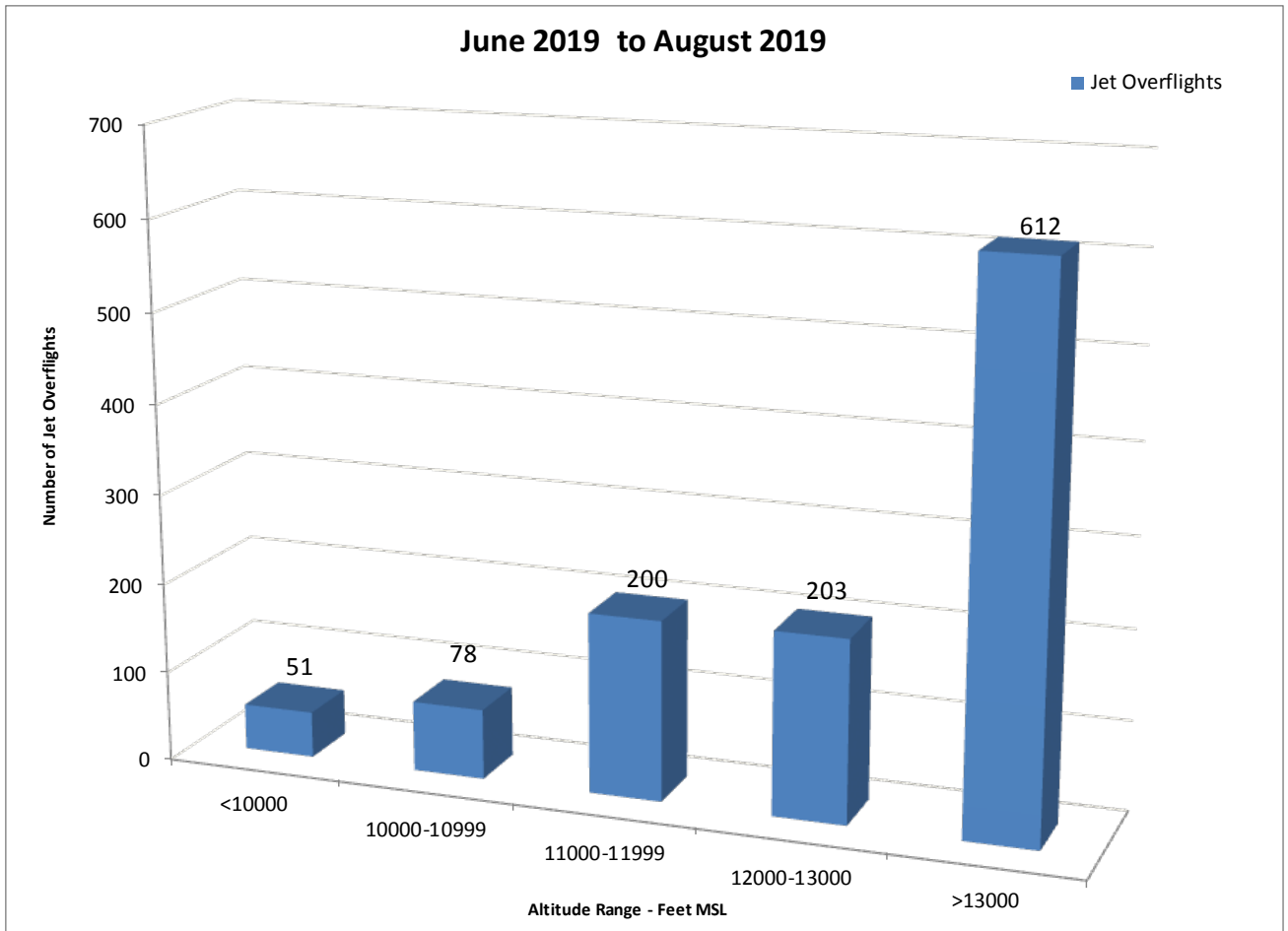
Palos Verdes Peninsula – Jet Overflights

The graphs below show the total number of jets turning south upon departure from LAX and the number of those departures that fly over the Palos Verdes Peninsula.

Sample Jet Departure Flight Track Over PV Peninsula

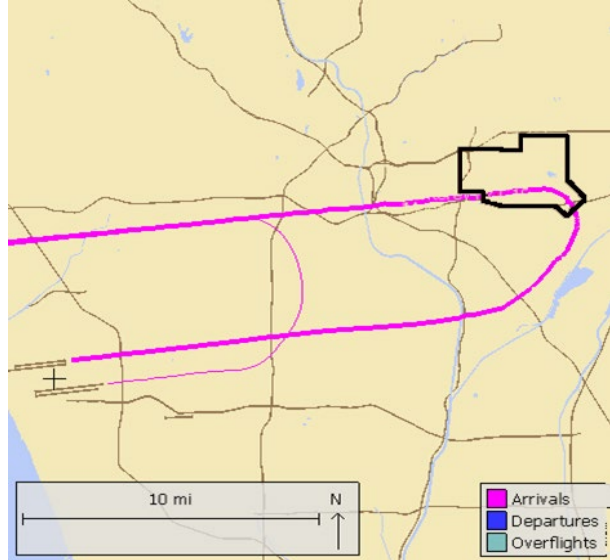


Jet Altitudes over PV Peninsula

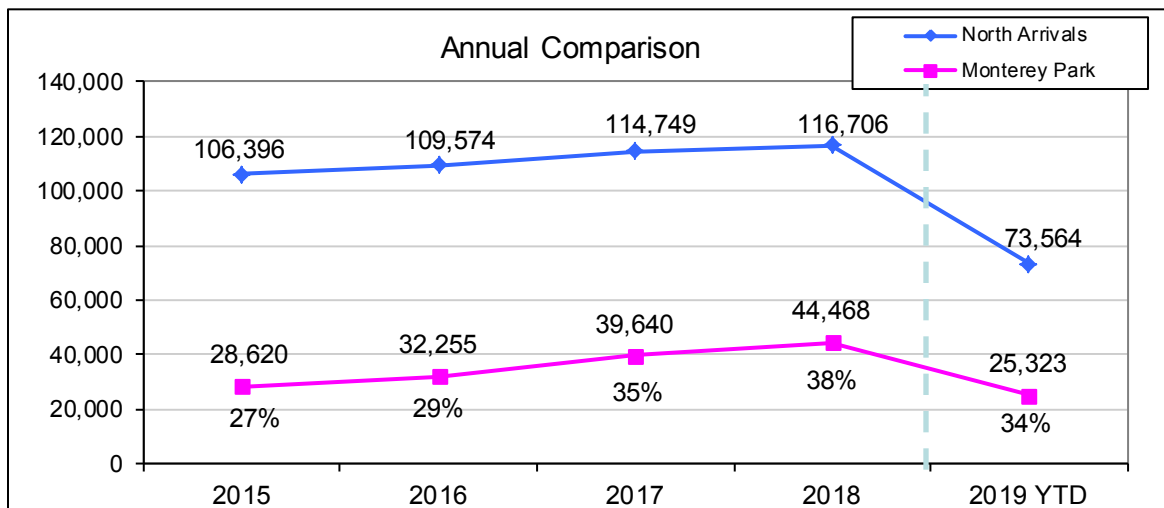
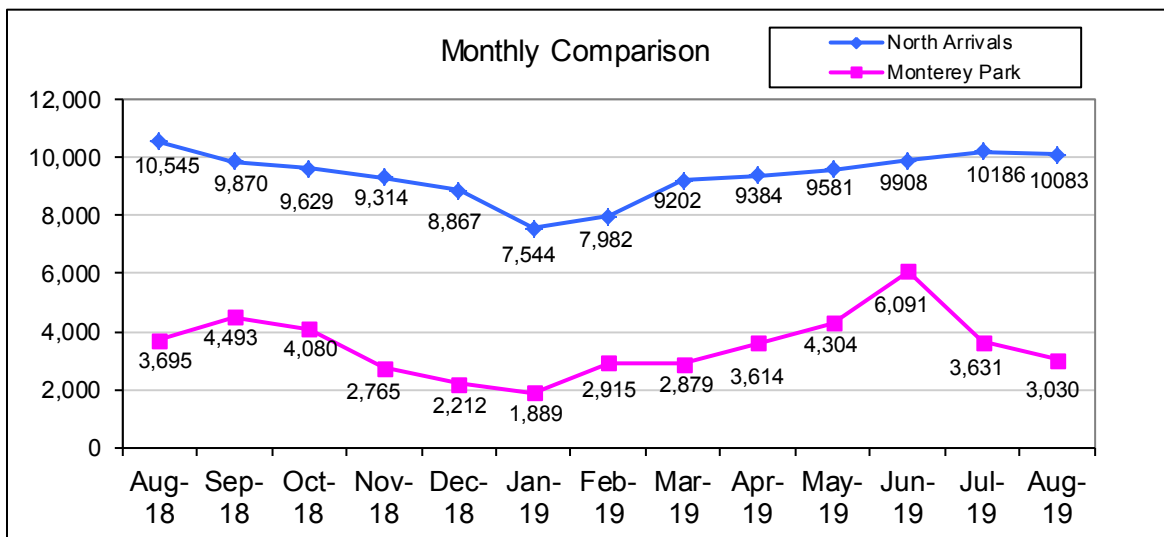


Extended North Downwind Approaches

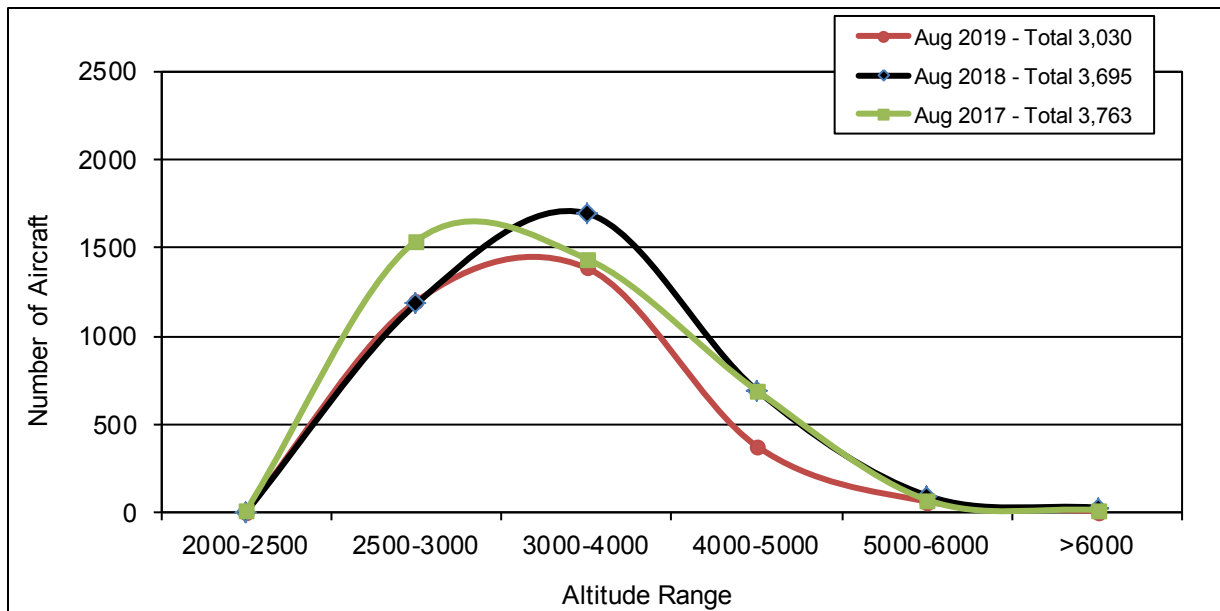
Sample Extended North Downwind Arrival Flight Track



The graphs below show data related to aircraft on the extended north downwind arrival route that fly over Monterey Park.



Altitude over Monterey Park



Number of Operations By Time of Day

