



# Statistical Update on Aircraft In-flight Procedures

April 8, 2009

LAX/Community Noise Roundtable



# Overview

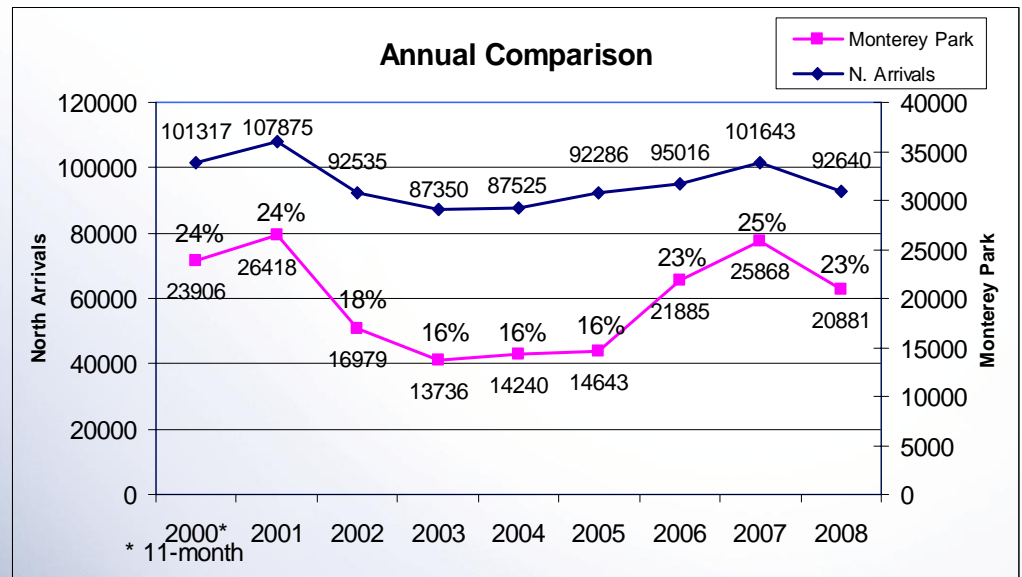
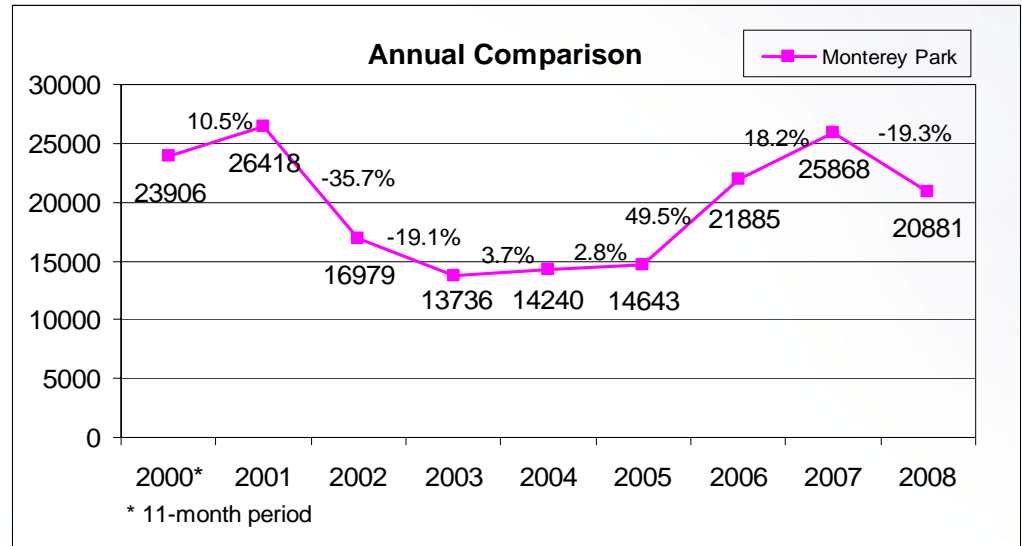
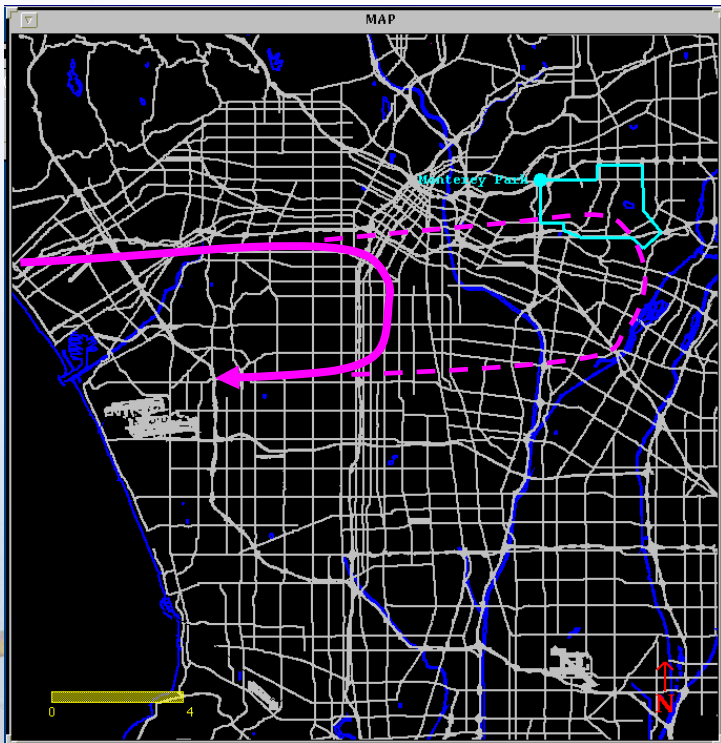
Statistical information on the following operations:

- Extended Downwind Approach
- Short Turns
- Go-arounds
- East Departures
- Early Turns
- Loop Departures
- Palos Verdes Overflights

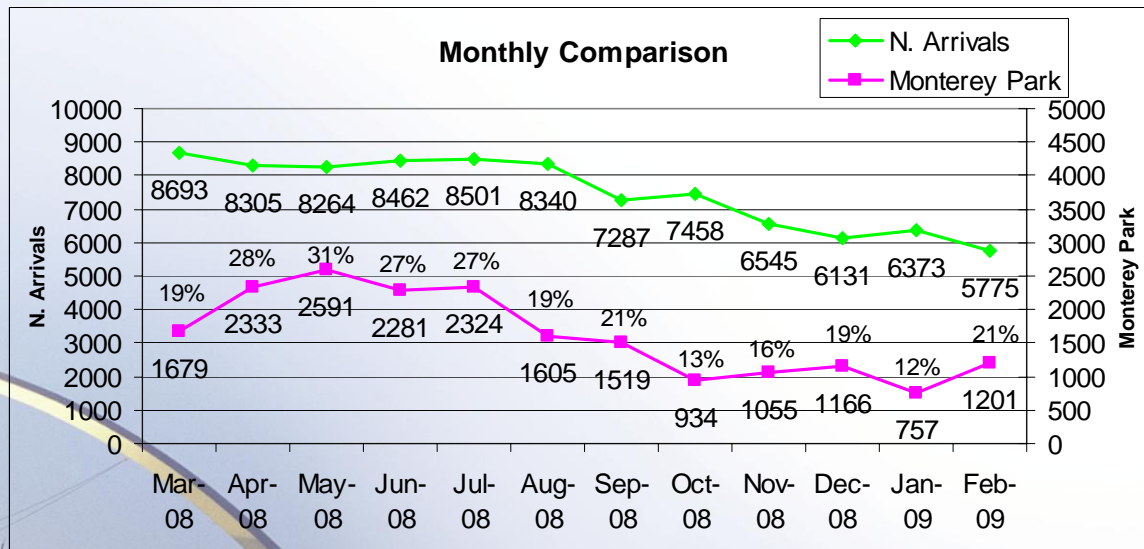
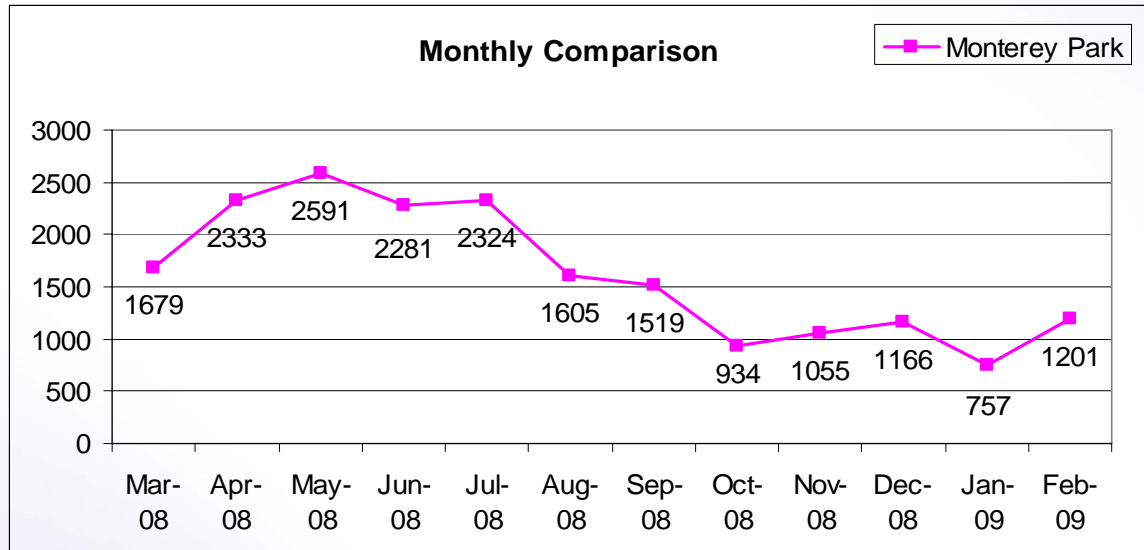


# Extended Downwind Approach

Monitoring north arrivals extending downwind over Monterey Park boundary

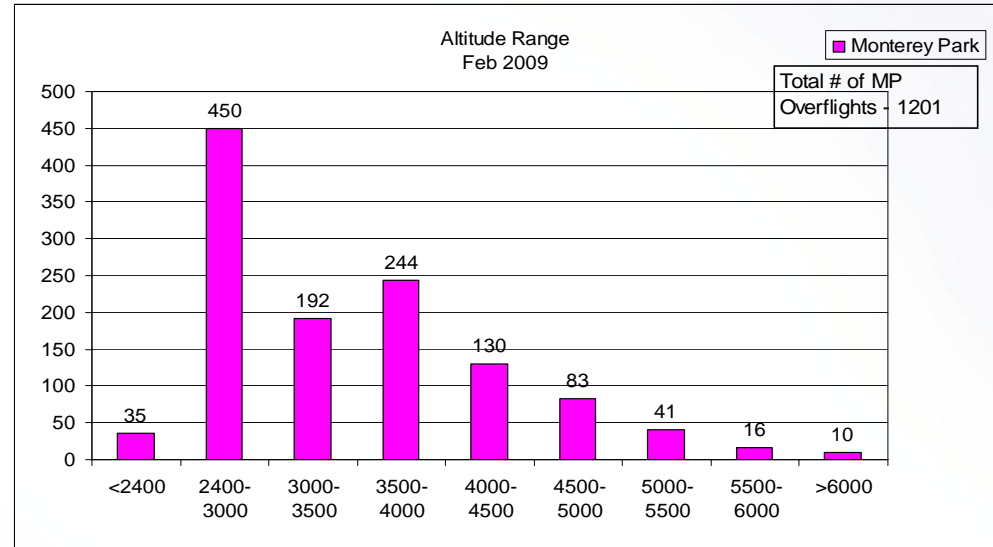


# Extended Downwind Approach

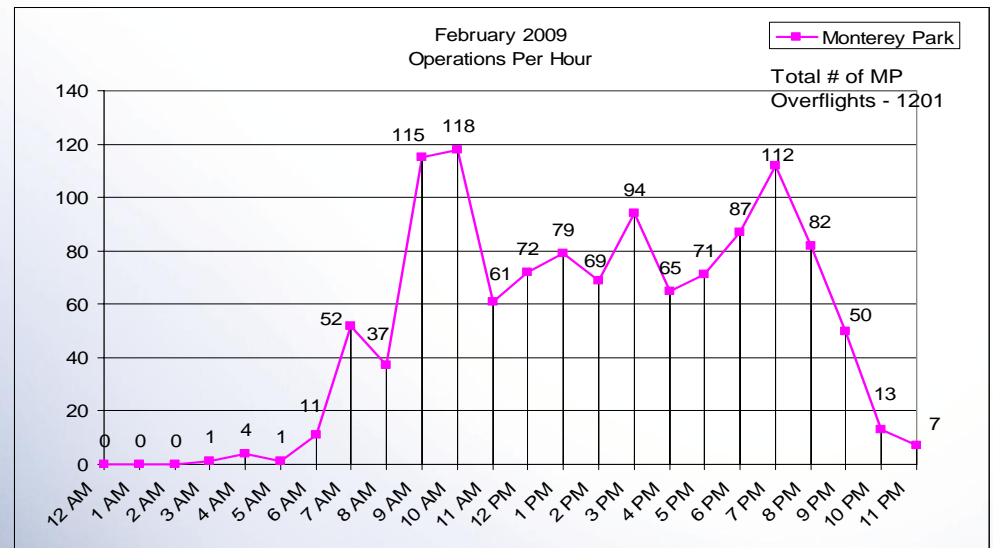


# Extended Downwind Approach February 2009

Altitude over  
Monterey Park

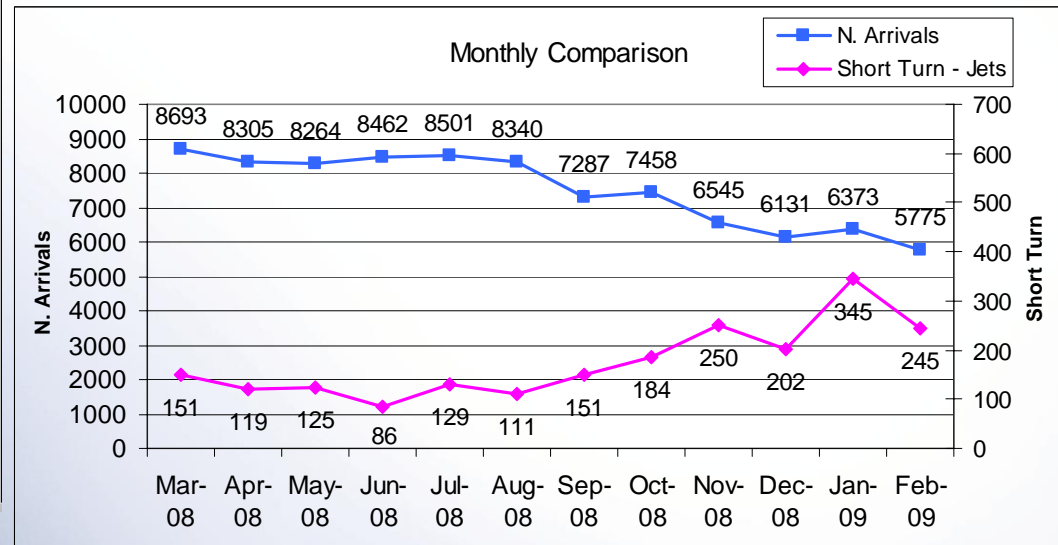
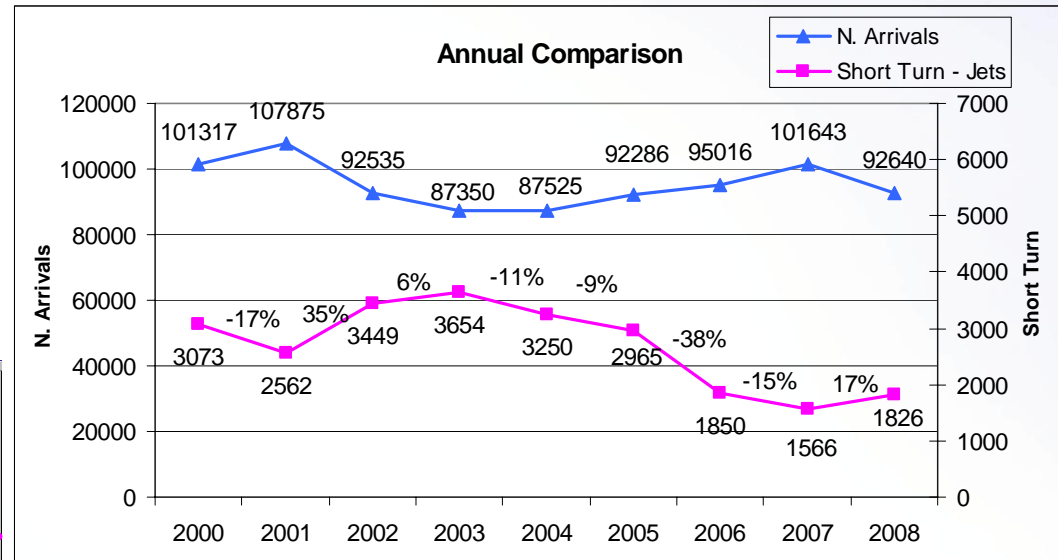
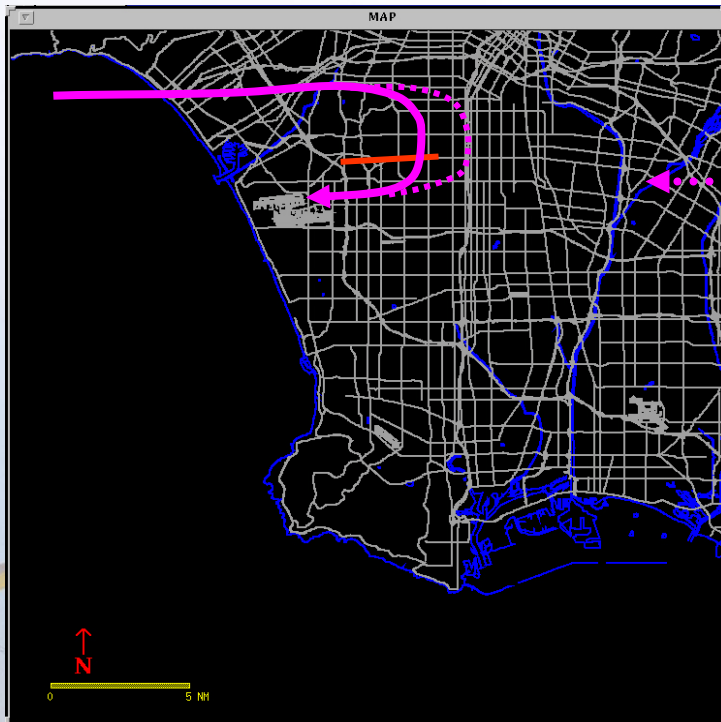


Number of  
Operations By  
Time of Day

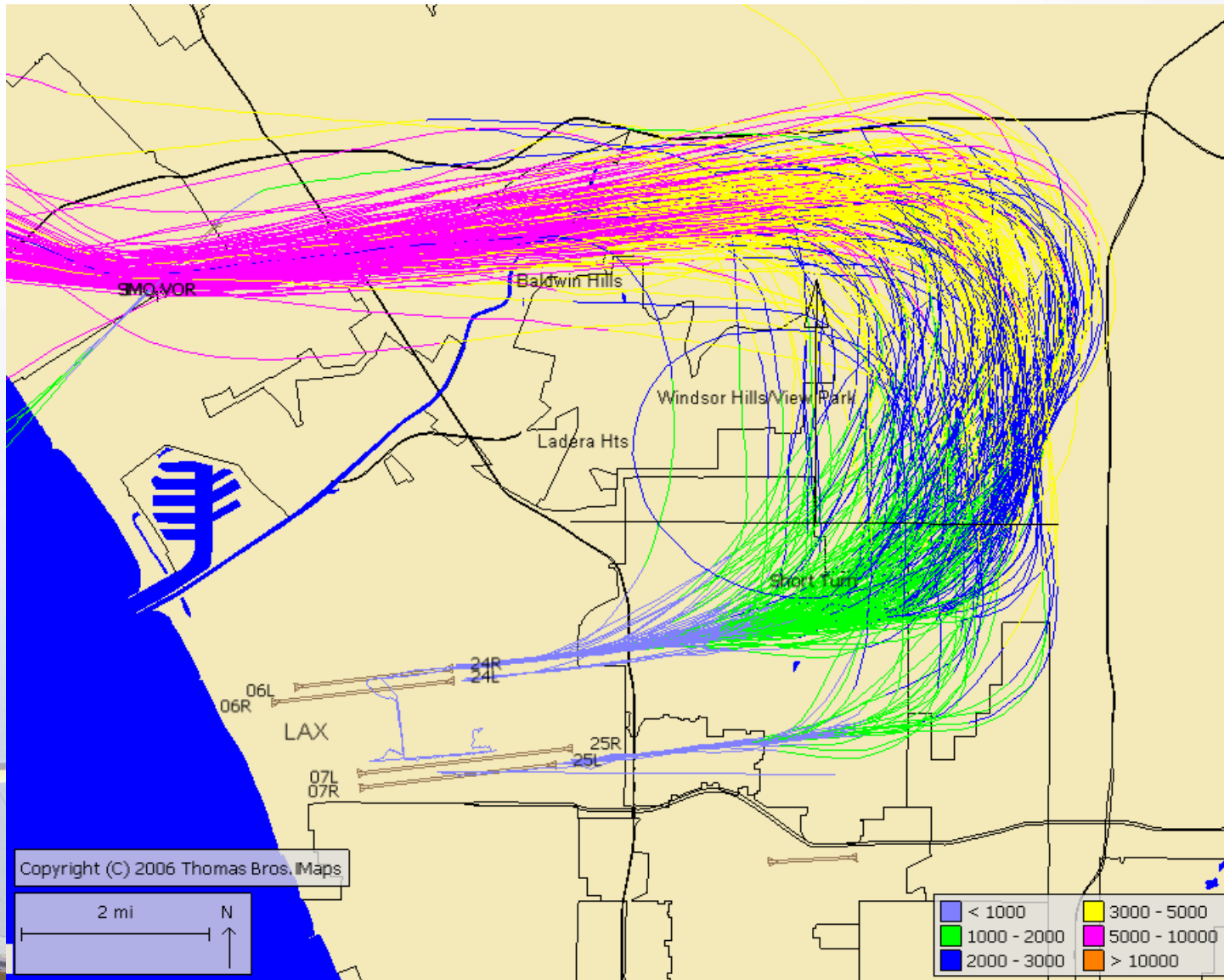


# Short Turn Arrivals

Arriving jet aircraft turning early prior to reaching the Harbor Freeway to land at LAX

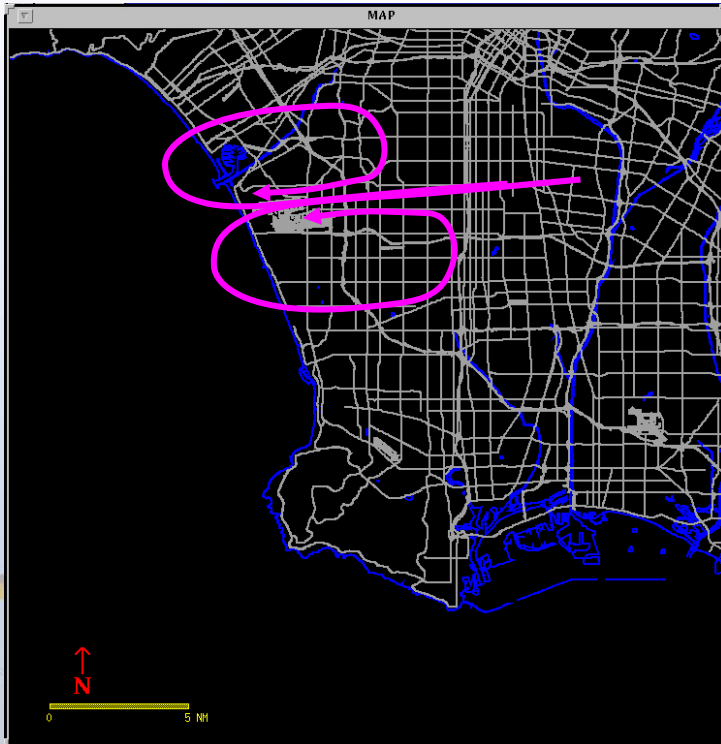


# Short Turn Arrivals – February 2009

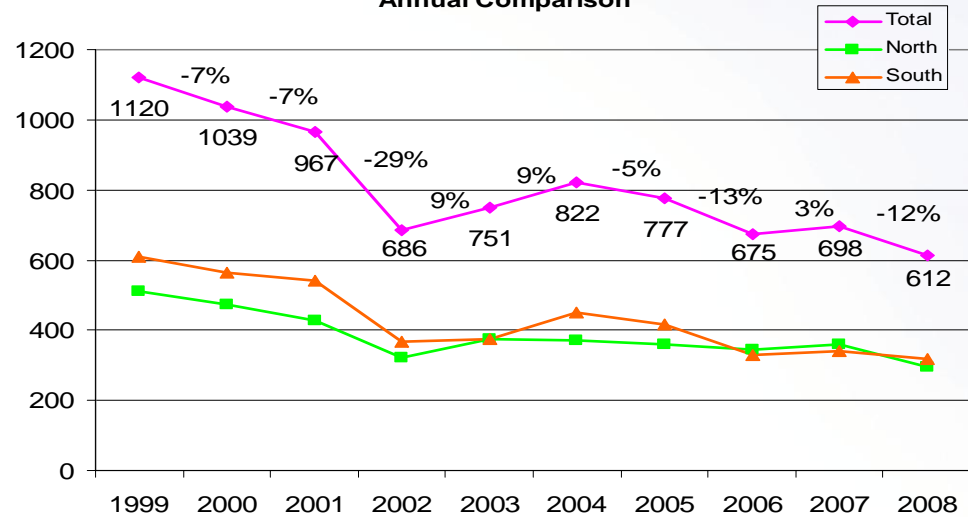


# Go-Arounds

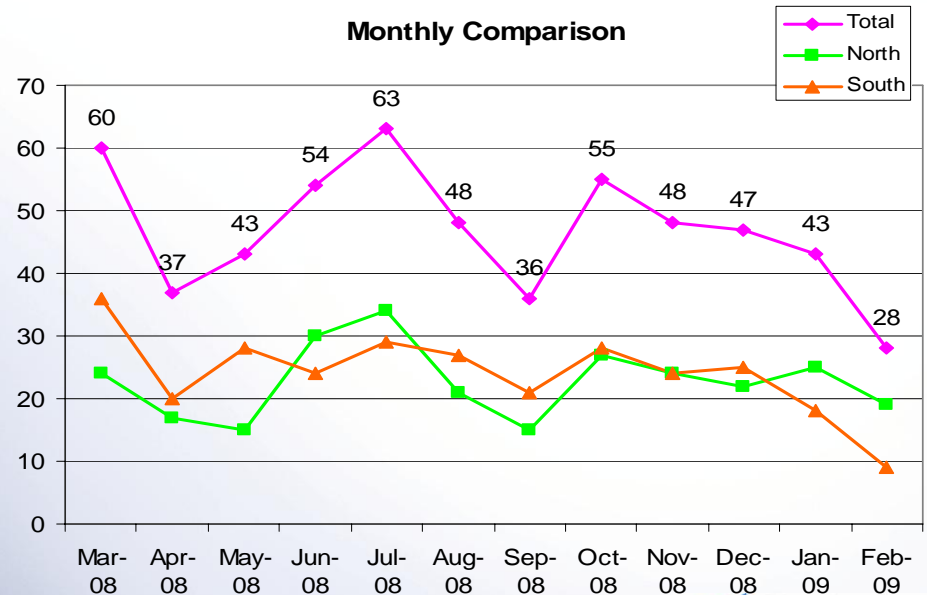
Monitoring pilot or ATC initiated go-arounds or missed approaches



Annual Comparison

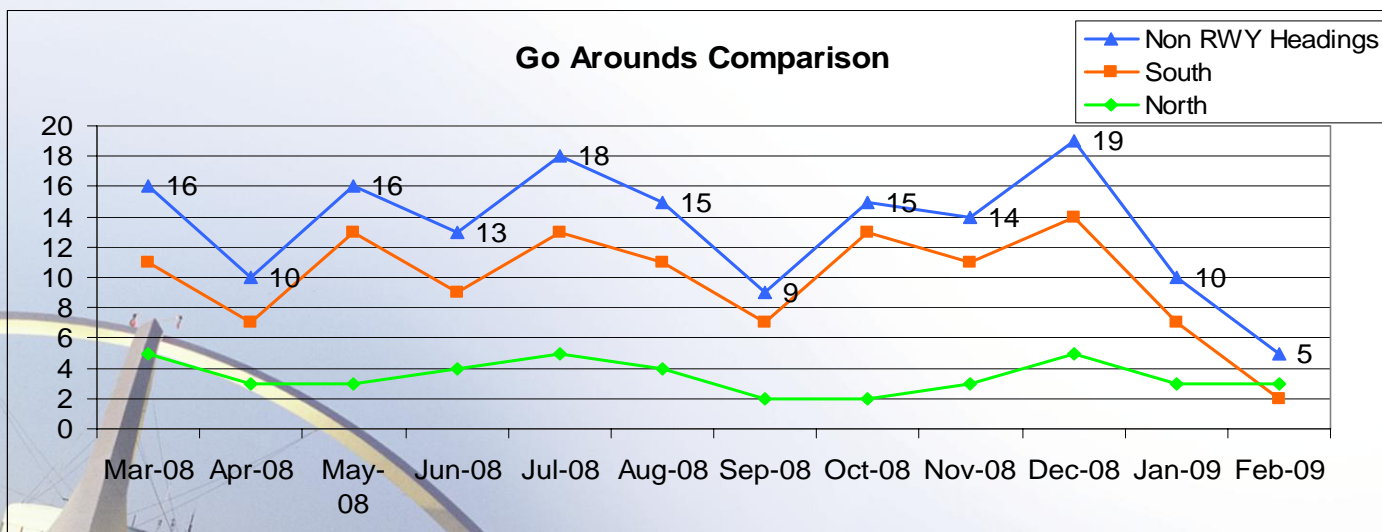
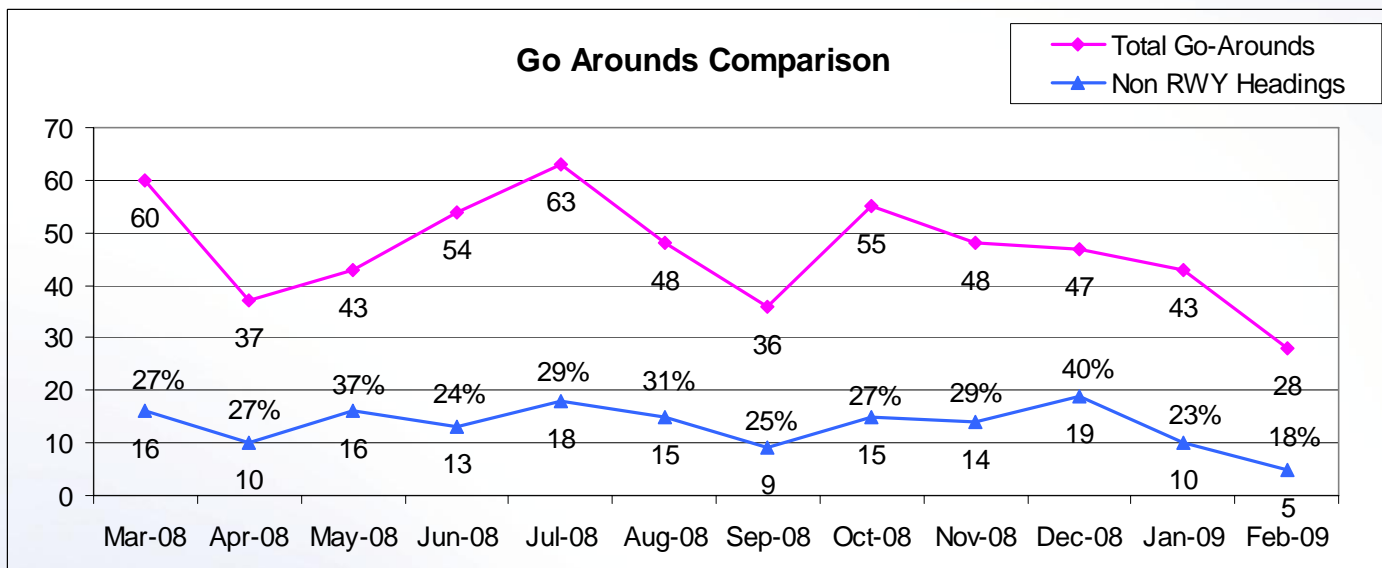


Monthly Comparison



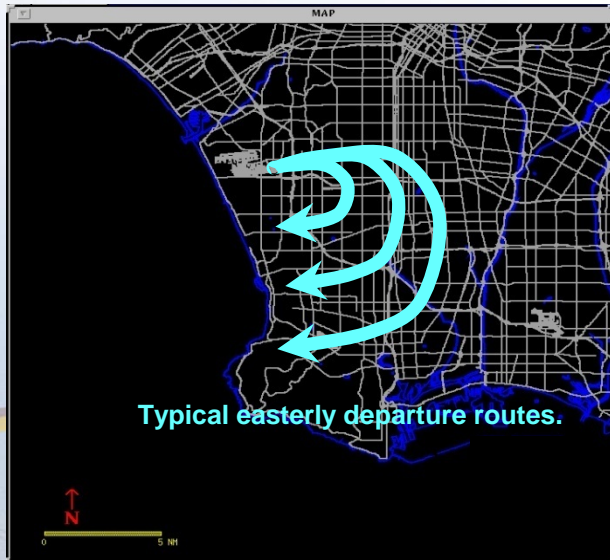


# Go-Arounds – Not Maintaining RWY Headings

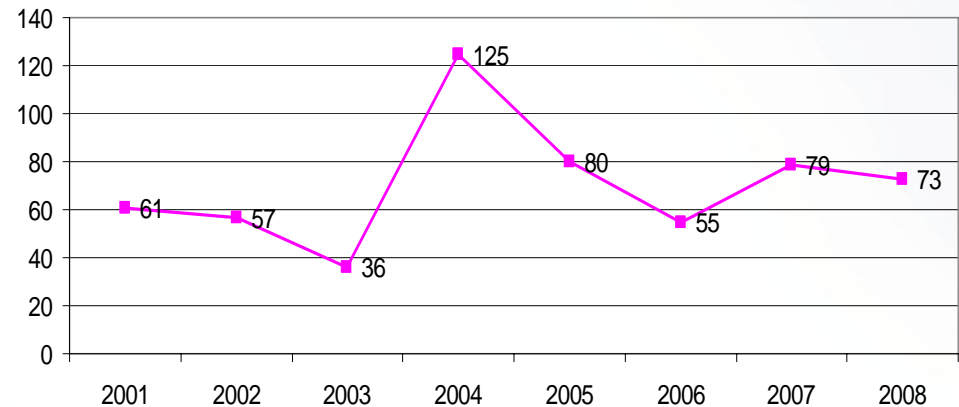


# Non-Conforming East Departures Midnight to 6:30 AM

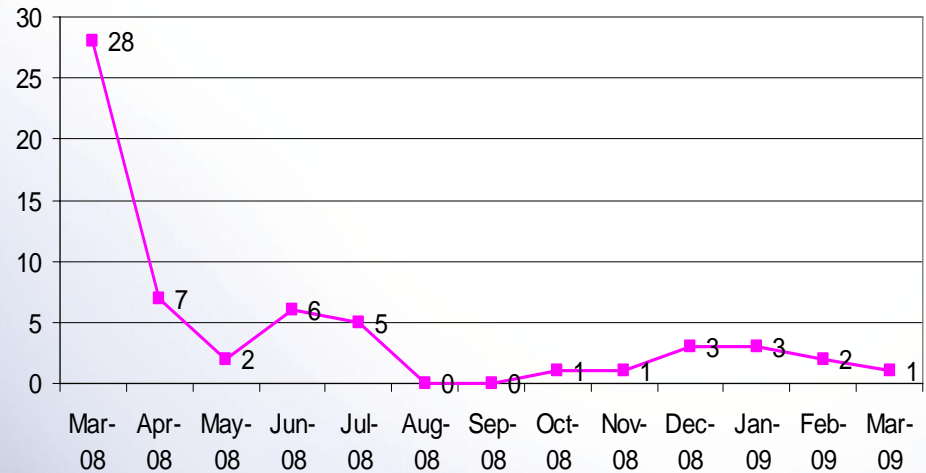
This report shows a summary of aircraft operations that depart to the east while the airport is still conducting westerly departures between midnight and 6:30 a.m. These individual easterly departures usually occur when the pilot of a heavy aircraft (e.g. B747s) determines that the tail wind is too great for the weight of the aircraft and requests to depart east into the wind for aircraft safety.



### Annual Comparison



### Monthly Comparison

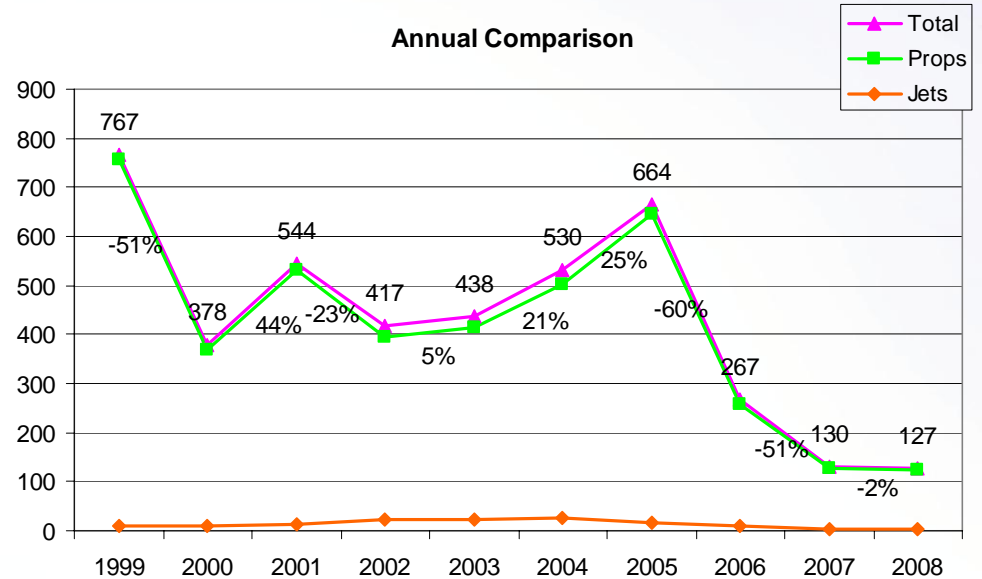


# Early Turn to the North

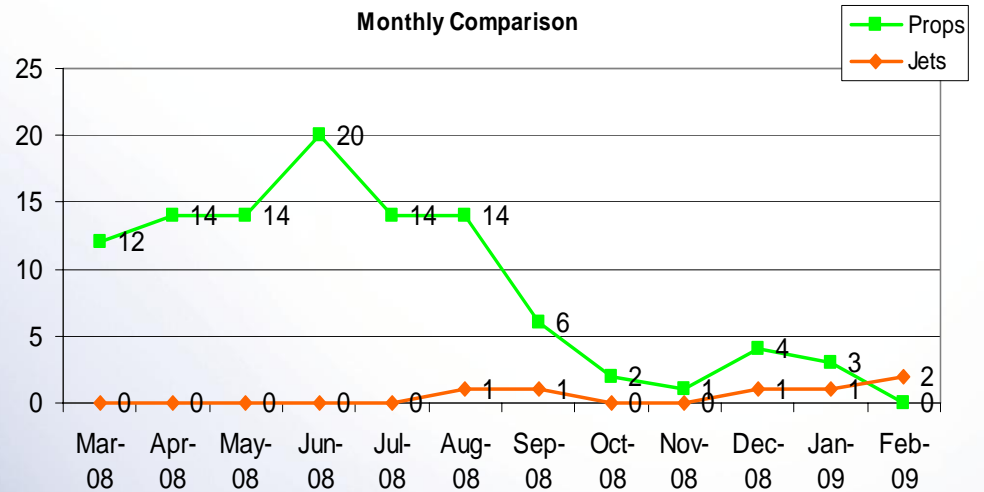
Aircraft departing to the ocean turn early prior to reaching the shoreline



Annual Comparison

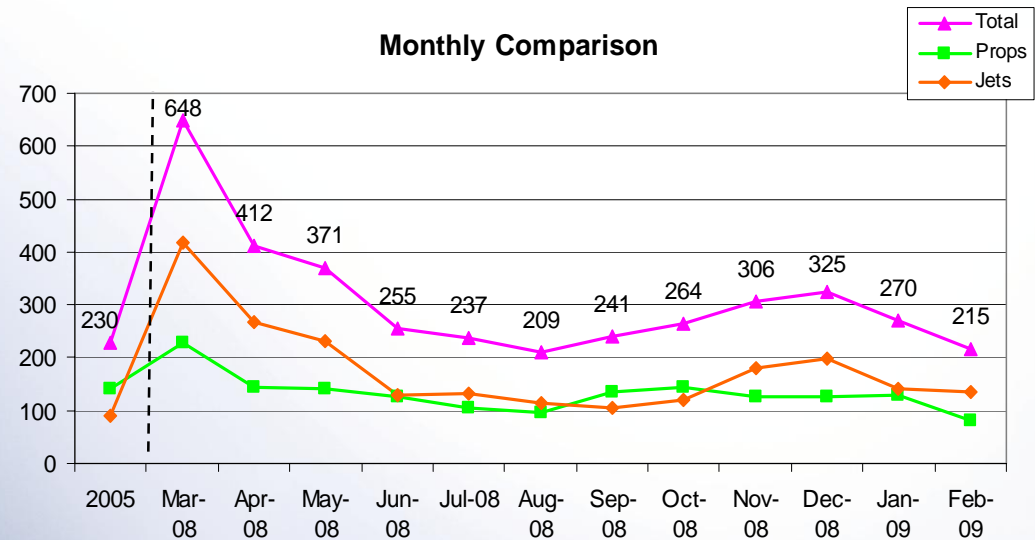
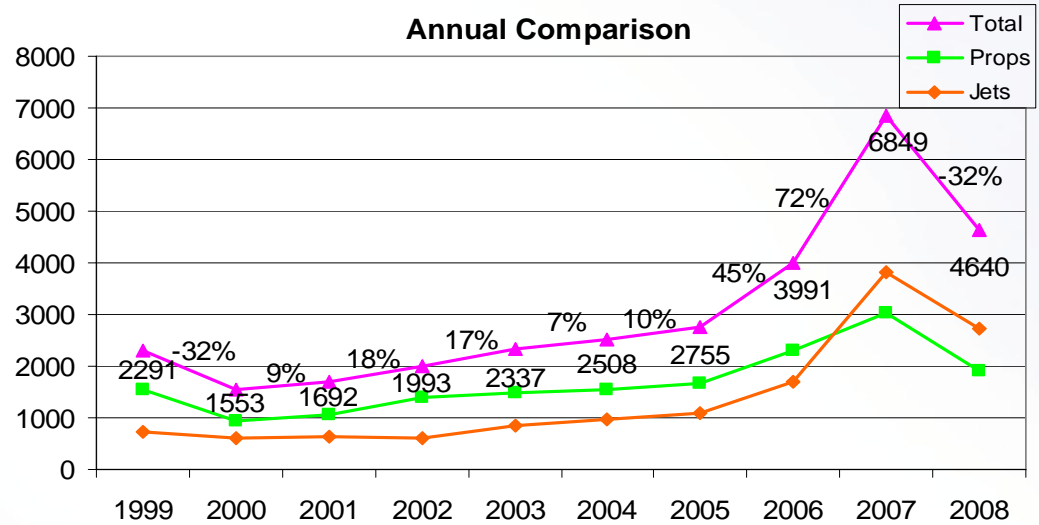


Monthly Comparison



# Early Turn to the South

Aircraft departing to the ocean turn early prior to reaching the shoreline



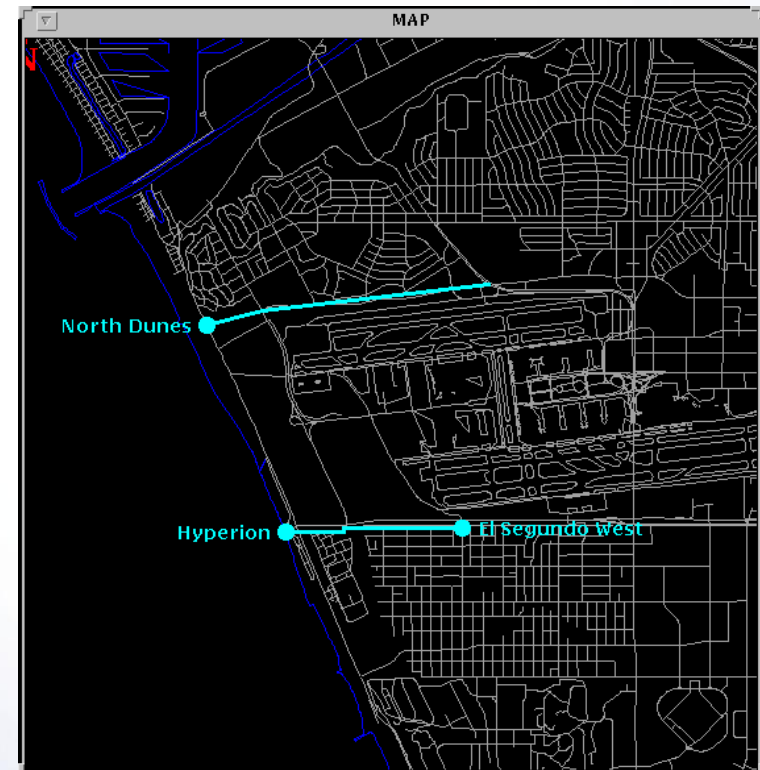
# Early Turns Breakdown

## February 2009

<b>Total Early Turn Ops</b>	<b>217</b>
<b>Hyperion Gate</b>	<b>171</b>
<b>El Segundo Gate</b>	<b>44</b>
<b>North Dunes Gate</b>	<b>2</b>

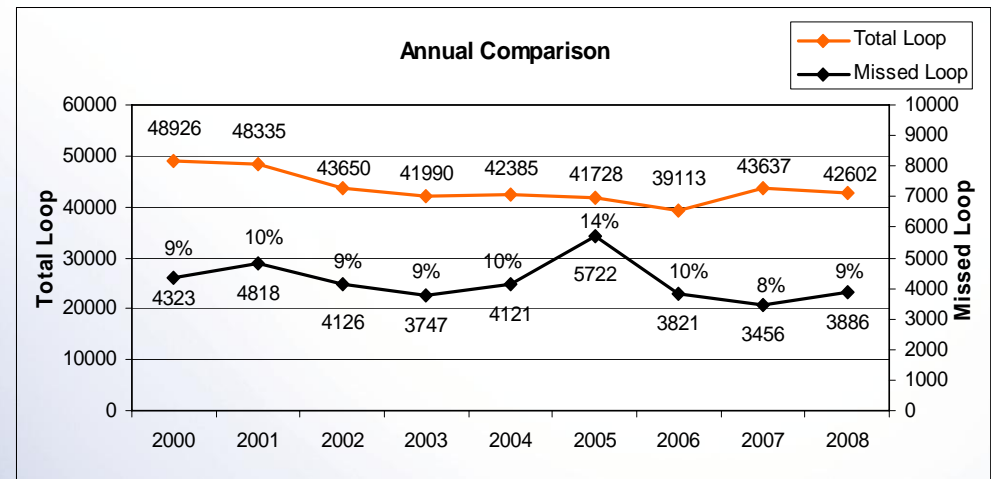
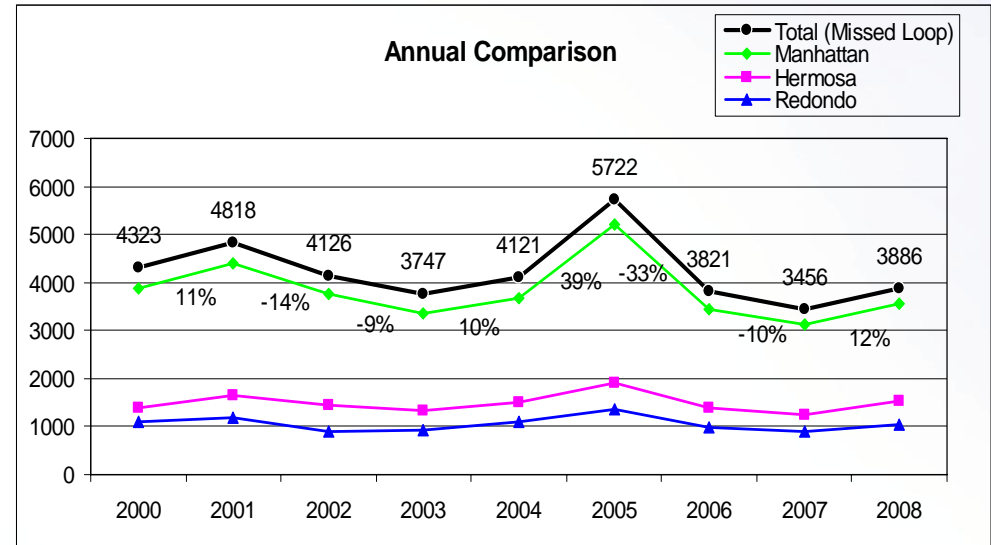
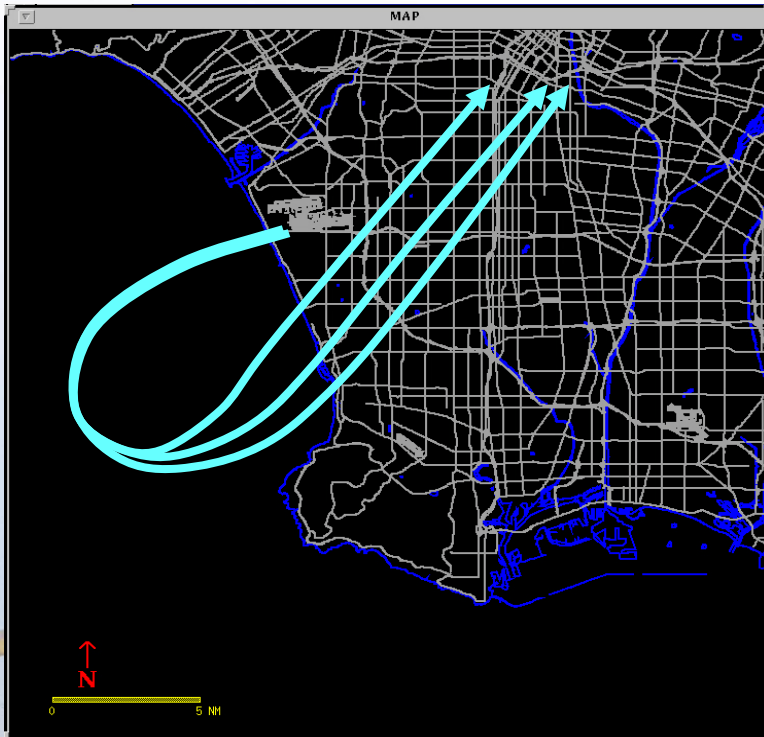
### Result of Investigation

<b>Total</b>	<b>46</b>
<b>FAA instructed</b>	<b>13</b>
<b>Pilot initiated</b>	<b>23</b>
<b>Wind drift</b>	<b>10</b>

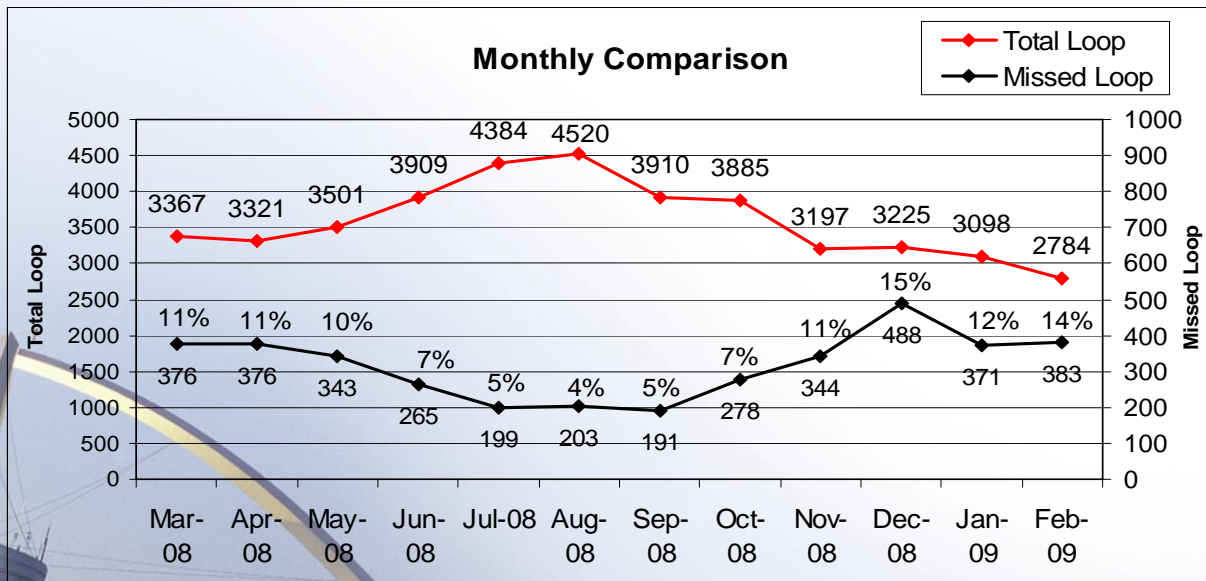
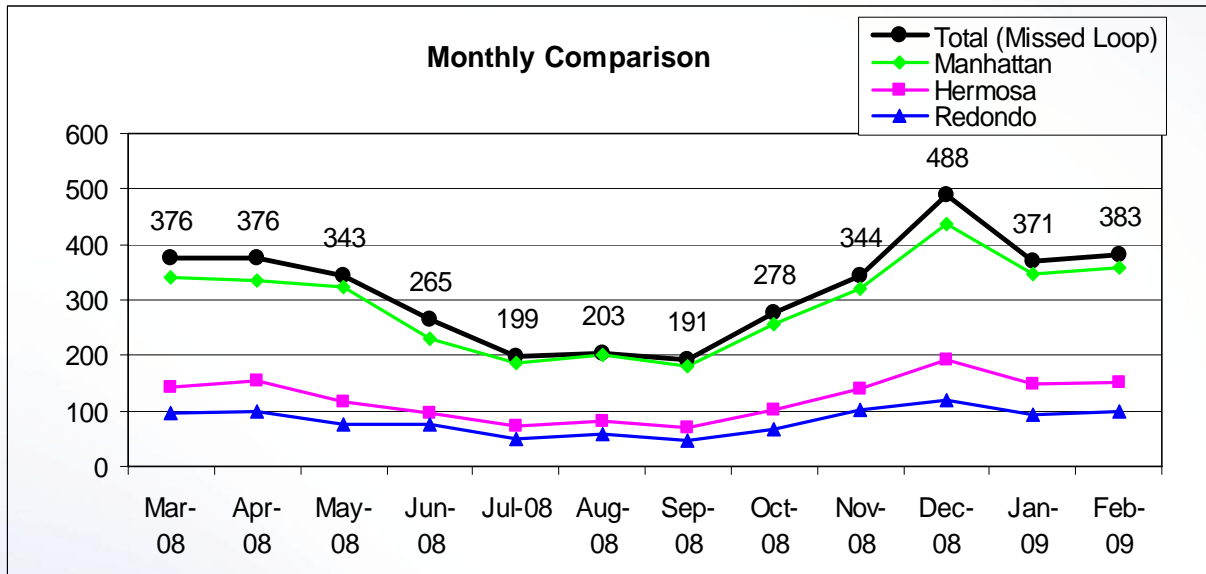


# Missed LAX Loop Departure – By Community

Monitoring loop departures overflying communities



# Missed LAX Loop Departure – By Community



# Palos Verdes Peninsula – Turboprop Overflights

Monitoring southbound turboprops departing from LAX that overfly Peninsula

