



# **Initial Comparison of Extended Downwind Approach Before and After Metroplex Implementation**

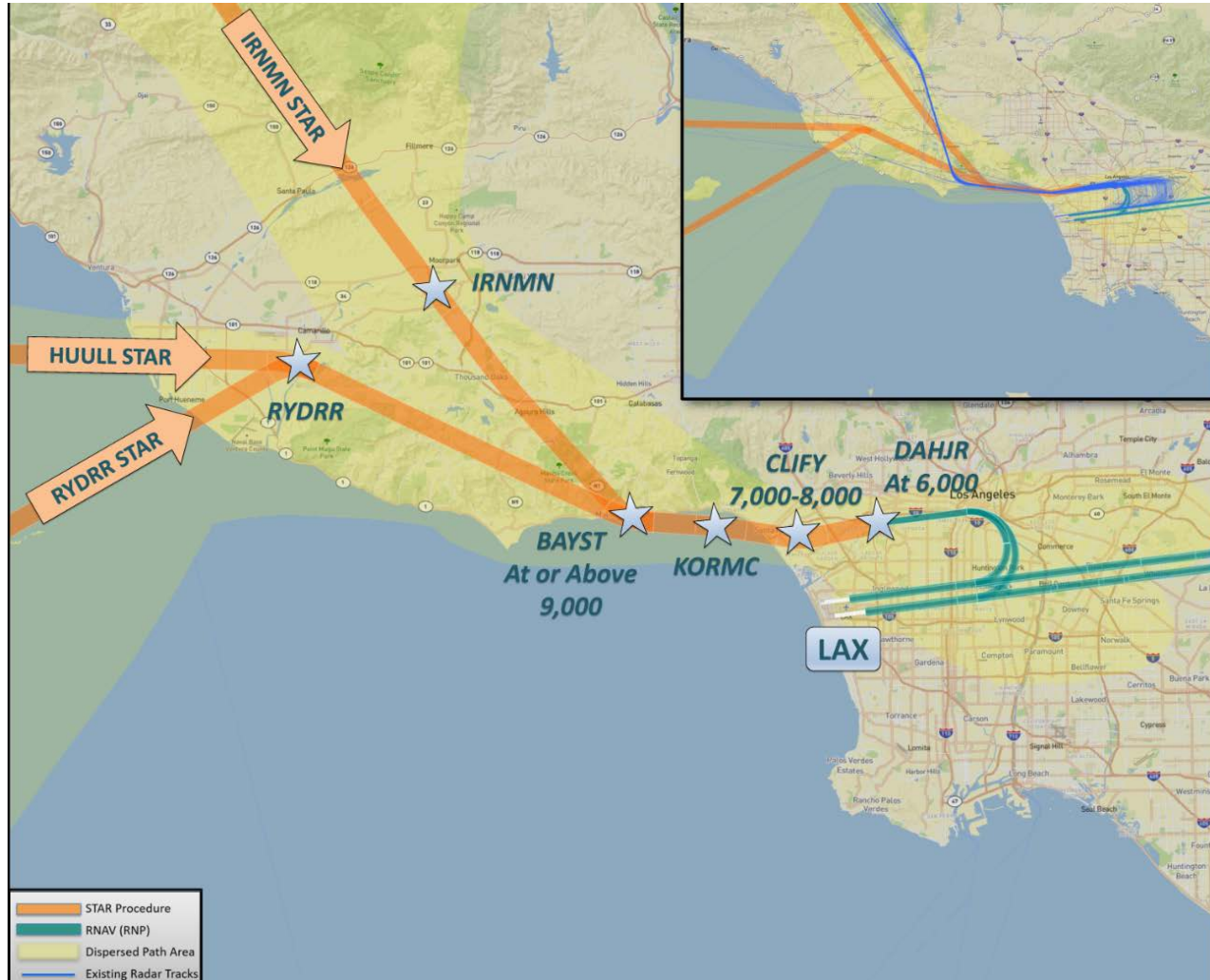
**May 10, 2017**

**LAX/Community Noise Roundtable**

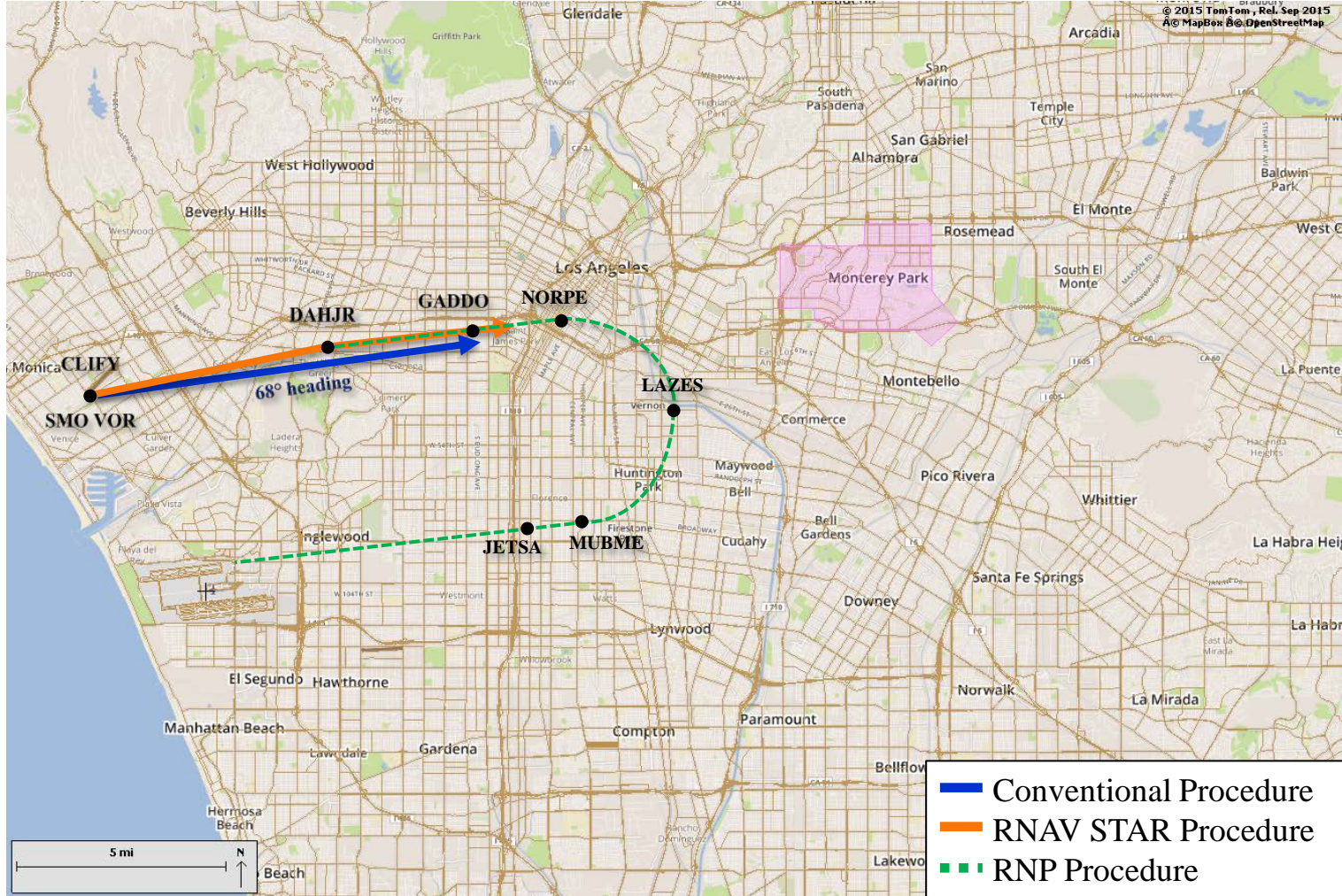
Metroplex procedures implemented in 3 phases:

- Phase 1: Nov 10, 2016 and Jan 5, 2017
- Phase 2: March 2, 2017 – RNP procedures published
- Phase 3: April 27, 2017 – RNAV STAR Procedures published  
(IRNMN, HUULL, and RYDRR)

# North Downwind RNAV/RNP Procedures

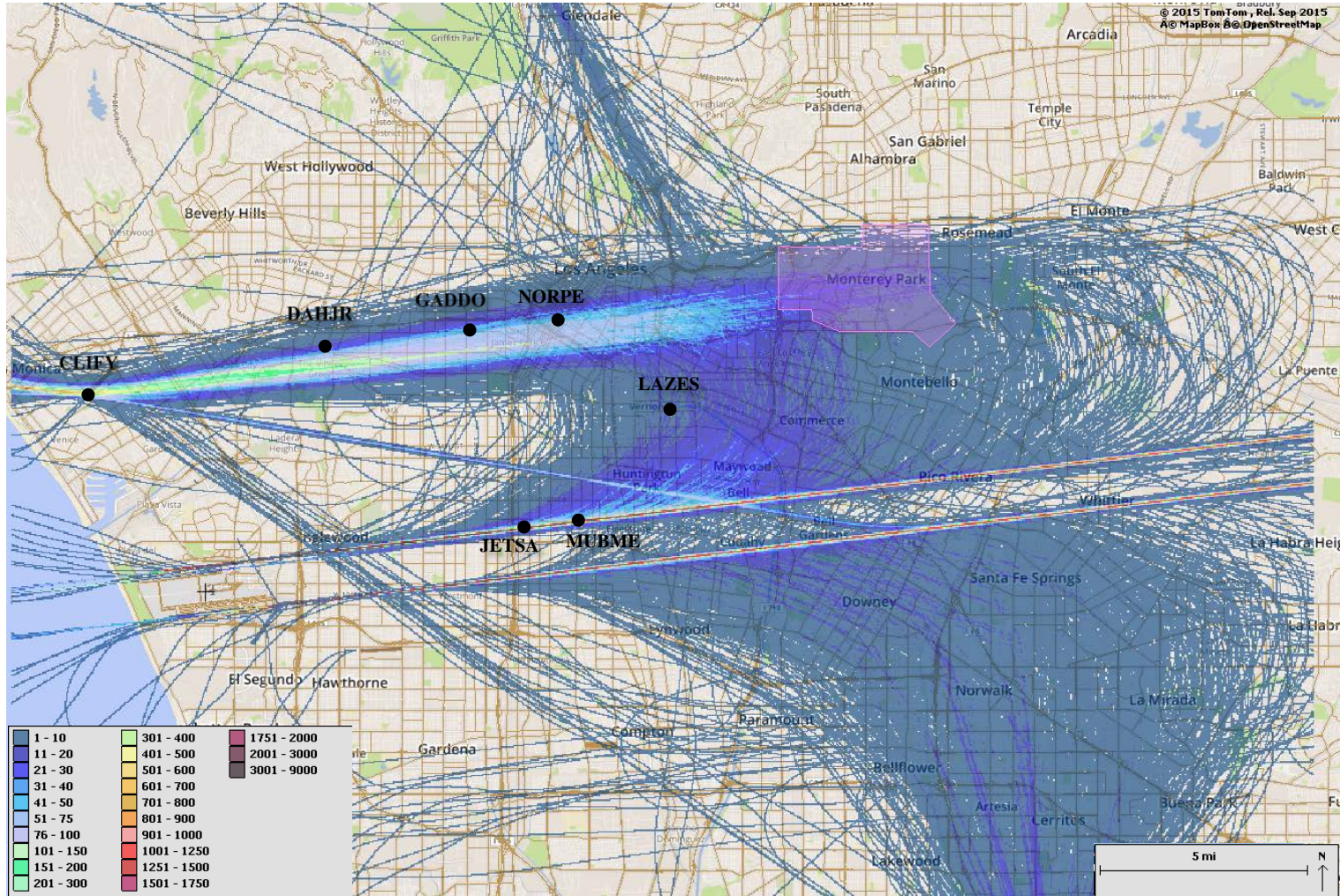


# Difference Between Existing and New Procedures



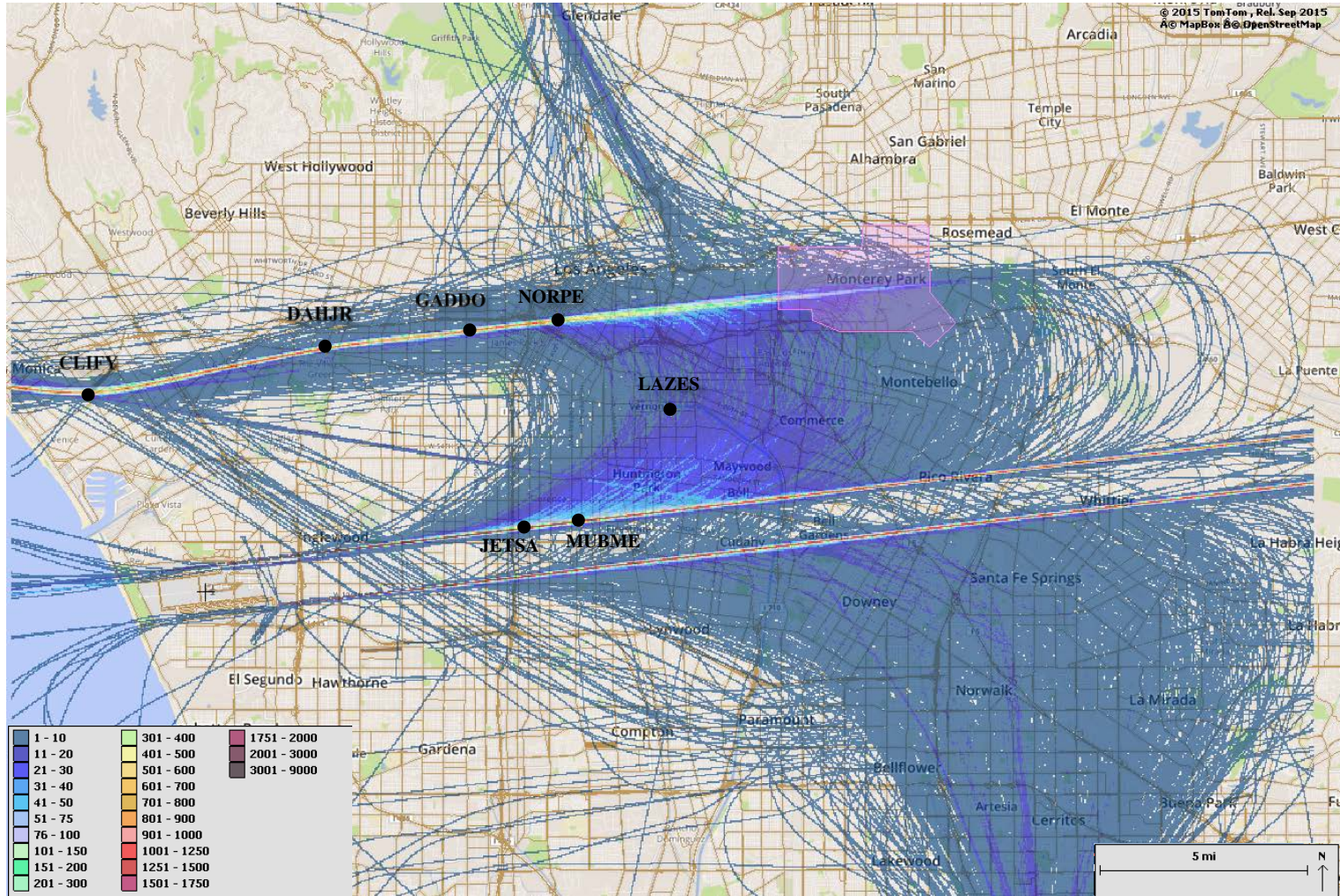


# Pre Phase 3 Metroplex Implementation – 1 week (April 20 - 26, 2017)





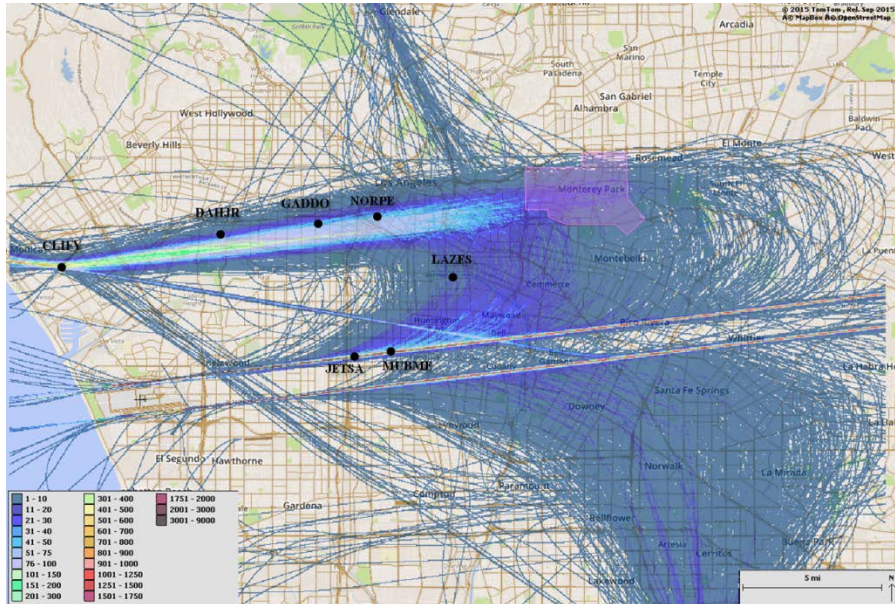
# Post Phase 3 Metroplex Implementation – 1 week (April 27 – May 3, 2017)



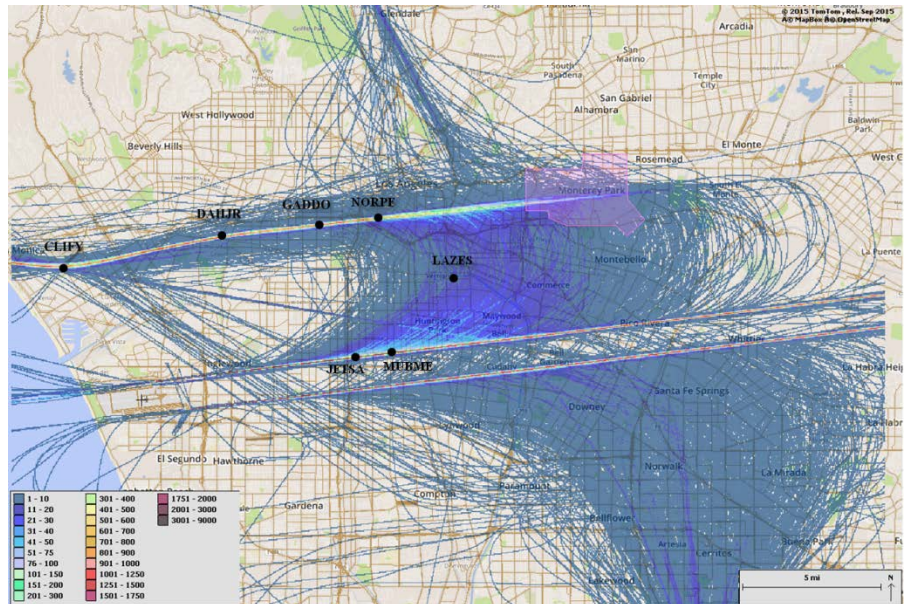


# Side-by-Side Comparison

## Before

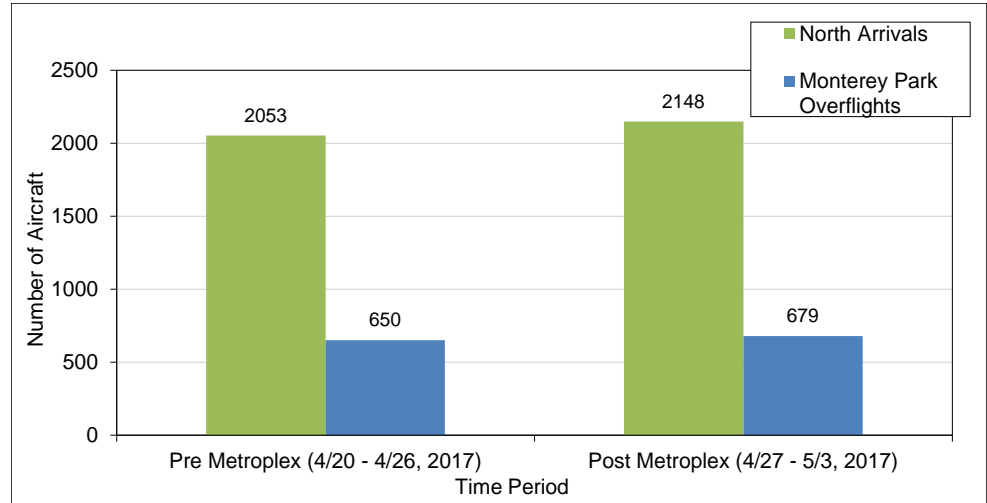


## After

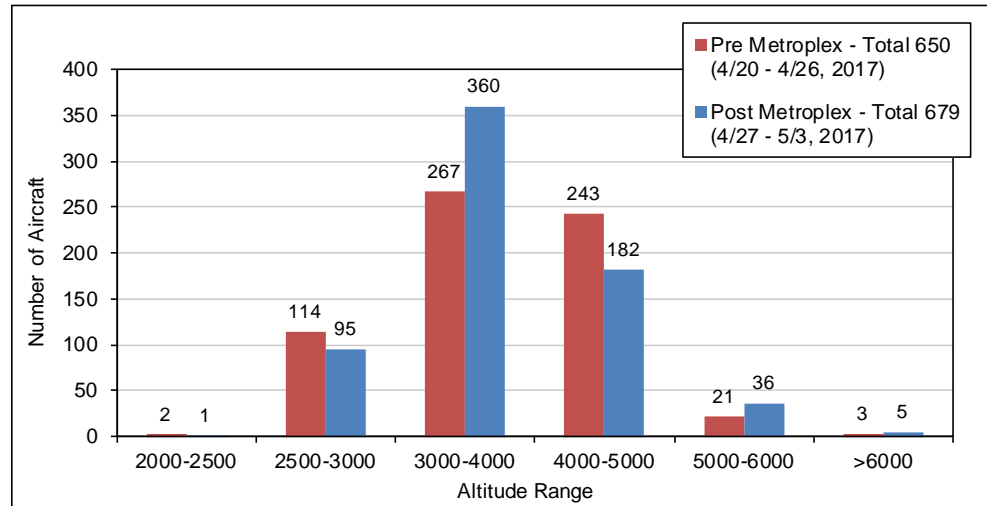


# Extended Downwind Approach – Monterey Park Overflights

Number of Operations



Altitude over Monterey Park





- RNAV STAR Procedures (IRNMN, HUULL, and RYDRR) are in use
  - Concentration of flight tracks along waypoints
- North Downwind RNP Arrival Procedure is not in use yet
- Extended Downwind Approach will most likely continue due to:
  - Runway 25R Closure – 36 days (4/20/17 – 5/25/17)
  - Delayed Flight Operations for Metroplex Phase 3 Implementation
  - Weather Conditions and/or Traffic Volume
- LAWA will continue to monitor and revisit these and other Metroplex procedures at a later date