

California State Airport Noise Standards Quarterly Report

First Quarter 2022



LOS ANGELES INTERNATIONAL AIRPORT

Los Angeles World Airports

May 5, 2022

TABLE OF CONTENTS

California State Airport Noise Standards Quarterly Report

1. Division of Aeronautics Form 617
2. Incompatible Land Use Data
3. Daily Aircraft CNEL Data
4. Runway Utilization Report
 - Summary of Runway Use
 - Summary of Runway Flow
5. Average Daily Runway Use by Aircraft Type
 - 24 Hour Average
 - Night-time Average (10pm – 7am)
6. Average Daily Runway Use by Aircraft Group
 - 24 Hour Average
 - Night-time Average (10pm – 7am)
7. Summary of Actions

Attachment

Noise contour map

**SUMMARY OF STATISTICAL INFORMATION
FOR
CALIFORNIA DEPARTMENT OF TRANSPORTATION**

Los Angeles International Airport
First Quarter 2022

1. Size of Noise Impact Area as defined in the Noise Standards (California Code of Regulations, Title 21, Chapter 2.5, Subchapter 6):

375.1 Acres

2. Estimated number of dwelling units included in the Noise Impact Area as defined in the Noise Standards:

4,760

3. Estimated number of people residing within the Noise Impact Area as defined in the Noise Standards:

18,327

4. Identification of aircraft type having highest takeoff noise level operating at this airport together with estimated number of operations by this aircraft type during the calendar quarter reporting period:

B747: 2,981

5. Total number of aircraft operations during the calendar quarter*:

132,887

6. Number of Air Carrier operations during the calendar quarter: (Not Mandatory)*

121,231

7. Percentage of Air Carrier operations by aircraft certificated under Federal Aviation Regulation (FAR) Part 36, Stage III. (Not Mandatory)

100 %

8. Estimated number of operations by General Aviation aircraft during the calendar quarter: (Not Mandatory)*

3,881

9. Estimated number of operations by Military aircraft during the calendar quarter: (Not Mandatory)*

88

LOS ANGELES INTERNATIONAL AIRPORT

Incompatible Land Use

Annual Noise Impact Accumulated by Noise Zone: CNEL 65, 70, and 75 +

1Q22	Total Cumulative Noise Impact Areas - All Jurisdictions											
	<i>CNEL 65 dB and Above</i>				<i>CNEL 70 dB and Above</i>				<i>CNEL 75 dB and Above</i>			
Land Use	Acres	Dwelling Units	Parcels	Population	Acres	Dwelling Units	Parcels	Population	Acres	Dwelling Units	Parcels	Population
Single Family	187.1	1,286	1,313	4,915	33.6	221	224	1,018	0.0	0	0	0
Multi-Family	167.4	3,462	1,040	13,378	36.2	660	250	2,709	0.0	0	0	0
Mobile Home	0.6	0	2	0	0.0	0	0	0	0.0	0	0	0
Schools	5.0	0	23	0	3.0	0	17	0	0.0	0	0	0
Churches	15.0	12	30	34	2.4	0	2	0	0.0	0	0	0
Hospitals	0.0	0	0	0	0.0	0	0	0	0.0	0	0	0
Total Incompatible	375.1	4,760	2,408	18,327	75.2	881	493	3,727	0.0	0	0	0

Note: Parcels and dwelling units may not match for single family land uses due to subdivision.
Parcels for multifamily land uses reflect only the common area parcel, except for condominiums.

Report Date: 05/03/2022

LOS ANGELES INTERNATIONAL AIRPORT

Incompatible Land Use

Annual Noise Impact Accumulated by Noise Zone: CNEL 65, 70, and 75 +

1Q22	Total Cumulative Noise Impact Areas - Athens											
	<i>CNEL 65 dB and Above</i>				<i>CNEL 70 dB and Above</i>				<i>CNEL 75 dB and Above</i>			
	Land Use	Acres	Dwelling Units	Parcels	Population	Acres	Dwelling Units	Parcels	Population	Acres	Dwelling Units	Parcels
Single Family	17.4	134	147	500	0.0	0	0	0	0.0	0	0	0
Multi-Family	17.6	320	124	1,143	0.0	0	0	0	0.0	0	0	0
Mobile Home	0.0	0	0	0	0.0	0	0	0	0.0	0	0	0
Schools	0.0	0	0	0	0.0	0	0	0	0.0	0	0	0
Churches	1.0	3	5	11	0.0	0	0	0	0.0	0	0	0
Hospitals	0.0	0	0	0	0.0	0	0	0	0.0	0	0	0
Total Incompatible	36.0	457	276	1,654	0.0	0	0	0	0.0	0	0	0

Note: Parcels and dwelling units may not match for single family land uses due to subdivision.
Parcels for multifamily land uses reflect only the common area parcel, except for condominiums.

Report Date: 05/03/2022

LOS ANGELES INTERNATIONAL AIRPORT

Incompatible Land Use

Annual Noise Impact Accumulated by Noise Zone: CNEL 65, 70, and 75 +

1Q22	Total Cumulative Noise Impact Areas - Del Aire											
	<i>CNEL 65 dB and Above</i>				<i>CNEL 70 dB and Above</i>				<i>CNEL 75 dB and Above</i>			
	Land Use	Acres	Dwelling Units	Parcels	Population	Acres	Dwelling Units	Parcels	Population	Acres	Dwelling Units	Parcels
Single Family	0.0	0	0	0	0.0	0	0	0	0.0	0	0	0
Multi-Family	0.0	0	0	0	0.0	0	0	0	0.0	0	0	0
Mobile Home	0.0	0	0	0	0.0	0	0	0	0.0	0	0	0
Schools	0.0	0	0	0	0.0	0	0	0	0.0	0	0	0
Churches	0.0	0	0	0	0.0	0	0	0	0.0	0	0	0
Hospitals	0.0	0	0	0	0.0	0	0	0	0.0	0	0	0
Total Incompatible	0.0	0	0	0	0.0	0	0	0	0.0	0	0	0

Note: Parcels and dwelling units may not match for single family land uses due to subdivision.
 Parcels for multifamily land uses reflect only the common area parcel, except for condominiums.

Report Date: 05/03/2022

LOS ANGELES INTERNATIONAL AIRPORT

Incompatible Land Use

Annual Noise Impact Accumulated by Noise Zone: CNEL 65, 70, and 75 +

1Q22	Total Cumulative Noise Impact Areas - City of El Segundo											
	<i>CNEL 65 dB and Above</i>				<i>CNEL 70 dB and Above</i>				<i>CNEL 75 dB and Above</i>			
	Land Use	Acres	Dwelling Units	Parcels	Population	Acres	Dwelling Units	Parcels	Population	Acres	Dwelling Units	Parcels
Single Family	57.4	375	377	983	3.1	19	19	44	0.0	0	0	0
Multi-Family	14.9	411	161	919	4.9	186	86	408	0.0	0	0	0
Mobile Home	0.0	0	0	0	0.0	0	0	0	0.0	0	0	0
Schools	0.0	0	0	0	0.0	0	0	0	0.0	0	0	0
Churches	0.7	0	2	0	0.0	0	0	0	0.0	0	0	0
Hospitals	0.0	0	0	0	0.0	0	0	0	0.0	0	0	0
Total Incompatible	73.0	786	540	1,903	8.0	205	105	453	0.0	0	0	0

Note: Parcels and dwelling units may not match for single family land uses due to subdivision.
Parcels for multifamily land uses reflect only the common area parcel, except for condominiums.

Report Date: 05/03/2022

LOS ANGELES INTERNATIONAL AIRPORT

Incompatible Land Use

Annual Noise Impact Accumulated by Noise Zone: CNEL 65, 70, and 75 +

1Q22	Total Cumulative Noise Impact Areas - City of Inglewood											
	<i>CNEL 65 dB and Above</i>				<i>CNEL 70 dB and Above</i>				<i>CNEL 75 dB and Above</i>			
	Land Use	Acres	Dwelling Units	Parcels	Population	Acres	Dwelling Units	Parcels	Population	Acres	Dwelling Units	Parcels
Single Family	59.4	412	419	1,680	0.8	6	6	26	0.0	0	0	0
Multi-Family	86.1	1,991	468	7,814	2.7	84	13	390	0.0	0	0	0
Mobile Home	0.6	0	2	0	0.0	0	0	0	0.0	0	0	0
Schools	0.0	0	0	0	0.0	0	0	0	0.0	0	0	0
Churches	8.0	6	13	13	2.1	0	1	0	0.0	0	0	0
Hospitals	0.0	0	0	0	0.0	0	0	0	0.0	0	0	0
Total Incompatible	154.1	2,409	902	9,507	5.6	90	20	416	0.0	0	0	0

Note: Parcels and dwelling units may not match for single family land uses due to subdivision.
Parcels for multifamily land uses reflect only the common area parcel, except for condominiums.

Report Date: 05/03/2022

LOS ANGELES INTERNATIONAL AIRPORT

Incompatible Land Use

Annual Noise Impact Accumulated by Noise Zone: CNEL 65, 70, and 75 +

1Q22	Total Cumulative Noise Impact Areas - Lennox											
	<i>CNEL 65 dB and Above</i>				<i>CNEL 70 dB and Above</i>				<i>CNEL 75 dB and Above</i>			
	Land Use	Acres	Dwelling Units	Parcels	Population	Acres	Dwelling Units	Parcels	Population	Acres	Dwelling Units	Parcels
Single Family	52.9	365	370	1,752	29.8	196	199	948	0.0	0	0	0
Multi-Family	48.8	740	287	3,501	28.6	390	151	1,911	0.0	0	0	0
Mobile Home	0.0	0	0	0	0.0	0	0	0	0.0	0	0	0
Schools	5.0	0	23	0	3.0	0	17	0	0.0	0	0	0
Churches	1.6	1	3	4	0.3	0	1	0	0.0	0	0	0
Hospitals	0.0	0	0	0	0.0	0	0	0	0.0	0	0	0
Total Incompatible	108.3	1,106	683	5,258	61.7	586	368	2,859	0.0	0	0	0

Note: Parcels and dwelling units may not match for single family land uses due to subdivision.
Parcels for multifamily land uses reflect only the common area parcel, except for condominiums.

Report Date: 05/03/2022

LOS ANGELES INTERNATIONAL AIRPORT

Incompatible Land Use

Annual Noise Impact Accumulated by Noise Zone: CNEL 65, 70, and 75 +

1Q22	Total Cumulative Noise Impact Areas - South and South East LA											
	<i>CNEL 65 dB and Above</i>				<i>CNEL 70 dB and Above</i>				<i>CNEL 75 dB and Above</i>			
	Land Use	Acres	Dwelling Units	Parcels	Population	Acres	Dwelling Units	Parcels	Population	Acres	Dwelling Units	Parcels
Single Family	0.0	0	0	0	0.0	0	0	0	0.0	0	0	0
Multi-Family	0.0	0	0	0	0.0	0	0	0	0.0	0	0	0
Mobile Home	0.0	0	0	0	0.0	0	0	0	0.0	0	0	0
Schools	0.0	0	0	0	0.0	0	0	0	0.0	0	0	0
Churches	2.4	1	6	4	0.0	0	0	0	0.0	0	0	0
Hospitals	0.0	0	0	0	0.0	0	0	0	0.0	0	0	0
Total Incompatible	2.4	1	6	4	0.0	0	0	0	0.0	0	0	0

Note: Parcels and dwelling units may not match for single family land uses due to subdivision.
Parcels for multifamily land uses reflect only the common area parcel, except for condominiums.

Report Date: 05/03/2022

LOS ANGELES INTERNATIONAL AIRPORT

Incompatible Land Use

Annual Noise Impact Accumulated by Noise Zone: CNEL 65, 70, and 75 +

1Q22	Total Cumulative Noise Impact Areas - Westchester/Playa Del Rey											
	<i>CNEL 65 dB and Above</i>				<i>CNEL 70 dB and Above</i>				<i>CNEL 75 dB and Above</i>			
	Land Use	Acres	Dwelling Units	Parcels	Population	Acres	Dwelling Units	Parcels	Population	Acres	Dwelling Units	Parcels
Single Family	0.0	0	0	0	0.0	0	0	0	0.0	0	0	0
Multi-Family	0.0	0	0	0	0.0	0	0	0	0.0	0	0	0
Mobile Home	0.0	0	0	0	0.0	0	0	0	0.0	0	0	0
Schools	0.0	0	0	0	0.0	0	0	0	0.0	0	0	0
Churches	1.3	1	1	2	0.0	0	0	0	0.0	0	0	0
Hospitals	0.0	0	0	0	0.0	0	0	0	0.0	0	0	0
Total Incompatible	1.3	1	1	2	0.0	0	0	0	0.0	0	0	0

Note: Parcels and dwelling units may not match for single family land uses due to subdivision.
Parcels for multifamily land uses reflect only the common area parcel, except for condominiums.

Report Date: 05/03/2022



January	PDR1	PDR2	ESG1	ESG2	ESG3	ESG5	DEL1*	WCH2	WCH3	WCH5	WCH6	ING1	ING2	ING3	ING6	ING8	LNX1	LNX2	LNX3	LNX4	ATH2	SLA1	SLA3	SLA5	SLA7
1 Sat	66	63	64	67	63	63	60	59	62	71	61	61	63	65	67	59	74	65	63	63	64	63	60	62	64
2 Sun	67	60	64	67	63	64	63	59	58	72	62	59	64	66	67	61	73	59	66	63	64	63	60	63	63
3 Mon	68	62	64	67	64	64	64	66	61	73	63	59	65	66	69	60	74	61	63	65	66	64	62	64	64
4 Tue	68	62	65	68	65	64	59	66	65	73	63	59	65	67	68	60	73	61	65	64	66	64	61	64	63
5 Wed	67	61	65	68	66	66	63	66	64	71	61	59	64	65	67	59	74	61	65	64	66	63	61	63	63
6 Thu	67	62	65	67	66	66	65	63	63	72	63	61	65	66	68	60	74	61	62	64	66	63	61	65	63
7 Fri	68	62	62	66	60	58	50	61	58	73	62	59	65	66	69	61	75	61		66	66	64	62	64	65
8 Sat	68	61	63	67	62	60	51	62	61	72	61	59	64	65	67	60	73	62	65	64	66	63	61	64	64
9 Sun	67	62	62	67	65	67	64	63	62	72	61	58	64	64	69	62	74	61	61	65	66	63	62	65	64
10 Mon	64	60	62	66	62	64	63	54	54	69	59	59	62	63	65	56	70	58	66	61	64	61	59	61	62
11 Tue	62	56	61	65	61	62	62	57	56	70	60	55	62	64	65	56	70	59	61	61	66	61	58	61	60
12 Wed	64	57	62	65	63	65	63	69	61	70	59	56	61	62	65	58	71	61	59	62	62	61	58	61	61
13 Thu	66	60	63	67	64	63	62	64	60	71	61	61	64	64	67	58	72	52		63	64	62	60	62	62
14 Fri	67	61	60	67	64	64	60	64	65	71	61	60	63	64	66	59	73	61	63	64	64	63	60	63	63
15 Sat	66	60	62	66	64	63	61	63	62	70	59	58	63	63	66	57	71	56		62	64	62	59	61	62
16 Sun	66	59	62	66	61	59	56	60	59	70	60	59	64	64	67	58	72	60	--	63	65	63	60	62	63
17 Mon	67	62	64	67	61	55	47	61	56	72	61	60	65	65	69	60	73	62		64	65	64	61	63	64
18 Tue	66	60	64	67	62	58	47	60	57	71	60	58	64	65	68	59	73	63		65	66	63	61	63	64
19 Wed	67	61	64	67	62	57	52	64	60	71	61	59	64	65	67	59	73	60	62	65	65	64	61	63	64
20 Thu	65	61	63	67	63	62	63	63	63	71	60	60	64	65	70	63	74	60	60	64	65	63	62	64	
21 Fri	64	58	64	67	62	60	60	61	60	68	62	62	62	62	65	61	71	66	65	65	64	60	63	59	--
22 Sat	63	57	65	65	62	61	60	53	52	69	59	61	61	63	67	61	73	66	66	67	65	61	64	60	--
23 Sun	65	58	62	66	64	63	60	57	57	71	60	59	63	65	66	57	72	58	60	62	65	63	60	63	--
24 Mon	67	62	63	66	64	64	60	65	62	71	61	65	64	65	68	59	74	61	60	64	64	64	62	64	--
25 Tue	67	62	62	66	61	58	52	62	62	71	60	63	64	65	70	60	76	62	60	66	67	63	63	65	65
26 Wed	66	61	63	66	65	64	59	62	62	70	61	64	62	64	68	60	75	62	61	66	66	62	62	64	64
27 Thu	65	59	63	67	64	64	63	62	62	71	61	60	62	64	66	57	73	60	60	63	63	61	59	62	62
28 Fri	63	57	61	65	62	62	61	59	57	68	57	56	60	65	63	56	70	59		59	61	59	56	60	59
29 Sat	62	55	60	64	60	60	58	57	53	68	57	57	59	62	65	56	71	59		61	62	59	57	62	60
30 Sun	67	61	62	66	62	61	58	64	63	72	61	60	66	67	68	59	73	62	61	64	64	63	60	62	64
31 Mon	66	61	65	67	63	60	55	63	59	73	61	59	64	65	67	58	73	59	58	63	65	60	60	62	63

* = Not Required for Title 21 Reporting



February	PDR1	PDR2	ESG1	ESG2	ESG3	ESG5	DEL1*	WCH2	WCH3	WCH5	WCH6	ING1	ING2	ING3	ING6	ING8	LNX1	LNX2	LNX3	LNX4	ATH2	SLA1	SLA3	SLA5	SLA7
1 Tue	65	61	63	67	62	59	55	60	60	71	60	59	63	64	66	58	72	58	59	63	64	63	60	63	62
2 Wed	63	56	--	65	61	60	59	59	58	69	58	58	61	62	65	57	71	56	59	62	63	61	58	61	61
3 Thu	65	60	--	65	62	60	58	59	61	70	60	60	63	63	66	58	72	59	59	62	63	61	61	61	61
4 Fri	64	58	61	65	62	61	61	60	58	70	59	59	62	64	65	58	71	61	60	61	67	63	58	61	62
5 Sat	64	58	61	64	61	60	61	62	61	69	58	57	61	62	64	55	72	58	58	62	62	59	58	60	60
6 Sun	65	58	62	65	62	63	62	64	64	70	61	60	63	63	65	57	71	58	58	62	63	61	58	62	60
7 Mon	64	59	63	65	63	63	61	63	62	69	59	58	62	62	64	56	70	57	59	60	61	60	57	60	60
8 Tue	63	56	63	65	64	64	64	60	59	69	60	63	62	64	67	56	72	58	59	62	59	60	58	61	61
9 Wed	64	57	62	65	62	63	62	63	61	69	58	65	61	62	67	58	73	61	58	64	65	60	59	63	62
10 Thu	66	60	63	66	63	63	62	63	62	71	61	61	63	64	69	58	73	62	59	64	64	64	60	63	63
11 Fri	66	59	64	66	64	64	63	64	62	71	61	62	64	65	66	59	72	59	58	63	64	62	60	63	62
12 Sat	63	57	64	65	63	63	65	61	61	70	59	59	62	63	65	56	71	61	59	61	64	61	57	61	61
13 Sun	64	58	63	65	63	62	61	59	62	71	60	61	64	65	68	61	72	62	58	63	68	61	58	62	64
14 Mon	68	63	65	66	63	62	55	62	63	73	62	60	65	66	67	60	74	59	58	64	65	64	60	64	63
15 Tue	66	60	65	67	63	58	56	60	55	71	60	59	63	64	67	60	72	59	59	63	64	62	60	62	62
16 Wed	67	61	64	67	62	59	58	62	59	71	60	63	64	65	67	59	73	59	57	63	65	63	61	63	63
17 Thu	67	61	64	67	64	61	57	63	65	72	61	61	64	65	68	60	73	62	57	64	65	63	61	64	63
18 Fri	67	61	63	66	64	63	61	62	57	72	61	60	66	65	68	60	74	60	60	65	65	64	61	64	64
19 Sat	68	62	62	65	62	62	59	61	61	72	60	60	64	65	68	62	75	62	58	65	65	63	61	64	64
20 Sun	68	62	64	67	61	55	47	60	61	73	62	61	66	66	69	60	75	62		66	67	65	62	66	65
21 Mon	68	63	64	67	61	55	46	62	60	72	62	60	65	66	69	59	73	60	59	64	66	64	61	63	64
22 Tue	68	62	66	67	63	58	53	59	60	71	61	62	65	66	69	62	75	62	60	66	66	64	62	64	65
23 Wed	66	61	64	67	62	58	56	55	50	70	59	62	62	64	69	61	75	62	--	65	66	62	62	64	65
24 Thu	65	59	63	66	62	60	58	57	57	70	59	60	63	64	66	57	72	58	--	62	63	62	59	62	62
25 Fri	66	60	64	66	63	60	58	63	61	71	60	60	64	65	66	60	72	59		63	64	63	60	63	63
26 Sat	64	58	62	66	62	62	60	60	60	70	59	59	62	63	66	56	72	58	60	62	63	61	59	61	61
27 Sun	64	57	61	65	64	66	61	60	61	71	59	58	62	63	66	55	73	58	61	63	64	58	58	63	61
28 Mon	64	59	62	65	63	64	63	60	63	70	60	59	62	63	65	55	72	59	60	61	62	60	58	61	60

* = Not Required for Title 21 Reporting



March	PDR1	PDR2	ESG1	ESG2	ESG3	ESG5	DEL1*	WCH2	WCH3	WCH5	WCH6	ING1	ING2	ING3	ING6	ING8	LNX1	LNX2	LNX3	LNX4	ATH2	SLA1	SLA3	SLA5	SLA7
1 Tue	65	59	64	66	65	64	63	63	61	70	59	58	63	64	66	59	72	58	60	62	63	61	58	62	65
2 Wed	66	60	64	66	64	63	63	63	63	71	60	59	63	64	66	57	73	60	60	63	64	62	59	62	62
3 Thu	66	60	63	65	65	58	58	63	61	73		64	66	66	66	59	73	68	68	68	61	63	62	59	60
4 Fri	69	62	64	66	61	56	59	60	62	73			66	67	71	67	76	72	68	70	68	66	64	66	65
5 Sat	69	62	65	68	63	61	59	58	59	72	59		65	66	68	61	74	59	61	65	64	64	61	64	63
6 Sun	67	61	65	69	64	60	54	59	58	72	61	60	65	66	67	59	72	58	61	63	64	64	61	62	63
7 Mon	66	61	65	68	63	61	58	64	64	72	63	60	64	65	67	58	73	59	60	63	64	63	60	62	62
8 Tue	65	59	66	66	62	61	60	60	62	71	61	60	63	65	66	57	72	60	61	62	64	62	59	62	62
9 Wed	67	62	65	68	63	57	46	64	61	72	62	59	65	65	67	59	73	61	60	64	65	64	61	63	63
10 Thu	67	61	66	68	63	59	52	64	62	72	61	60	65	66	68	59	74	60	62	65	65	64	61	64	63
11 Fri	67	61	63	66	62	64	54	63	60	72	61	60	64	66	68	62	74	63	61	65	67	63	61	65	63
12 Sat	67	61	64	66	63	63	52	62	62	72	61	60	64	65	67	58	74	60	61	64	65	63	60	63	62
13 Sun	68	62	65	67	62	56	44	64	62	74	63	61	66	67	70	61	76	62	63	66	67	65	63	65	65
14 Mon	68	62	65	67	62	55	45	65	61	72	62	60	65	66	67	59	73	60	61	63	65	63	60	63	63
15 Tue	67	61	64	67	61	57	49	64	62	73	62	61	65	66	68	60	73	61	60	64	65	64	61	64	64
16 Wed	66	59	63	67	64	60	63	61	61	72	61	60	64	65	68	60	73	62	60	64	65	63	61	64	64
17 Thu	67	62	65	68	65	63	58	62	62	73	62	62	65	66	67	58	73	61	63	64	65	63	60	63	63
18 Fri	68	62	65	68	64	61	56	64	65	73	62	61	65	66	68	61	74	61	62	65	65	64	61	64	64
19 Sat	68	62	--	67	62	57	43	62	60	72	62	61	65	66	67	59	73	60	61	63	65	64	61	63	63
20 Sun	68	62	--	68	63	61	60	59	60	73	62	62	66	66	69	61	75	61	61	66	66	64	62	65	64
21 Mon	69	63	--	67	62	60	56	65	64	73	62	61	65	67	68	61	74	61	61	65	66	64	62	65	65
22 Tue	68	62	65	68	65	63	56	65	65	72	63	62	65	67	69	60	75	61	62	66	67	64	62	65	65
23 Wed	68	62	64	67	65	63	58	62	64	72	61	61	64	65	69	61	75	62	63	66	66	63	62	66	64
24 Thu	68	62	66	68	66	64	61	64	64	73	63	62	66	67	69	60	75	61	64	66	66	64	61	64	63
25 Fri	68	61	64	66	62	58	49	61	63	73	62	61	66	67	70	61	76	61	63	67	67	64	63	66	65
26 Sat	68	61	63	66	60	57	68	60	56	73	62	60	65	66	69	60	75	62	62	66	66	64	62	65	64
27 Sun	69	63	64	67	61	54	49	63	61	73	64	61	66	67	69	62	75	64	63	66	67	65	63	65	65
28 Mon	68	63	64	67	61	55	56	62	63	73	66	64	67	67	69	64	75	67		67	66	65	63	65	65
29 Tue	67	61	65	68	64	60	54	62	61	72	62	60	65	66	68	60	73	61	--	64	65	64	62	64	64
30 Wed	68	62	66	67	62	56	46	61	58	72	62	60	65	66	67	59	73	60	--	64	65	64	61	64	64
31 Thu	68	62	64	67	62	57	44	61	56	73	62	60	65	66	69	59	74	59	--	65	65	64	62	63	64

* = Not Required for Title 21 Reporting



Runway Utilization Report
Summary of Runway Use (Average)
 Los Angeles International Airport

Period : 01/01/2022 to 03/31/2022

Airline : ALL

Aircraft : ALL

Time Period	Percent Daily Operations Per Runway								Average Operations	Runway Complex		Runway Flow		In Board	Out Board	
	06L	06R	07L	07R	24L	24R	25L	25R		South	North	West	East			
Departures																
Total Hours																
24 Hours	<1%	<1%	<1%	<1%	38%	<1%	6%	55%	733	62%	38%	99%	1%	94%	6%	
CNEL Hours																
0700 - 1900	<1%	<1%	<1%	<1%	42%	<1%	6%	51%	491	58%	42%	99%	<1 %	94%	6%	
1900 - 2200	0%	1%	1%	<1%	41%	0%	7%	49%	93	58%	42%	98%	2%	93%	7%	
2200 - 0700	0%	<1%	2%	<1%	23%	<1%	3%	71%	150	77%	23%	98%	3%	96%	4%	
Contra Hours																
Midnight - 0630	0%	<1%	2%	<1%	10%	1%	5%	81%	72	89%	11%	97%	3%	94%	6%	
0630 - Midnight	<1%	<1%	<1%	<1%	41%	<1%	6%	52%	662	59%	41%	99%	1%	94%	6%	
Arrivals																
Total Hours																
24 Hours	1%	4%	<1%	<1%	<1%	43%	50%	<1%	731	51%	49%	94%	6%	5%	95%	
CNEL Hours																
0700 - 1900	<1%	0%	0%	<1%	<1%	47%	51%	<1%	486	52%	48%	99%	<1 %	1%	99%	
1900 - 2200	1%	0%	0%	1%	<1%	46%	51%	<1%	126	53%	47%	98%	2%	<1%	99%	
2200 - 0700	3%	23%	<1%	2%	<1%	26%	43%	<1%	120	47%	53%	71%	29%	25%	75%	
Contra Hours																
Midnight - 0630	7%	58%	2%	3%	1%	6%	22%	<1%	47	28%	72%	30%	70%	62%	38%	
0630 - Midnight	<1%	<1%	0%	<1%	<1%	46%	51%	<1%	684	53%	47%	99%	1%	1%	99%	

All values are rounded to the nearest whole number.



Runway Utilization Report
 Summary of Runway Flow (Average)
 Los Angeles International Airport

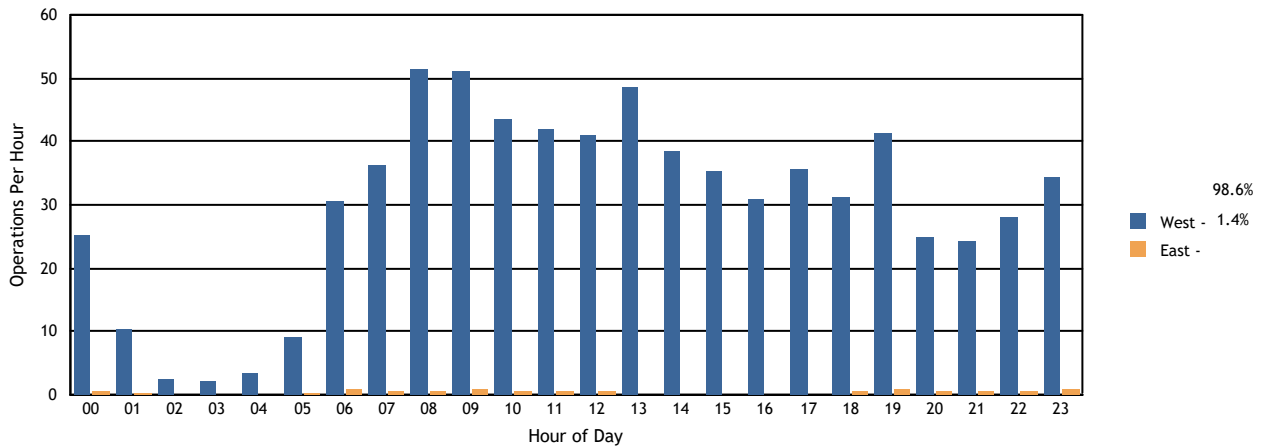
Period: 01/01/2022 to 03/31/2022

Airline : ALL
 Aircraft : ALL

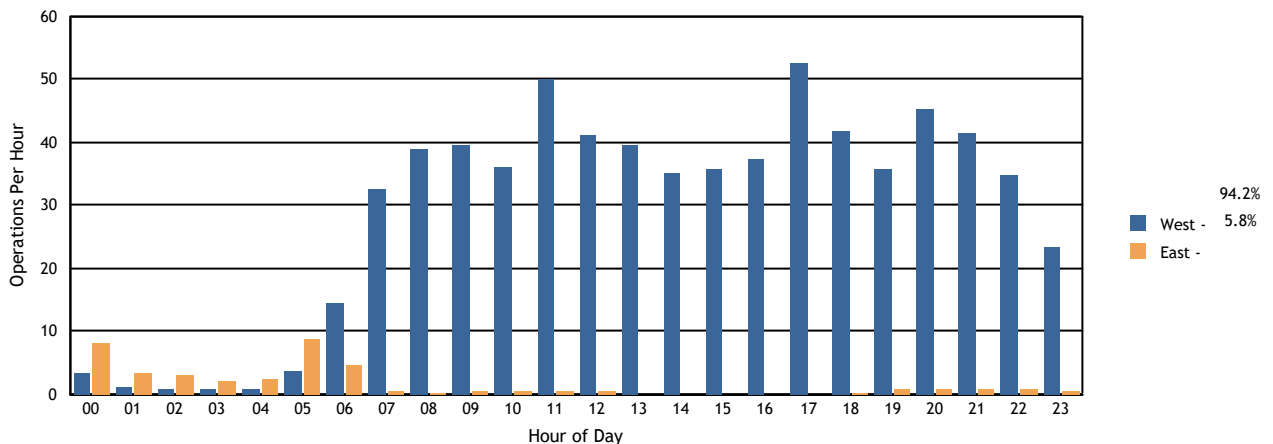
Time Period	Departures			Arrivals			Departures		Arrivals	
	West	East	Average	West	East	Average	West	East	West	East
Total Hours										
24 Hours	723	10	733	689	42	731	99%	1%	94%	6%
CNEL Hours										
0700-1900	486	4	491	481	4	486	99%	<1%	99%	<1%
1900-2200	91	2	93	123	3	126	98%	2%	98%	2%
2200-0700	146	4	150	85	35	120	98%	3%	71%	29%
Contra Hours										
Midnight - 0630	70	2	72	14	33	47	97%	3%	30%	70%
0630 - Midnight	653	8	662	675	9	684	99%	1%	99%	1%

All percentages are rounded to the nearest whole number.

Departures Per Hour by Operational Direction



Arrivals Per Hour by Operational Direction



**LAX Average Daily Runway Use By Aircraft Type - 24 Hours
First Quarter 2022**

Arrivals (Average Daily Operations)								
Aircraft Type	06L	06R	07L	07R	24L	24R	25L	25R
A20N	0.18	0.70	0.00	0.19	0.01	2.40	10.11	0.09
A21N	0.23	1.34	0.00	0.33	0.04	7.38	17.87	0.33
A306	0.02	0.49	0.04	0.02	0.00	0.00	0.94	0.03
A319	0.19	0.86	0.00	0.19	0.03	3.57	14.16	0.29
A320	0.28	1.40	0.00	0.47	0.14	14.98	31.06	0.62
A321	0.73	2.77	0.01	0.84	0.14	22.32	48.96	0.72
A332	0.16	0.88	0.00	0.00	0.09	3.96	2.66	0.03
A333	0.00	0.00	0.00	0.00	0.00	0.31	0.30	0.00
A343	0.00	0.00	0.00	0.00	0.00	0.01	0.07	0.00
A359	0.13	0.41	0.00	0.02	0.06	7.96	3.18	0.01
A35K	0.03	0.02	0.00	0.00	0.01	1.76	0.41	0.00
A388	0.01	0.01	0.00	0.00	0.00	1.66	0.01	0.00
ASTR	0.00	0.00	0.00	0.00	0.00	0.01	0.08	0.00
B350	0.01	0.01	0.00	0.01	0.06	1.80	0.92	0.01
B38M	0.27	0.56	0.00	0.06	0.14	13.93	3.89	0.07
B39M	0.12	0.91	0.00	0.16	0.01	3.77	7.67	0.14
B722	0.00	0.01	0.00	0.00	0.00	0.00	0.00	0.00
B733	0.00	0.00	0.00	0.00	0.00	0.00	0.02	0.00
B734	0.00	0.00	0.01	0.00	0.00	0.01	0.08	0.00
B735	0.00	0.00	0.00	0.00	0.00	0.02	0.01	0.00
B737	0.36	0.43	0.00	0.07	0.23	22.32	3.38	0.08
B738	0.64	1.31	0.02	0.50	0.33	35.51	34.24	0.71
B739	0.48	1.13	0.01	0.52	0.14	25.58	23.66	0.54
B744	0.20	1.46	0.08	0.28	0.00	0.20	9.57	0.06
B748	0.08	0.63	0.00	0.13	0.00	1.09	2.80	0.00
B752	0.52	2.61	0.13	0.27	0.33	8.73	10.72	0.11
B753	0.17	0.67	0.00	0.06	0.07	4.90	4.99	0.13
B762	0.01	0.11	0.01	0.03	0.00	0.00	1.90	0.00
B763	0.27	3.00	0.59	0.42	0.03	2.57	13.70	0.14
B764	0.03	0.03	0.00	0.03	0.03	3.59	1.28	0.00
B772	0.03	0.11	0.00	0.02	0.01	0.78	3.39	0.04
B77L	0.29	1.71	0.07	0.24	0.00	0.23	10.39	0.10
B77W	0.21	1.13	0.01	0.08	0.04	17.64	6.52	0.07
B788	0.07	0.17	0.00	0.04	0.00	0.99	1.71	0.02
B789	0.19	1.03	0.00	0.12	0.08	7.52	8.92	0.10
B78X	0.00	0.02	0.00	0.06	0.00	0.99	2.88	0.06
BCS1	0.00	0.01	0.00	0.02	0.01	1.81	1.14	0.01
BCS3	0.03	0.00	0.00	0.00	0.01	0.90	0.71	0.01
BE20	0.00	0.00	0.00	0.00	0.00	0.10	0.10	0.00
BE30	0.00	0.00	0.00	0.00	0.00	0.00	0.01	0.00

Departures (Average Daily Operations)								
Aircraft Type	06L	06R	07L	07R	24L	24R	25L	25R
A20N	0.01	0.07	0.20	0.00	2.88	0.01	0.17	10.38
A21N	0.00	0.10	0.30	0.00	4.51	0.00	0.29	22.33
A306	0.00	0.00	0.00	0.00	0.00	0.00	0.44	1.14
A319	0.00	0.09	0.27	0.00	4.46	0.06	0.37	14.16
A320	0.01	0.11	0.58	0.00	12.54	0.07	0.56	35.17
A321	0.00	0.40	0.77	0.00	17.06	0.19	1.07	57.13
A332	0.00	0.01	0.10	0.00	6.48	0.00	0.08	1.11
A333	0.00	0.00	0.00	0.00	0.29	0.00	0.03	0.29
A343	0.00	0.00	0.00	0.00	0.00	0.00	0.04	0.04
A359	0.00	0.03	0.16	0.00	8.04	0.03	0.09	3.46
A35K	0.00	0.00	0.03	0.00	1.18	0.00	0.00	1.03
A388	0.00	0.01	0.00	0.00	1.62	0.00	0.08	0.00
ASTR	0.00	0.00	0.00	0.00	0.00	0.00	0.03	0.06
B350	0.00	0.02	0.00	0.00	0.30	0.01	0.83	1.64
B38M	0.00	0.08	0.12	0.01	15.74	0.04	0.02	2.86
B39M	0.00	0.03	0.16	0.00	2.51	0.04	0.11	9.93
B722	0.00	0.00	0.00	0.00	0.00	0.00	0.00	0.01
B733	0.00	0.00	0.00	0.00	0.00	0.00	0.01	0.01
B734	0.00	0.00	0.00	0.00	0.00	0.00	0.01	0.09
B735	0.00	0.00	0.00	0.00	0.00	0.00	0.00	0.03
B737	0.00	0.18	0.13	0.00	23.96	0.32	0.16	2.13
B738	0.00	0.47	0.58	0.00	38.81	0.18	0.68	32.80
B739	0.00	0.27	0.60	0.00	21.23	0.09	0.36	29.66
B744	0.00	0.03	0.16	0.01	0.09	0.00	3.42	8.11
B748	0.00	0.00	0.00	0.11	1.02	0.00	3.50	0.09
B752	0.00	0.10	0.18	0.00	13.08	0.04	0.91	9.10
B753	0.00	0.06	0.10	0.00	4.06	0.00	0.14	6.67
B762	0.00	0.00	0.04	0.00	0.00	0.00	0.34	1.69
B763	0.00	0.07	0.27	0.00	3.08	0.01	4.49	12.94
B764	0.00	0.02	0.03	0.00	4.40	0.00	0.02	0.54
B772	0.00	0.01	0.06	0.00	0.87	0.00	0.03	3.43
B77L	0.00	0.01	0.14	0.00	0.03	0.00	5.12	7.77
B77W	0.00	0.11	0.26	0.00	14.47	0.02	0.19	10.71
B788	0.00	0.00	0.00	0.00	1.87	0.00	0.01	1.13
B789	0.00	0.06	0.23	0.00	7.10	0.01	0.09	10.49
B78X	0.00	0.02	0.01	0.00	0.70	0.00	0.04	3.23
BCS1	0.00	0.00	0.03	0.00	2.57	0.00	0.00	0.43
BCS3	0.00	0.01	0.04	0.00	1.08	0.00	0.01	0.53
BE20	0.00	0.00	0.00	0.00	0.00	0.00	0.02	0.18
BE36	0.00	0.00	0.00	0.00	0.00	0.00	0.00	0.01

LAX Average Daily Runway Use By Aircraft Type - 24 Hours First Quarter 2022

Arrivals (Average Daily Operations)								
Aircraft Type	06L	06R	07L	07R	24L	24R	25L	25R
BE36	0.00	0.00	0.00	0.00	0.00	0.01	0.00	0.00
BE40	0.00	0.00	0.00	0.00	0.00	0.06	0.29	0.00
BE99	0.02	0.02	0.00	0.00	0.00	0.32	0.32	0.00
BE9L	0.00	0.00	0.00	0.00	0.00	0.01	0.04	0.00
C150	0.00	0.00	0.00	0.00	0.00	0.00	0.01	0.00
C172	0.00	0.00	0.00	0.00	0.00	0.04	0.03	0.00
C208	0.00	0.00	0.00	0.06	0.00	0.00	2.90	0.36
C25A	0.01	0.01	0.00	0.00	0.01	0.13	0.29	0.01
C25B	0.00	0.01	0.00	0.01	0.00	0.20	0.67	0.00
C25C	0.00	0.00	0.00	0.00	0.00	0.04	0.10	0.00
C525	0.00	0.01	0.00	0.00	0.00	0.07	0.17	0.00
C550	0.00	0.00	0.00	0.00	0.00	0.04	0.13	0.00
C560	0.00	0.00	0.00	0.00	0.00	0.02	0.31	0.00
C56X	0.02	0.01	0.00	0.00	0.00	0.44	1.30	0.00
C650	0.00	0.00	0.00	0.00	0.00	0.00	0.07	0.00
C680	0.00	0.00	0.00	0.01	0.00	0.13	0.56	0.01
C68A	0.01	0.00	0.00	0.00	0.00	0.40	1.59	0.01
C700	0.00	0.00	0.00	0.00	0.00	0.16	0.48	0.00
C750	0.00	0.00	0.00	0.01	0.00	0.28	0.96	0.01
CL30	0.01	0.04	0.00	0.04	0.02	0.57	1.67	0.01
CL35	0.00	0.02	0.00	0.01	0.00	0.63	1.69	0.00
CL60	0.03	0.01	0.00	0.06	0.01	1.33	2.06	0.02
CRJ2	0.07	0.02	0.00	0.02	0.07	9.30	3.36	0.02
CRJ7	0.09	0.06	0.00	0.07	0.03	8.87	10.92	0.23
CRJ9	0.01	0.00	0.00	0.00	0.00	0.31	0.02	0.00
DC10	0.02	0.23	0.03	0.02	0.00	0.00	0.74	0.00
E120	0.00	0.00	0.00	0.00	0.00	0.01	0.00	0.00
E135	0.00	0.00	0.00	0.01	0.00	0.24	1.30	0.00
E145	0.01	0.01	0.00	0.00	0.00	0.08	0.10	0.00
E170	0.57	0.02	0.00	0.23	0.03	15.19	7.21	0.19
E190	0.00	0.00	0.00	0.00	0.00	0.00	0.21	0.00
E35L	0.00	0.00	0.00	0.00	0.00	0.04	0.31	0.01
E50P	0.00	0.00	0.00	0.00	0.00	0.00	0.03	0.00
E545	0.01	0.00	0.00	0.02	0.00	0.12	0.41	0.00
E550	0.00	0.00	0.00	0.01	0.00	0.06	0.37	0.00
E55P	0.03	0.00	0.00	0.02	0.00	0.54	1.40	0.03
E75L	0.33	0.39	0.00	0.18	0.23	51.48	17.89	0.34
E75S	0.01	0.01	0.00	0.01	0.00	1.08	0.41	0.00
EA50	0.00	0.00	0.00	0.00	0.00	0.01	0.00	0.00
F2TH	0.01	0.04	0.01	0.00	0.00	0.20	0.92	0.00

Departures (Average Daily Operations)								
Aircraft Type	06L	06R	07L	07R	24L	24R	25L	25R
BE40	0.00	0.00	0.01	0.00	0.01	0.00	0.09	0.22
BE99	0.00	0.00	0.01	0.00	0.02	0.00	0.01	0.62
BE9L	0.00	0.00	0.00	0.00	0.02	0.00	0.00	0.03
C17	0.00	0.00	0.00	0.00	0.01	0.00	0.00	0.00
C172	0.00	0.00	0.00	0.00	0.01	0.00	0.02	0.02
C182	0.00	0.00	0.00	0.00	0.00	0.00	0.00	0.01
C208	0.00	0.00	0.03	0.00	0.00	0.00	0.04	3.23
C25A	0.00	0.00	0.00	0.00	0.02	0.00	0.13	0.32
C25B	0.00	0.00	0.02	0.00	0.02	0.00	0.18	0.66
C25C	0.00	0.00	0.00	0.00	0.00	0.00	0.06	0.09
C525	0.00	0.00	0.00	0.00	0.02	0.00	0.06	0.17
C550	0.00	0.00	0.00	0.00	0.00	0.00	0.06	0.12
C560	0.00	0.00	0.00	0.00	0.02	0.00	0.10	0.21
C56X	0.00	0.01	0.01	0.00	0.01	0.00	0.83	0.90
C650	0.00	0.00	0.00	0.00	0.00	0.00	0.01	0.06
C680	0.00	0.00	0.00	0.00	0.02	0.00	0.21	0.48
C68A	0.00	0.00	0.02	0.00	0.07	0.00	0.79	1.12
C700	0.00	0.01	0.00	0.00	0.00	0.00	0.26	0.37
C750	0.00	0.01	0.02	0.00	0.06	0.00	0.46	0.72
CL30	0.00	0.07	0.02	0.00	0.08	0.00	0.72	1.50
CL35	0.00	0.00	0.00	0.00	0.04	0.00	1.10	1.23
CL60	0.00	0.08	0.04	0.00	0.28	0.01	0.84	2.29
CRJ2	0.00	0.08	0.02	0.00	3.39	0.00	0.34	9.09
CRJ7	0.00	0.11	0.07	0.00	2.98	0.01	0.10	17.07
CRJ9	0.00	0.00	0.00	0.00	0.12	0.00	0.00	0.22
DC10	0.00	0.00	0.01	0.00	0.00	0.00	0.23	0.83
E120	0.00	0.00	0.00	0.00	0.00	0.00	0.01	0.00
E135	0.00	0.01	0.00	0.00	0.00	0.00	0.66	0.89
E145	0.00	0.00	0.00	0.00	0.00	0.00	0.07	0.13
E170	0.00	0.43	0.29	0.00	9.69	0.02	0.19	12.87
E190	0.00	0.00	0.00	0.00	0.00	0.00	0.04	0.16
E35L	0.00	0.00	0.00	0.00	0.00	0.00	0.16	0.21
E50P	0.00	0.00	0.00	0.00	0.00	0.00	0.01	0.01
E545	0.00	0.02	0.00	0.00	0.03	0.00	0.18	0.34
E550	0.00	0.00	0.00	0.00	0.01	0.00	0.13	0.29
E55P	0.00	0.02	0.02	0.00	0.08	0.00	0.69	1.23
E75L	0.00	0.32	0.21	0.00	41.06	0.09	0.08	29.38
E75S	0.00	0.00	0.01	0.00	1.53	0.00	0.00	0.01
EA50	0.00	0.00	0.00	0.00	0.01	0.00	0.00	0.00
F2TH	0.00	0.00	0.00	0.00	0.02	0.00	0.51	0.69

LAX Noise Management
Source: LAX ANOMS, based on available FAA radar flight track data.

LAX Average Daily Runway Use By Aircraft Type - 24 Hours
First Quarter 2022

Arrivals (Average Daily Operations)								
Aircraft Type	06L	06R	07L	07R	24L	24R	25L	25R
F900	0.00	0.00	0.00	0.00	0.01	0.11	0.61	0.00
FA20	0.00	0.00	0.00	0.00	0.00	0.00	0.03	0.00
FA50	0.00	0.00	0.00	0.00	0.00	0.04	0.12	0.00
FA7X	0.00	0.00	0.00	0.01	0.00	0.11	0.34	0.00
FA8X	0.00	0.00	0.00	0.00	0.00	0.02	0.07	0.00
G150	0.00	0.01	0.00	0.01	0.00	0.09	0.13	0.00
G280	0.00	0.00	0.00	0.01	0.01	0.03	0.30	0.00
GA5C	0.00	0.00	0.00	0.00	0.00	0.00	0.07	0.00
GA6C	0.00	0.00	0.00	0.00	0.00	0.04	0.13	0.00
GALX	0.00	0.01	0.00	0.00	0.00	0.09	0.31	0.00
GL5T	0.00	0.02	0.00	0.02	0.00	0.13	0.43	0.00
GL7T	0.00	0.01	0.00	0.00	0.01	0.14	0.41	0.00
GLEX	0.01	0.00	0.01	0.01	0.01	0.56	1.72	0.01
GLF4	0.00	0.02	0.00	0.00	0.01	0.44	2.08	0.03
GLF5	0.00	0.03	0.01	0.04	0.02	0.47	2.02	0.04
GLF6	0.00	0.02	0.00	0.03	0.00	0.34	1.31	0.01
H25B	0.00	0.06	0.00	0.03	0.01	0.16	1.07	0.00
H25C	0.00	0.00	0.00	0.00	0.00	0.01	0.03	0.00
HA4T	0.00	0.00	0.00	0.00	0.00	0.01	0.03	0.00
HDJT	0.00	0.00	0.00	0.00	0.00	0.01	0.09	0.00
J328	0.00	0.00	0.00	0.01	0.00	0.00	0.03	0.00
LJ35	0.00	0.00	0.00	0.00	0.00	0.01	0.13	0.00
LJ40	0.00	0.00	0.00	0.00	0.00	0.00	0.01	0.00
LJ45	0.00	0.00	0.00	0.01	0.01	0.09	0.44	0.00
LJ60	0.00	0.02	0.00	0.01	0.01	0.01	0.30	0.00
LJ75	0.00	0.00	0.00	0.00	0.00	0.01	0.06	0.00
MD11	0.06	0.47	0.01	0.09	0.00	0.07	3.00	0.02
P28A	0.00	0.00	0.00	0.00	0.00	0.01	0.00	0.00
PA46	0.00	0.00	0.00	0.00	0.00	0.03	0.00	0.00
PC12	0.01	0.01	0.00	0.04	0.02	0.79	0.48	0.01
PC24	0.00	0.00	0.00	0.00	0.00	0.01	0.04	0.00
PRM1	0.00	0.00	0.00	0.00	0.00	0.01	0.06	0.00
S22T	0.00	0.00	0.00	0.00	0.00	0.00	0.02	0.00
SR20	0.00	0.00	0.00	0.00	0.00	0.00	0.01	0.00
SR22	0.00	0.00	0.00	0.00	0.00	0.00	0.01	0.00
A346	0.01	0.01	0.00	0.00	0.00	0.03	0.02	0.00
SF50	0.00	0.00	0.00	0.00	0.00	0.01	0.02	0.00
LJ55	0.00	0.00	0.00	0.00	0.00	0.00	0.04	0.00
C425	0.00	0.00	0.00	0.00	0.00	0.01	0.00	0.00
BE35	0.00	0.00	0.00	0.00	0.00	0.01	0.00	0.00

Departures (Average Daily Operations)								
Aircraft Type	06L	06R	07L	07R	24L	24R	25L	25R
F900	0.00	0.00	0.00	0.00	0.01	0.00	0.33	0.36
FA20	0.00	0.00	0.00	0.00	0.00	0.00	0.01	0.02
FA50	0.00	0.00	0.00	0.00	0.00	0.00	0.08	0.08
FA7X	0.00	0.01	0.00	0.00	0.00	0.00	0.18	0.30
FA8X	0.00	0.00	0.00	0.00	0.00	0.00	0.04	0.03
G150	0.00	0.00	0.00	0.00	0.01	0.00	0.08	0.16
G280	0.00	0.00	0.00	0.00	0.00	0.00	0.17	0.19
GA5C	0.00	0.00	0.00	0.00	0.00	0.00	0.03	0.03
GA6C	0.00	0.01	0.00	0.00	0.00	0.00	0.06	0.10
GALX	0.00	0.00	0.00	0.00	0.01	0.00	0.18	0.21
GL5T	0.00	0.00	0.01	0.00	0.03	0.01	0.21	0.37
GL7T	0.00	0.00	0.00	0.00	0.01	0.00	0.22	0.32
GLEX	0.00	0.03	0.00	0.00	0.01	0.00	0.92	1.42
GLF4	0.00	0.01	0.02	0.00	0.11	0.00	0.98	1.51
GLF5	0.00	0.03	0.06	0.01	0.03	0.00	1.01	1.54
GLF6	0.00	0.00	0.00	0.00	0.08	0.00	0.64	1.03
H25B	0.00	0.02	0.01	0.00	0.00	0.00	0.50	0.82
H25C	0.00	0.00	0.00	0.00	0.00	0.00	0.02	0.02
HA4T	0.00	0.00	0.00	0.00	0.00	0.00	0.00	0.04
HDJT	0.00	0.00	0.00	0.00	0.00	0.00	0.04	0.06
J328	0.00	0.00	0.00	0.00	0.00	0.00	0.01	0.04
LJ35	0.00	0.00	0.00	0.00	0.00	0.00	0.07	0.08
LJ40	0.00	0.00	0.00	0.00	0.00	0.00	0.01	0.00
LJ45	0.00	0.00	0.01	0.00	0.00	0.00	0.16	0.39
LJ60	0.00	0.00	0.00	0.00	0.01	0.00	0.14	0.20
LJ75	0.00	0.00	0.01	0.00	0.00	0.00	0.02	0.03
MD11	0.00	0.00	0.08	0.00	0.02	0.00	1.62	2.10
P28A	0.00	0.00	0.00	0.00	0.01	0.00	0.00	0.00
PA46	0.00	0.00	0.00	0.00	0.00	0.00	0.00	0.03
PC12	0.00	0.02	0.00	0.00	0.14	0.00	0.27	0.93
PC24	0.00	0.00	0.00	0.00	0.00	0.00	0.01	0.04
PRM1	0.00	0.00	0.00	0.00	0.00	0.00	0.01	0.06
S22T	0.00	0.00	0.00	0.00	0.00	0.00	0.00	0.02
SR20	0.00	0.00	0.00	0.00	0.00	0.00	0.01	0.00
SR22	0.00	0.00	0.00	0.00	0.00	0.00	0.00	0.01
A346	0.00	0.00	0.01	0.00	0.00	0.00	0.04	0.02
SF50	0.00	0.00	0.00	0.00	0.00	0.00	0.01	0.02
LJ55	0.00	0.00	0.00	0.00	0.00	0.00	0.03	0.01
C425	0.00	0.00	0.00	0.00	0.00	0.00	0.00	0.01
B773	0.00	0.00	0.01	0.00	0.00	0.00	0.00	1.00

**LAX Average Daily Runway Use By Aircraft Type - 24 Hours
First Quarter 2022**

Arrivals (Average Daily Operations)								
Aircraft Type	06L	06R	07L	07R	24L	24R	25L	25R
B773	0.00	0.00	0.00	0.01	0.00	0.09	0.87	0.01
MD81	0.00	0.00	0.00	0.00	0.00	0.00	0.01	0.00
DA42	0.00	0.00	0.00	0.00	0.00	0.00	0.02	0.00
SB20	0.01	0.00	0.00	0.00	0.00	0.00	0.04	0.00
GJ6	0.00	0.00	0.00	0.00	0.00	0.00	0.02	0.00
PRMI	0.00	0.00	0.00	0.00	0.00	0.00	0.06	0.00
C82R	0.00	0.00	0.00	0.00	0.00	0.01	0.00	0.00
A339	0.00	0.01	0.00	0.00	0.00	0.01	0.00	0.00
SW3	0.00	0.00	0.00	0.00	0.00	0.00	0.01	0.00
B712	0.00	0.00	0.00	0.00	0.00	0.00	0.01	0.00
FA10	0.00	0.00	0.00	0.00	0.00	0.00	0.01	0.00
EPIC	0.00	0.00	0.00	0.00	0.00	0.00	0.02	0.00
AEST	0.00	0.00	0.00	0.00	0.00	0.01	0.01	0.00
FATH	0.00	0.00	0.00	0.00	0.00	0.01	0.00	0.00

Departures (Average Daily Operations)								
Aircraft Type	06L	06R	07L	07R	24L	24R	25L	25R
MD81	0.00	0.00	0.00	0.00	0.00	0.00	0.00	0.01
DA42	0.00	0.00	0.00	0.00	0.00	0.00	0.00	0.02
SB20	0.00	0.01	0.00	0.00	0.00	0.00	0.02	0.02
GJ6	0.00	0.00	0.00	0.00	0.00	0.00	0.00	0.02
PRMI	0.00	0.00	0.00	0.00	0.00	0.00	0.01	0.04
C82R	0.00	0.00	0.00	0.00	0.00	0.00	0.01	0.00
A339	0.00	0.00	0.00	0.00	0.02	0.00	0.00	0.00
SW3	0.00	0.00	0.00	0.00	0.00	0.00	0.01	0.00
B712	0.00	0.00	0.00	0.00	0.00	0.00	0.00	0.01
FA10	0.00	0.00	0.00	0.00	0.00	0.00	0.01	0.00
EPIC	0.00	0.00	0.00	0.00	0.00	0.00	0.01	0.01
AEST	0.00	0.00	0.00	0.00	0.00	0.00	0.00	0.02
FATH	0.00	0.01	0.00	0.00	0.00	0.00	0.00	0.00

**LAX Average Daily Runway Use By Aircraft Type - Night Time (10pm - 7am)
First Quarter 2022**

Arrivals (Average Daily Operations)								
Aircraft Type	06L	06R	07L	07R	24L	24R	25L	25R
A20N	0.13	0.70	0.00	0.09	0.00	0.18	2.72	0.00
A21N	0.17	1.34	0.00	0.14	0.01	2.69	3.76	0.07
A306	0.02	0.49	0.04	0.02	0.00	0.00	0.34	0.03
A319	0.16	0.86	0.00	0.09	0.00	0.37	1.71	0.03
A320	0.13	1.40	0.00	0.17	0.00	1.52	5.36	0.07
A321	0.51	2.77	0.01	0.28	0.02	3.50	8.90	0.03
A332	0.10	0.88	0.00	0.00	0.07	1.20	0.37	0.00
A333	0.00	0.00	0.00	0.00	0.00	0.00	0.02	0.00
A359	0.09	0.41	0.00	0.00	0.01	0.84	0.26	0.00
A35K	0.01	0.02	0.00	0.00	0.00	0.10	0.01	0.00
A388	0.01	0.01	0.00	0.00	0.00	0.00	0.00	0.00
ASTR	0.00	0.00	0.00	0.00	0.00	0.00	0.02	0.00
B350	0.01	0.01	0.00	0.00	0.01	0.08	0.07	0.00
B38M	0.19	0.56	0.00	0.01	0.06	2.49	0.40	0.00
B39M	0.07	0.91	0.00	0.07	0.00	0.27	2.13	0.04
B722	0.00	0.01	0.00	0.00	0.00	0.00	0.00	0.00
B737	0.18	0.43	0.00	0.02	0.03	4.44	0.23	0.00
B738	0.22	1.31	0.02	0.12	0.03	2.58	3.77	0.01
B739	0.22	1.13	0.01	0.14	0.00	2.20	2.67	0.03
B744	0.17	1.46	0.08	0.20	0.00	0.06	2.28	0.01
B748	0.07	0.63	0.00	0.12	0.00	0.01	0.36	0.00
B752	0.44	2.61	0.13	0.14	0.23	1.17	1.63	0.01
B753	0.11	0.67	0.00	0.01	0.07	0.48	0.72	0.03
B762	0.01	0.11	0.01	0.02	0.00	0.00	0.49	0.00
B763	0.23	3.00	0.59	0.37	0.00	0.39	4.51	0.08
B764	0.01	0.03	0.00	0.00	0.01	0.49	0.02	0.00
B772	0.02	0.11	0.00	0.01	0.00	0.10	0.51	0.00
B77L	0.28	1.71	0.07	0.14	0.00	0.11	1.63	0.02
B77W	0.06	1.13	0.01	0.04	0.00	0.74	0.46	0.01
B788	0.03	0.17	0.00	0.00	0.00	0.20	0.14	0.00
B789	0.08	1.03	0.00	0.04	0.03	0.14	1.01	0.01
B78X	0.00	0.02	0.00	0.00	0.00	0.00	0.04	0.00
BCS1	0.00	0.01	0.00	0.00	0.00	0.16	0.08	0.00
BCS3	0.00	0.00	0.00	0.00	0.00	0.11	0.07	0.01
BE20	0.00	0.00	0.00	0.00	0.00	0.00	0.01	0.00
BE40	0.00	0.00	0.00	0.00	0.00	0.00	0.03	0.00
BE99	0.02	0.02	0.00	0.00	0.00	0.32	0.32	0.00
BE9L	0.00	0.00	0.00	0.00	0.00	0.00	0.01	0.00
C172	0.00	0.00	0.00	0.00	0.00	0.01	0.00	0.00
C208	0.00	0.00	0.00	0.00	0.00	0.00	0.02	0.01

Departures (Average Daily Operations)								
Aircraft Type	06L	06R	07L	07R	24L	24R	25L	25R
A20N	0.00	0.01	0.12	0.00	0.58	0.01	0.11	4.41
A21N	0.00	0.02	0.09	0.00	0.24	0.00	0.06	4.10
A306	0.00	0.00	0.00	0.00	0.00	0.00	0.03	0.72
A319	0.00	0.02	0.18	0.00	1.42	0.04	0.26	3.52
A320	0.00	0.01	0.23	0.00	2.23	0.04	0.28	7.93
A321	0.00	0.18	0.42	0.00	3.26	0.13	0.61	17.83
A332	0.00	0.00	0.03	0.00	0.37	0.00	0.03	0.68
A333	0.00	0.00	0.00	0.00	0.00	0.00	0.00	0.02
A343	0.00	0.00	0.00	0.00	0.00	0.00	0.00	0.03
A359	0.00	0.00	0.12	0.00	3.03	0.03	0.09	2.23
A35K	0.00	0.00	0.00	0.00	0.07	0.00	0.00	0.06
A388	0.00	0.01	0.00	0.00	0.24	0.00	0.03	0.00
ASTR	0.00	0.00	0.00	0.00	0.00	0.00	0.00	0.01
B350	0.00	0.01	0.00	0.00	0.09	0.01	0.00	0.51
B38M	0.00	0.03	0.02	0.00	1.43	0.03	0.02	0.84
B39M	0.00	0.00	0.08	0.00	0.36	0.04	0.10	2.79
B722	0.00	0.00	0.00	0.00	0.00	0.00	0.00	0.01
B735	0.00	0.00	0.00	0.00	0.00	0.00	0.00	0.03
B737	0.00	0.03	0.06	0.00	1.81	0.23	0.06	1.78
B738	0.00	0.12	0.22	0.00	2.69	0.10	0.23	8.91
B739	0.00	0.07	0.22	0.00	3.86	0.08	0.12	6.19
B744	0.00	0.00	0.11	0.00	0.00	0.00	0.27	5.08
B748	0.00	0.00	0.00	0.03	0.01	0.00	1.49	0.09
B752	0.00	0.03	0.10	0.00	2.23	0.02	0.12	3.47
B753	0.00	0.00	0.09	0.00	0.84	0.00	0.11	2.81
B762	0.00	0.00	0.04	0.00	0.00	0.00	0.07	1.39
B763	0.00	0.00	0.16	0.00	0.22	0.01	0.43	6.57
B764	0.00	0.01	0.03	0.00	0.93	0.00	0.02	0.42
B772	0.00	0.00	0.03	0.00	0.36	0.00	0.01	1.36
B77L	0.00	0.00	0.11	0.00	0.01	0.00	0.18	2.64
B77W	0.00	0.01	0.14	0.00	2.97	0.01	0.09	4.27
B788	0.00	0.00	0.00	0.00	0.02	0.00	0.00	0.10
B789	0.00	0.03	0.16	0.00	1.86	0.00	0.03	3.36
B78X	0.00	0.00	0.01	0.00	0.01	0.00	0.01	0.49
BCS1	0.00	0.00	0.00	0.00	0.00	0.00	0.00	0.01
BCS3	0.00	0.00	0.00	0.00	0.01	0.00	0.00	0.00
BE20	0.00	0.00	0.00	0.00	0.00	0.00	0.00	0.01
BE40	0.00	0.00	0.01	0.00	0.00	0.00	0.00	0.01
BE99	0.00	0.00	0.01	0.00	0.00	0.00	0.01	0.59
C172	0.00	0.00	0.00	0.00	0.00	0.00	0.01	0.00

LAX Average Daily Runway Use By Aircraft Type - Night Time (10pm - 7am)
First Quarter 2022

Arrivals (Average Daily Operations)								
Aircraft Type	06L	06R	07L	07R	24L	24R	25L	25R
C25A	0.00	0.01	0.00	0.00	0.01	0.00	0.04	0.00
C25B	0.00	0.01	0.00	0.01	0.00	0.00	0.02	0.00
C525	0.00	0.01	0.00	0.00	0.00	0.00	0.01	0.00
C56X	0.02	0.01	0.00	0.00	0.00	0.00	0.07	0.00
C680	0.00	0.00	0.00	0.00	0.00	0.00	0.01	0.00
C68A	0.00	0.00	0.00	0.00	0.00	0.01	0.02	0.00
C700	0.00	0.00	0.00	0.00	0.00	0.01	0.01	0.00
C750	0.00	0.00	0.00	0.00	0.00	0.01	0.01	0.00
CL30	0.00	0.04	0.00	0.01	0.00	0.02	0.03	0.00
CL35	0.00	0.02	0.00	0.01	0.00	0.02	0.01	0.00
CL60	0.00	0.01	0.00	0.02	0.00	0.01	0.14	0.00
CRJ2	0.01	0.02	0.00	0.00	0.01	0.38	0.30	0.00
CRJ7	0.00	0.06	0.00	0.02	0.00	0.50	0.57	0.00
DC10	0.02	0.23	0.03	0.02	0.00	0.00	0.08	0.00
E135	0.00	0.00	0.00	0.00	0.00	0.01	0.01	0.00
E145	0.01	0.01	0.00	0.00	0.00	0.00	0.03	0.00
E170	0.06	0.02	0.00	0.02	0.00	0.88	0.38	0.01
E545	0.00	0.00	0.00	0.00	0.00	0.00	0.04	0.00
E550	0.00	0.00	0.00	0.00	0.00	0.00	0.02	0.00
E55P	0.00	0.00	0.00	0.01	0.00	0.00	0.02	0.00
E75L	0.01	0.39	0.00	0.01	0.01	2.29	1.50	0.00
E75S	0.01	0.01	0.00	0.00	0.00	0.07	0.00	0.00
F2TH	0.01	0.04	0.01	0.00	0.00	0.00	0.07	0.00
F900	0.00	0.00	0.00	0.00	0.00	0.00	0.01	0.00
FA7X	0.00	0.00	0.00	0.00	0.00	0.01	0.01	0.00
G150	0.00	0.01	0.00	0.00	0.00	0.00	0.01	0.00
G280	0.00	0.00	0.00	0.01	0.00	0.00	0.01	0.00
GA6C	0.00	0.00	0.00	0.00	0.00	0.00	0.01	0.00
GALX	0.00	0.01	0.00	0.00	0.00	0.00	0.02	0.00
GL5T	0.00	0.02	0.00	0.00	0.00	0.00	0.01	0.00
GL7T	0.00	0.01	0.00	0.00	0.00	0.00	0.03	0.00
GLEX	0.01	0.00	0.01	0.01	0.00	0.02	0.12	0.00
GLF4	0.00	0.02	0.00	0.00	0.01	0.01	0.13	0.00
GLF5	0.00	0.03	0.01	0.03	0.00	0.01	0.12	0.01
GLF6	0.00	0.02	0.00	0.00	0.00	0.01	0.11	0.00
H25B	0.00	0.06	0.00	0.02	0.00	0.00	0.12	0.00
J328	0.00	0.00	0.00	0.00	0.00	0.00	0.01	0.00
LJ35	0.00	0.00	0.00	0.00	0.00	0.01	0.00	0.00
LJ45	0.00	0.00	0.00	0.00	0.00	0.00	0.03	0.00
LJ60	0.00	0.02	0.00	0.00	0.00	0.00	0.01	0.00
MD11	0.06	0.47	0.01	0.07	0.00	0.02	0.63	0.02

Departures (Average Daily Operations)								
Aircraft Type	06L	06R	07L	07R	24L	24R	25L	25R
C208	0.00	0.00	0.00	0.00	0.00	0.00	0.00	0.01
C25A	0.00	0.00	0.00	0.00	0.00	0.00	0.00	0.04
C25B	0.00	0.00	0.02	0.00	0.01	0.00	0.00	0.06
C525	0.00	0.00	0.00	0.00	0.00	0.00	0.00	0.01
C560	0.00	0.00	0.00	0.00	0.00	0.00	0.00	0.01
C56X	0.00	0.00	0.00	0.00	0.00	0.00	0.02	0.08
C680	0.00	0.00	0.00	0.00	0.00	0.00	0.00	0.03
C68A	0.00	0.00	0.00	0.00	0.01	0.00	0.01	0.19
C700	0.00	0.00	0.00	0.00	0.00	0.00	0.00	0.03
C750	0.00	0.00	0.00	0.00	0.00	0.00	0.00	0.07
CL30	0.00	0.00	0.00	0.00	0.00	0.00	0.03	0.16
CL35	0.00	0.00	0.00	0.00	0.00	0.00	0.00	0.18
CL60	0.00	0.00	0.01	0.00	0.00	0.00	0.00	0.22
CRJ2	0.00	0.00	0.00	0.00	0.01	0.00	0.01	0.51
CRJ7	0.00	0.00	0.02	0.00	0.02	0.00	0.01	1.24
DC10	0.00	0.00	0.01	0.00	0.00	0.00	0.06	0.69
E135	0.00	0.00	0.00	0.00	0.00	0.00	0.02	0.04
E145	0.00	0.00	0.00	0.00	0.00	0.00	0.00	0.06
E170	0.00	0.03	0.02	0.00	0.84	0.00	0.00	1.09
E190	0.00	0.00	0.00	0.00	0.00	0.00	0.00	0.01
E35L	0.00	0.00	0.00	0.00	0.00	0.00	0.00	0.01
E545	0.00	0.00	0.00	0.00	0.00	0.00	0.00	0.04
E550	0.00	0.00	0.00	0.00	0.00	0.00	0.00	0.03
E55P	0.00	0.00	0.01	0.00	0.00	0.00	0.00	0.17
E75L	0.00	0.02	0.07	0.00	1.44	0.00	0.00	2.79
E75S	0.00	0.00	0.00	0.00	0.19	0.00	0.00	0.00
F2TH	0.00	0.00	0.00	0.00	0.00	0.00	0.00	0.18
F900	0.00	0.00	0.00	0.00	0.00	0.00	0.00	0.03
FA7X	0.00	0.00	0.00	0.00	0.00	0.00	0.00	0.04
FA8X	0.00	0.00	0.00	0.00	0.00	0.00	0.00	0.01
G150	0.00	0.00	0.00	0.00	0.00	0.00	0.00	0.01
G280	0.00	0.00	0.00	0.00	0.00	0.00	0.00	0.02
GA5C	0.00	0.00	0.00	0.00	0.00	0.00	0.01	0.00
GA6C	0.00	0.00	0.00	0.00	0.00	0.00	0.00	0.01
GALX	0.00	0.00	0.00	0.00	0.00	0.00	0.00	0.01
GL5T	0.00	0.00	0.00	0.00	0.00	0.00	0.00	0.06
GL7T	0.00	0.00	0.00	0.00	0.00	0.00	0.00	0.03
GLEX	0.00	0.00	0.00	0.00	0.00	0.00	0.00	0.17
GLF4	0.00	0.00	0.00	0.00	0.00	0.00	0.02	0.20
GLF5	0.00	0.00	0.01	0.00	0.00	0.00	0.01	0.23
GLF6	0.00	0.00	0.00	0.00	0.01	0.00	0.01	0.17

LAX Noise Management
Source: LAX ANOMS, based on available FAA radar flight track data.

**LAX Average Daily Runway Use By Aircraft Type - Night Time (10pm - 7am)
First Quarter 2022**

Arrivals (Average Daily Operations)								
Aircraft Type	06L	06R	07L	07R	24L	24R	25L	25R
PC12	0.00	0.01	0.00	0.02	0.00	0.02	0.04	0.00
B734	0.00	0.00	0.01	0.00	0.00	0.00	0.03	0.00
PRM1	0.00	0.00	0.00	0.00	0.00	0.00	0.01	0.00
A346	0.00	0.01	0.00	0.00	0.00	0.00	0.00	0.00
E50P	0.00	0.00	0.00	0.00	0.00	0.00	0.01	0.00
HDJT	0.00	0.00	0.00	0.00	0.00	0.00	0.01	0.00
PC24	0.00	0.00	0.00	0.00	0.00	0.00	0.01	0.00
SB20	0.00	0.00	0.00	0.00	0.00	0.00	0.01	0.00
GJ6	0.00	0.00	0.00	0.00	0.00	0.00	0.01	0.00
C550	0.00	0.00	0.00	0.00	0.00	0.00	0.01	0.00
A339	0.00	0.01	0.00	0.00	0.00	0.00	0.00	0.00
AEST	0.00	0.00	0.00	0.00	0.00	0.01	0.01	0.00
EPIC	0.00	0.00	0.00	0.00	0.00	0.00	0.01	0.00
LJ55	0.00	0.00	0.00	0.00	0.00	0.00	0.01	0.00

Departures (Average Daily Operations)								
Aircraft Type	06L	06R	07L	07R	24L	24R	25L	25R
H25B	0.00	0.00	0.00	0.00	0.00	0.00	0.00	0.14
LJ35	0.00	0.00	0.00	0.00	0.00	0.00	0.00	0.01
LJ45	0.00	0.00	0.00	0.00	0.00	0.00	0.01	0.04
LJ60	0.00	0.00	0.00	0.00	0.00	0.00	0.00	0.01
MD11	0.00	0.00	0.04	0.00	0.00	0.00	0.04	1.17
PC12	0.00	0.00	0.00	0.00	0.00	0.00	0.00	0.12
B734	0.00	0.00	0.00	0.00	0.00	0.00	0.00	0.06
C25C	0.00	0.00	0.00	0.00	0.00	0.00	0.00	0.01
FA50	0.00	0.00	0.00	0.00	0.00	0.00	0.00	0.01
PRM1	0.00	0.00	0.00	0.00	0.00	0.00	0.00	0.01
A346	0.00	0.00	0.00	0.00	0.00	0.00	0.01	0.02
C650	0.00	0.00	0.00	0.00	0.00	0.00	0.00	0.01
B733	0.00	0.00	0.00	0.00	0.00	0.00	0.00	0.01
PC24	0.00	0.00	0.00	0.00	0.00	0.00	0.00	0.03
B773	0.00	0.00	0.01	0.00	0.00	0.00	0.00	0.39
SB20	0.00	0.00	0.00	0.00	0.00	0.00	0.00	0.02
GJ6	0.00	0.00	0.00	0.00	0.00	0.00	0.00	0.02
C550	0.00	0.00	0.00	0.00	0.00	0.00	0.00	0.01

**LAX Average Daily Runway Use By Aircraft Group - 24 Hours
First Quarter 2022**

Arrivals (Average Daily Operations)								
Aircraft Group	06L	06R	07L	07R	24L	24R	25L	25R
Small Jet	1.24	0.89	0.03	0.93	0.52	95.02	69.54	1.01
Small Narrow-Body Jet	2.54	7.32	0.04	2.17	1.08	124.80	130.36	2.57
Large Narrow-Body Jet	1.66	7.39	0.14	1.50	0.59	43.33	82.53	1.30
Small Wide-Body Jet	0.33	3.63	0.64	0.51	0.07	6.16	17.82	0.18
Large Wide-Body Jet	1.49	8.31	0.20	1.12	0.29	45.29	57.43	0.52
Non-Jet	0.06	0.04	0.00	0.11	0.08	3.18	4.98	0.38
Military	0.00	0.00	0.00	0.00	0.00	0.00	0.00	0.00

Departures (Average Daily Operations)								
Aircraft Group	06L	06R	07L	07R	24L	24R	25L	25R
Small Jet	0.00	1.30	0.90	0.01	59.90	0.14	15.23	92.47
Small Narrow-Body Jet	0.02	1.30	2.71	0.01	125.78	0.81	2.49	138.37
Large Narrow-Body Jet	0.00	0.66	1.34	0.00	38.70	0.23	2.41	95.23
Small Wide-Body Jet	0.00	0.09	0.34	0.00	7.48	0.01	5.30	16.32
Large Wide-Body Jet	0.00	0.30	1.26	0.12	43.80	0.07	14.63	54.86
Non-Jet	0.00	0.06	0.04	0.00	0.51	0.01	1.28	6.84
Military	0.00	0.00	0.00	0.00	0.01	0.00	0.00	0.00

**LAX Average Daily Runway Use By Aircraft Group - Night Time (10pm - 7am)
First Quarter 2022**

Arrivals (Average Daily Operations)								
Aircraft Group	06L	06R	07L	07R	24L	24R	25L	25R
Small Jet	0.14	0.89	0.03	0.20	0.04	4.29	4.26	0.02
Small Narrow-Body Jet	1.30	7.32	0.04	0.71	0.12	14.31	19.17	0.20
Large Narrow-Body Jet	1.23	7.39	0.14	0.58	0.33	7.83	15.01	0.14
Small Wide-Body Jet	0.28	3.63	0.64	0.41	0.01	0.88	5.37	0.11
Large Wide-Body Jet	0.99	8.31	0.20	0.66	0.11	3.53	7.80	0.08
Non-Jet	0.03	0.04	0.00	0.02	0.01	0.44	0.51	0.01
Military	0.00	0.00	0.00	0.00	0.00	0.00	0.00	0.00

Departures (Average Daily Operations)								
Aircraft Group	06L	06R	07L	07R	24L	24R	25L	25R
Small Jet	0.00	0.06	0.18	0.00	2.54	0.00	0.18	8.59
Small Narrow-Body Jet	0.00	0.30	1.13	0.00	14.39	0.59	1.18	36.51
Large Narrow-Body Jet	0.00	0.23	0.70	0.00	6.58	0.16	0.90	28.21
Small Wide-Body Jet	0.00	0.01	0.23	0.00	1.16	0.01	0.56	9.10
Large Wide-Body Jet	0.00	0.06	0.79	0.03	8.94	0.04	2.34	22.67
Non-Jet	0.00	0.01	0.01	0.00	0.09	0.01	0.02	1.27
Military	0.00	0.00	0.00	0.00	0.00	0.00	0.00	0.00

Summary of Actions Taken by LAWA to Comply with Conditions to the Current Noise Variance for Los Angeles International Airport

First Quarter 2022

The Los Angeles World Airports (LAWA) continuously works to operate an airport that maintains the highest possible environmental quality of life for surrounding communities. To that end, LAWA continues to take the following actions:

- LAWA continues to implement its Aircraft Noise Mitigation Program (ANMP), designed to fund the mitigation of all incompatible land uses within the noise impact boundary as defined in the State Noise Standards. LAWA updates the ANMP report periodically to ensure that it reasonably represents the mitigation and funding programs that are in place.
- With each second quarter Quarterly Report, LAWA submits an annual update of the ANMP. This update includes the number of dwellings acoustically insulated, the cost of the program, the anticipated funding availability, and the anticipated completion date of the project.
- LAWA continues to monitor and enforce, as appropriate, all of its informal noise abatement procedures in place at LAX, including but not limited to the early turn program, preferential runway use procedures and over ocean operations procedures, as well as the formal maintenance run-up restrictions.
- LAWA continues to work with the Federal Aviation Administration and pilots to improve compliance with its “no turns before the shoreline” policy.
- LAWA will update the April 11, 2014 Report on Implementation of the Preferential Runway Use Policy at LAX within the specified period to reevaluate conditions related to compliance, implementation and possible improvements.
- LAWA continues to provide the information to the County of Los Angeles needed to prepare Quarterly Reports of Noise Monitoring. Included with the noise monitoring information forwarded each quarter is this brief report regarding the implementation of each of the conditions to the Variance.

- LAWA has not yet submitted “any proposed new or modified noise monitoring plan or system” to Caltrans during this Variance period and, therefore, has not needed to provide a copy to the County. The existing airport noise and operations monitoring system was certified by Caltrans in February 2010 and the County was provided with all submitted documentation at that time. The County continues to review and audit the data LAWA submits in each Quarterly Report.
- LAWA continues to include tabular data and graphical illustrations with each Quarterly Report describing and comparing the level and type of usage for each runway at LAX during the quarter. In addition, LAWA is including tabular data describing the daily average number of arrivals and departures by aircraft type and model on each runway during all hours and during nighttime hours from 10 pm to 7 am. LAWA is also now providing the runway usage data to the FAA for their use in monitoring air traffic runway usage.
- LAWA continues to monitor and enforce its maintenance run-up curfew (2300-0600). When applicable, LAWA will include with each Quarterly Report, information regarding monitoring and enforcement activities undertaken during the quarter. There were no enforcement actions reported during the first quarter 2022.
- LAWA continues to provide the LAX Noise Comment Phone Line with an option for callers to have a live answer as available, and continues to retrieve any complaint messages and provide appropriate responses in a timely manner.