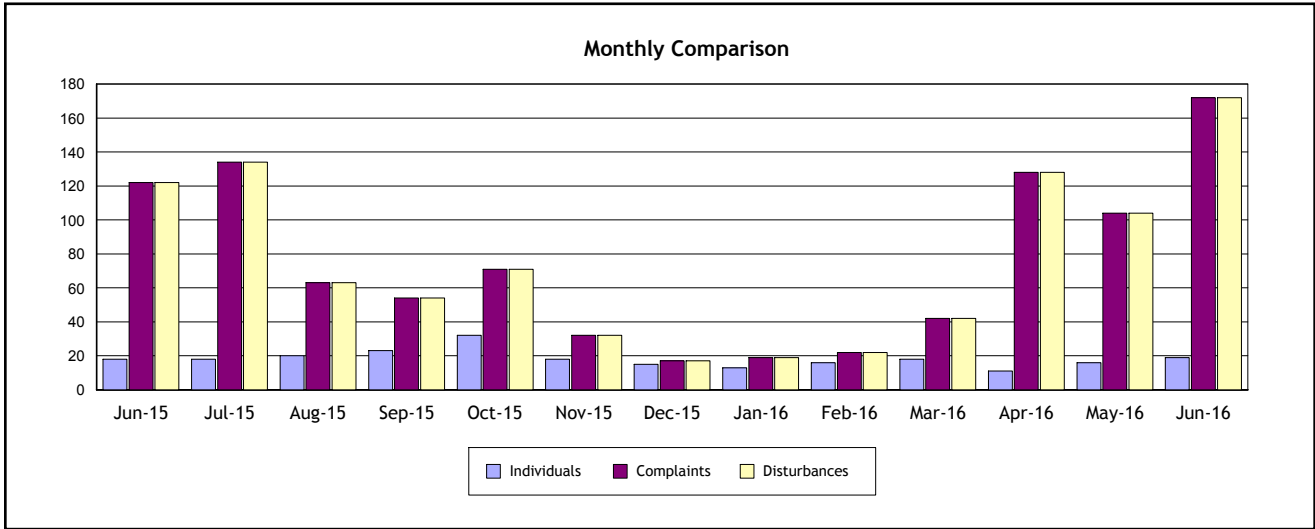


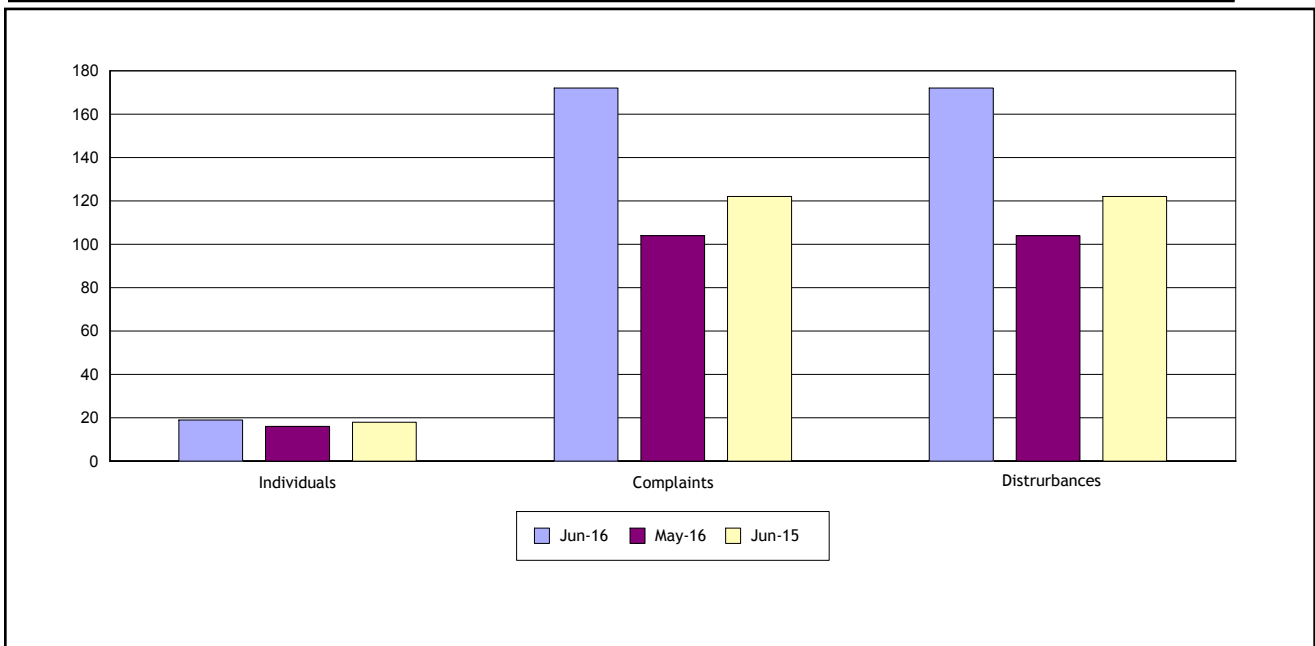
Individuals Submitting Noise Complaints 19

Noise Complaints Received 172

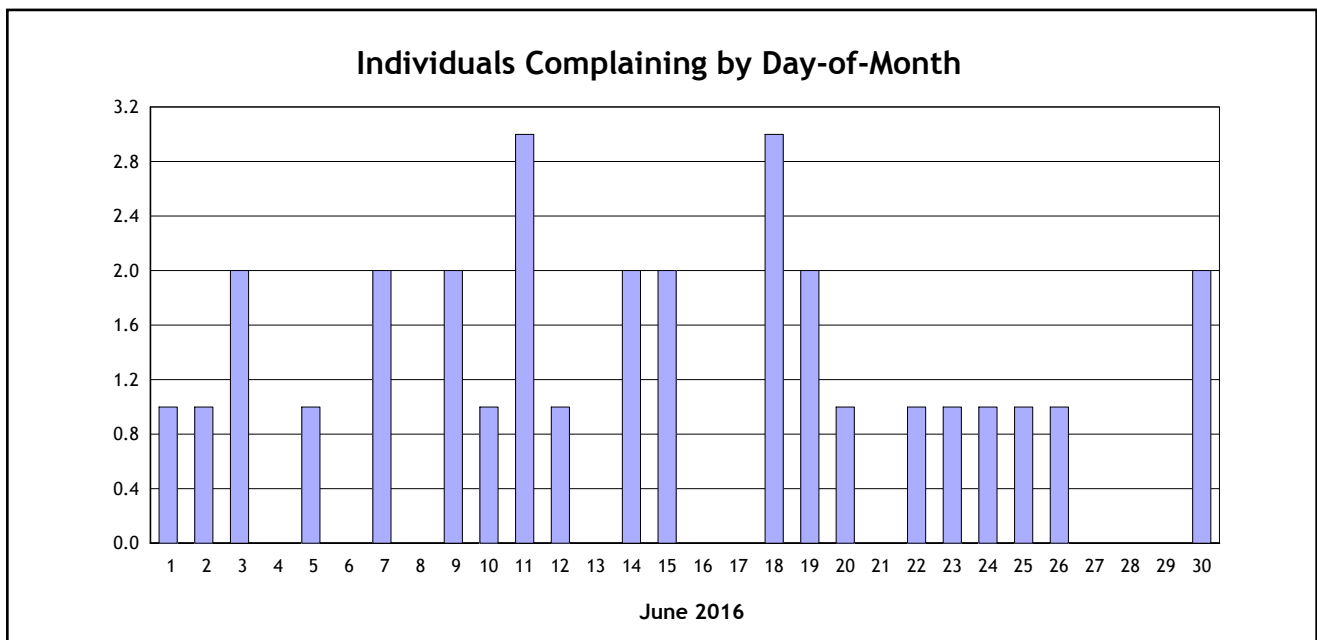
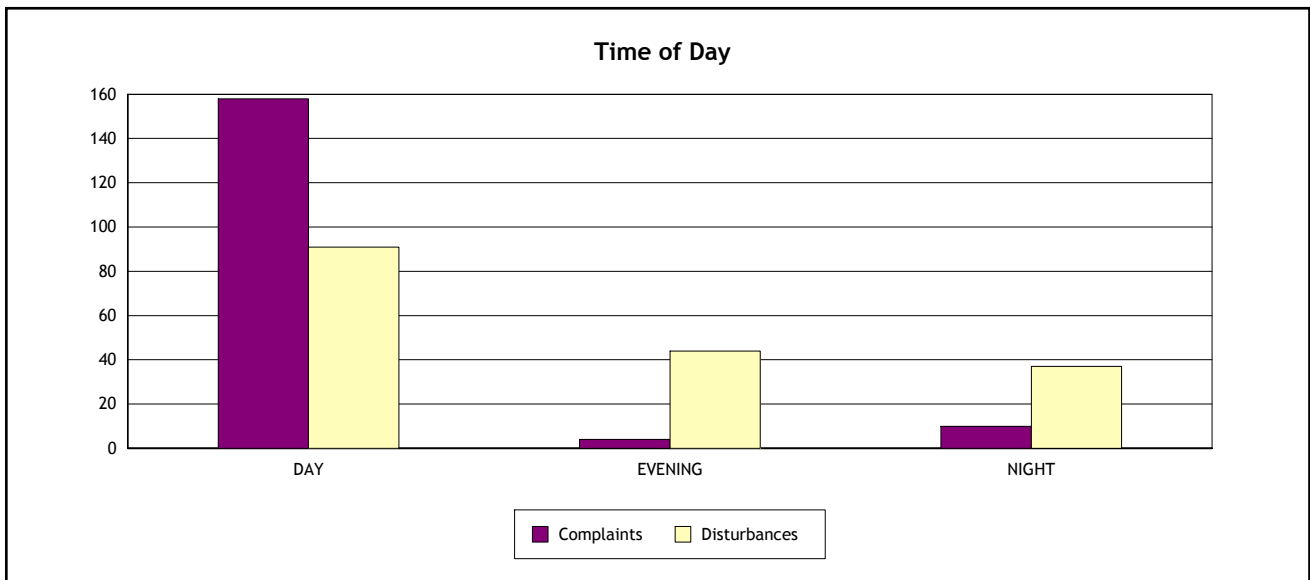
Noise Disturbances Reported 172



	June 2016	May 2016	% Change	June 2015	% Change
Individuals	19	16	19%	18	6%
Complaints	172	104	65%	122	41%
Disturbances	172	104	65%	122	41%



	Day (7:00 am - 7:00 pm)	Evening (7:00 pm - 10:00 pm)	Night (10:00 pm - 7:00 am)
Complaints	158	4	10
Disturbances	91	44	37



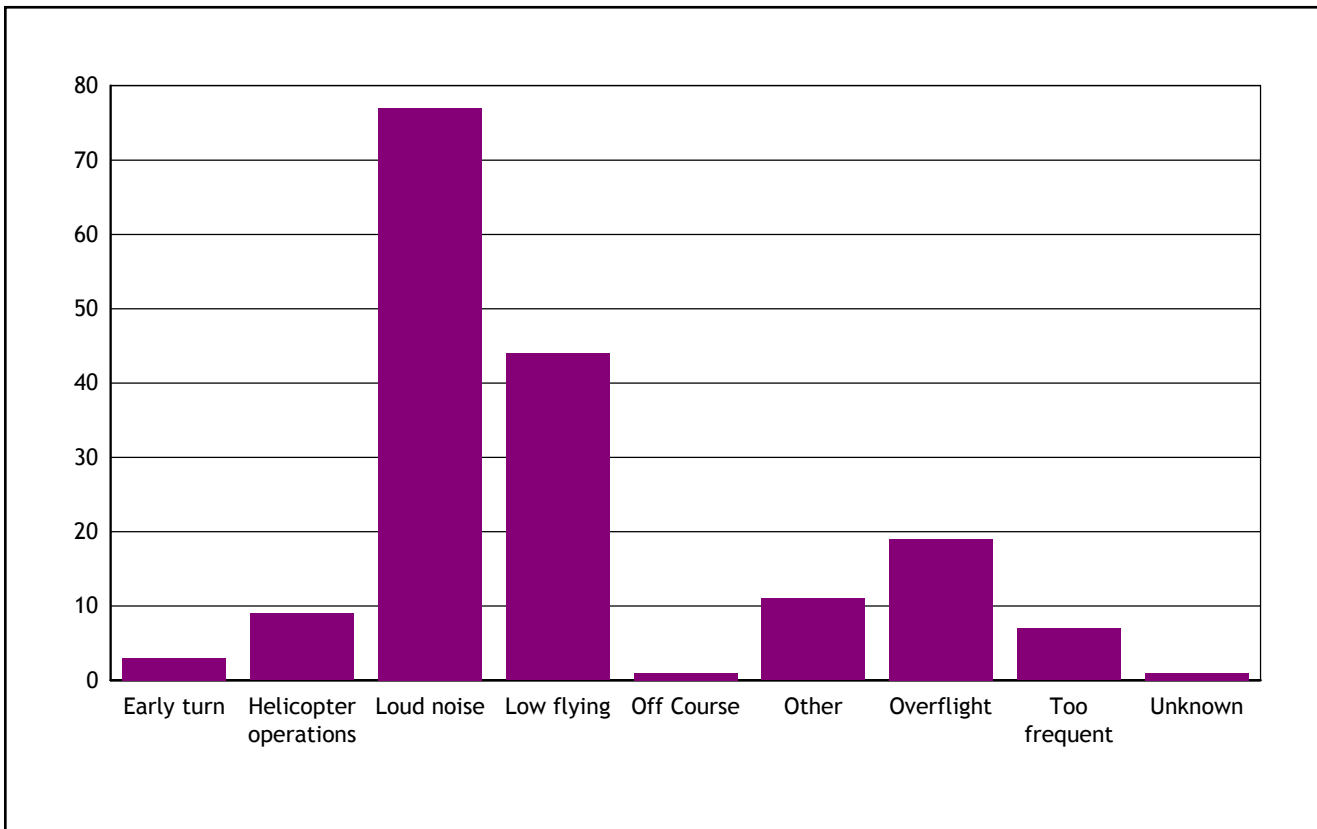
City	Individuals	Complaints	Percentage of Complaints**
Encino	2	3	2%
Granada Hills	1	1	< 1%
Hawthorne	1	1	< 1%
Lake Balboa	1	3	2%
Los Angeles	4	4	2%
North Hills	4	6	3%
Northridge	1	1	< 1%
Santa Clarita	1	1	< 1%
Sherman Oaks	2	2	1%
Studio City	1	1	< 1%
Tarzana	1	3	2%
Anonymous	NA	146	85%
TOTAL	19	172	0 10 20 30 40 50 60 70 80 90 100

Individuals	Complaints	Percentage of Complaints**
*One Individual (Anonymous)	146	85%
Individuals Reporting 2 To 5 Complaints	12	7%
Individuals Reporting One Complaint	14	8%
TOTAL	Individuals : 19	172
		0 10 20 30 40 50 60 70 80 90 100

* One individual reporting 6 or more complaints shown by city.

** All percentages are rounded to the nearest whole number.

<i>Type of Disturbance*</i>	<i>Number of Complaints</i>
Early turn	3
Helicopter operations	9
Loud noise	77
Low flying	44
Off Course	1
Other	11
Overflight	19
Too frequent	7
Unknown	1
TOTAL	172



Note: * As reported by complainant.

Contact		Disturbance		City	Disturbance**	Findings
Date	Time	Date	Time			
6/03/2016	8:22 am	6/03/2016	6:15 am	Sherman Oaks	Loud noise	The helicopter activity that you reported on Friday, June 3, 2016 at 0615 was attributed to several news media helicopters and a Los Angeles Police Department (LAPD) Air Support Division (ASD) helicopter that were conducting operations unrelated to Van Nuys Airport (VNY). Aircraft fly under the control and direction of the Federal Aviation Administration (FAA) Air Traffic Controllers (ATC). Some aircraft fly under Visual Flight Rules (VFR) and must adhere to FAA rules and regulations that govern such activities. Helicopters, in general do not have altitude nor route restrictions outside an airport's area. Please note that airports do not control aircraft in flight. The FAA has ultimate authority over aircraft flight patterns and regulates virtually all aviation activity. This includes takeoffs, landings, altitudes and direction of flight with the major emphasis on safety. The FAA may be contacted by writing to FAA Western-Pacific Region, P.O. Box 92007, Los Angeles, CA 90009 for further information.
6/07/2016	1:01 am	6/07/2016	12:45 am	Encino	Overflight	The aircraft noise you reported on Tuesday, June 7, 2016 at 0045 was associated with a two Falcon FA50 departures from VNY. The departures from VNY runway 16R were under the control and direction of (FAA) SoCal Air Traffic Controllers (ATC). The departures were consistent with normal VNY departure operations. The Falcon FA50 departure at 0046 failed to meet the voluntary VNY Fly Friendly Quiet Jet Departure Program target noise level for Falcon FA50 airplanes. The operator of this aircraft has been notified by staff regarding the deviation from the voluntary program and was requested to make the necessary adjustments to better comply with the program to minimize noise impacts on the surrounding neighborhoods. The second Falcon FA50 departure at 0056 was within the aircraft-specific Single Event Noise Exposure Level (SENEL) established in the VNY Fly Friendly Quiet Jet Departure Program. Please see page 8 of the VNY Noise Program brochure for more information on the program at: www.lawa.org/uploadedFiles/VNY/pdf/Noise_Programs.pdf Please note that airports do not have jurisdiction on aircraft in flight. The Federal Aviation Administration has ultimate authority over aircraft flight patterns and regulates virtually all aviation activities. This includes altitudes and direction of flight with the major emphasis on safety. Please contact the FAA by writing to FAA Western-Pacific

Note : Investigation currently limited to one report of disturbance per complaint, and a maximum of five complaints per individual per month.

* Complaints exceeding monthly limit and/or anonymous complaints are not investigated and are not shown.

** Disturbance is as reported by complainant.

Contact		Disturbance		City	Disturbance	Findings
Date	Time	Date	Time			
						Region, P.O. Box 92007, Los Angeles, CA 90009 for further information.
6/09/2016	1:15 pm	6/09/2016	8:14 am	Lake Balboa	Loud noise	The aircraft noise you reported on Thursday, June 9, 2016 at 0845 was associated with a modified Stage 3 Gulfstream G-III departure from VNY. The departure from VNY runway 16R was under the control and direction of Federal Aviation Administration (FAA) Air Traffic Controllers (ATC). The departure was consistent with normal VNY departure operations. However, this flight failed to meet the voluntary VNY Fly Friendly Quiet Jet Departure Program target noise level for Gulfstream G-III airplanes. The operator of this aircraft has been notified by staff regarding the deviation from the voluntary program and was requested to make the necessary adjustments to better comply with the program to minimize noise impacts on the surrounding neighborhoods
6/18/2016	10:14 pm	6/18/2016	9:00 pm	Encino	Low flying	The jet airplane you reported on Saturday, June 18, 2016 at 2100 was a Boeing B737 arrival to Bob Hope Airport (BUR) and was not associated with VNY operations. Please contact the Bob Hope Airport Hotline at (800) 441-0409 for further information regarding this flight. A few minutes later, a Gulfstream G-IV arrived to VNY on runway 34L. The arrival to 34L was consistent with normal VNY northerly arrival procedures. Whenever northerly winds occur, all aircraft arrivals and departures are directed to head north into the wind due to aircraft safety requirements, and to maximize aircraft performance during takeoffs and landings. During these conditions, the FAA Controllers conduct Northerly Operations at VNY, which is the opposite direction from Southerly Operations that is normally utilized. Aircraft are directed by ATC to turn and intercept the runway heading for 34L. Aircraft can be over or near your neighborhood during these conditions. Please note that airports do not control aircraft in flight. The FAA has ultimate authority over aircraft flight patterns and regulates virtually all aviation activity. This includes takeoffs, landings, altitudes and direction of flight with the major emphasis on safety. The FAA may be contacted by writing to FAA Western-Pacific Region, P.O. Box 92007, Los Angeles, CA 90009 for further information.
6/19/2016	8:45 pm	6/19/2016	8:45 pm	Encino	Low flying	The jet airplane you reported on Sunday, June 19, 2016 at 2045 arrived to VNY runway 34L under the direction and control of the Federal Aviation Administration (FAA) Air Traffic Controllers (ATC). This arrival flew south, turned over your neighborhood at approximately 1662 feet Mean Sea Level (MSL) and landed on runway 34L. The arrival to 34L was consistent with normal VNY northerly arrival operations. Whenever northerly winds occur, all aircraft arrivals and departures are directed to head north into the wind due to aircraft safety requirements, and to maximize aircraft performance during

Note : Investigation currently limited to one report of disturbance per complaint, and a maximum of five complaints per individual per month.

* Complaints exceeding monthly limit and/or anonymous complaints are not investigated and are not shown.

** Disturbance is as reported by complainant.

Contact		Disturbance		City	Disturbance	Findings
Date	Time	Date	Time			
6/22/2016	8:46 am	6/21/2016	7:47 pm	Los Angeles	Low flying	takeoffs and landings. The aircraft you reported on Tuesday, June 21, 2016 at 1947 was a single engine propeller driven Piper PA28 that departed from VNY under the control and direction of Federal Aviation Administration (FAA) Air Traffic Controllers (ATC). Departures and arrivals are not within our jurisdiction, but we try to work with the FAA to minimize the impact on nearby residential areas. The FAA has ultimate authority over aircraft flight patterns and regulates virtually all aviation activity. This includes takeoffs, landings, altitudes and direction of flight with the major emphasis on safety. Please contact the FAA Flight Standards District Office (FSDO) at (818) 904-6291 to address your concerns regarding aviation safety or by writing to FAA Western-Pacific Region, P.O. Box 92007, Los Angeles, CA 90009 for further information.
6/23/2016	7:20 pm	6/23/2016	7:18 pm	Northridge	Low flying	The aircraft you reported on Thursday, June 23, 2016 at 1918 was a Challenger 604 that arrived at VNY under the control and direction of Federal Aviation Administration (FAA) Air Traffic Controllers (ATC). This arrival was consistent with normal VNY arrival procedures. Your residence is located near the standard arrival route for runway 16R and is subject to numerous arrival aircraft on final approach for landing. Flight patterns and altitudes for aircraft are standardized and determined by FAA procedures and electronic navigational aid equipment. Aircraft do not fly over a line on the ground. Aircraft executing the same procedures will have a natural spread where they fly over the ground. Please note that airports do not have jurisdiction on aircraft in flight. Arrival and departure patterns at VNY are not within our jurisdiction. The FAA has ultimate authority over aircraft flight patterns and regulates virtually all aviation activity. This includes takeoffs, landings, altitudes and direction of flight with the major emphasis on safety. Please contact the FAA by writing to FAA Western-Pacific Region, P.O. Box 92007, Los Angeles, CA 90009 for more information regarding this matter.
6/24/2016	12:18 pm	6/24/2016	12:18 pm	Studio City	Overflight	The aircraft traffic that you reference is mostly associated with departures from Bob Hope Airport (BUR). The aircraft in question departed from Runways 15 and 8. The departures from runway 8 were averaging (over your immediate neighborhood) approximately 5010 feet Mean Sea Level (MSL). The departures from runway 15 averaged 2673 feet MSL. These flights were not associated with VNY operations. Please contact the Bob Hope Airport Hotline at (800) 441-0409 for further information regarding this matter. There were several aircraft associated with VNY operations that flew near you residence. However, most of the jet departures from VNY do not go over your

Note : Investigation currently limited to one report of disturbance per complaint, and a maximum of five complaints per individual per month.

* Complaints exceeding monthly limit and/or anonymous complaints are not investigated and are not shown.

** Disturbance is as reported by complainant.

Contact		Disturbance		City	Disturbance	Findings
Date	Time	Date	Time			
						<p>residence. Many aircraft fly over or near your residence that transition to and from the many airports in the Los Angeles basin. There are many aircraft operations, both fixed-wing and helicopters, that are operated by various law enforcement agencies, fire departments, Medevac, media, corporate entities and private citizens. Aircraft fly under the control and direction of the Federal Aviation Administration (FAA) Air Traffic Controllers (ATC). Some aircraft fly under Visual Flight Rules (VFR) and must adhere to FAA rules and regulations that govern such activities. Please note that airports do not control aircraft in flight. The FAA has ultimate authority over aircraft flight patterns and regulates virtually all aviation activity. This includes takeoffs, landings, altitudes and direction of flight with the major emphasis on safety. The FAA may be contacted at (818) 904-6291 (Safety) or in writing to FAA Western-Pacific Region, P.O. Box 92007, Los Angeles, CA 90009 (Flight Patterns).</p>

Note : Investigation currently limited to one report of disturbance per complaint, and a maximum of five complaints per individual per month.

* Complaints exceeding monthly limit and/or anonymous complaints are not investigated and are not shown.

** Disturbance is as reported by complainant.