

Final

LOS ANGELES INTERNATIONAL AIRPORT

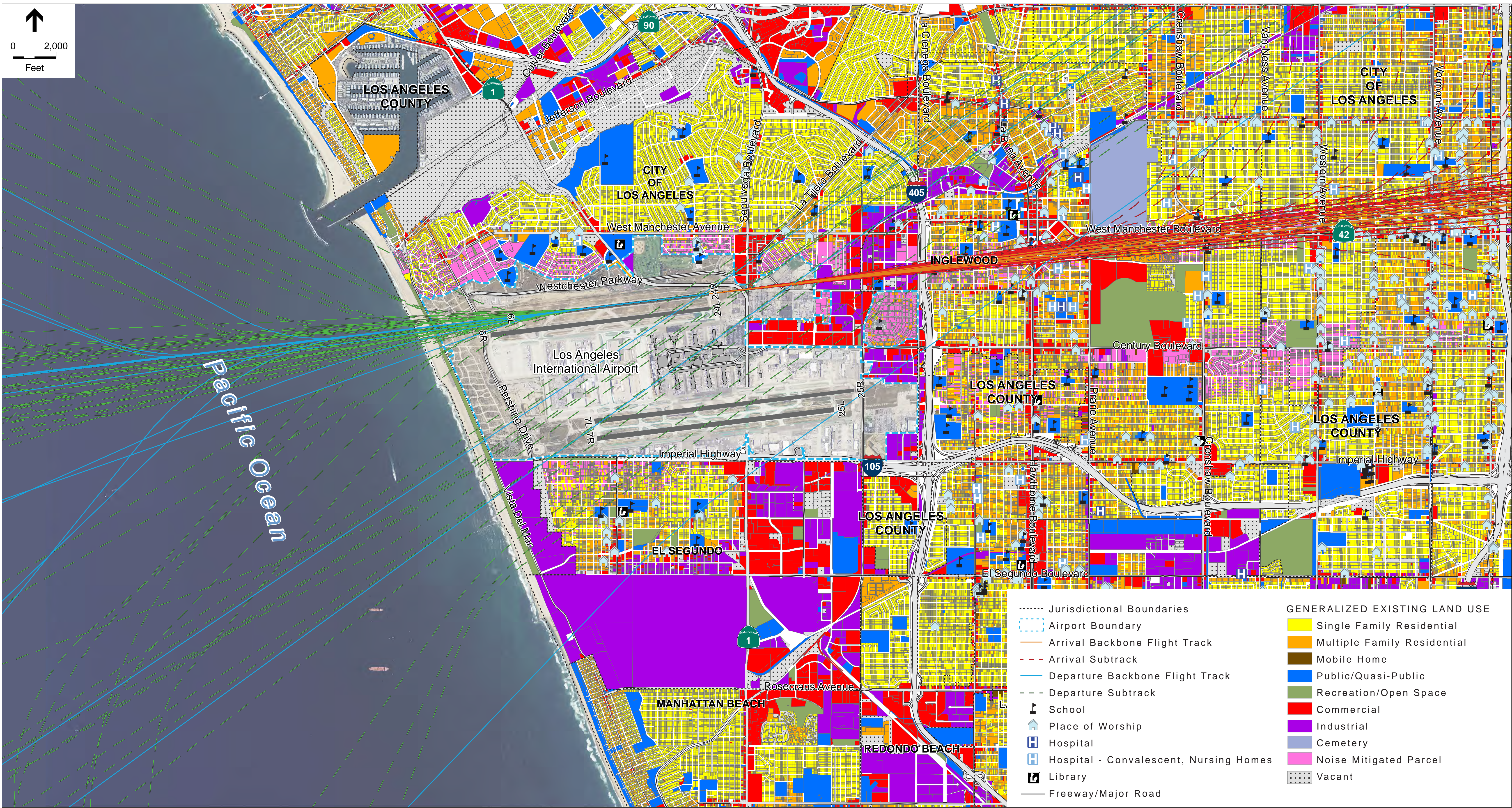
Title 14, Code of Federal Regulations (CFR) Part 150
Noise Exposure Map Report Update

Appendix I: Oversized Maps

Prepared for
City of Los Angeles
Los Angeles World Airports

August 2015

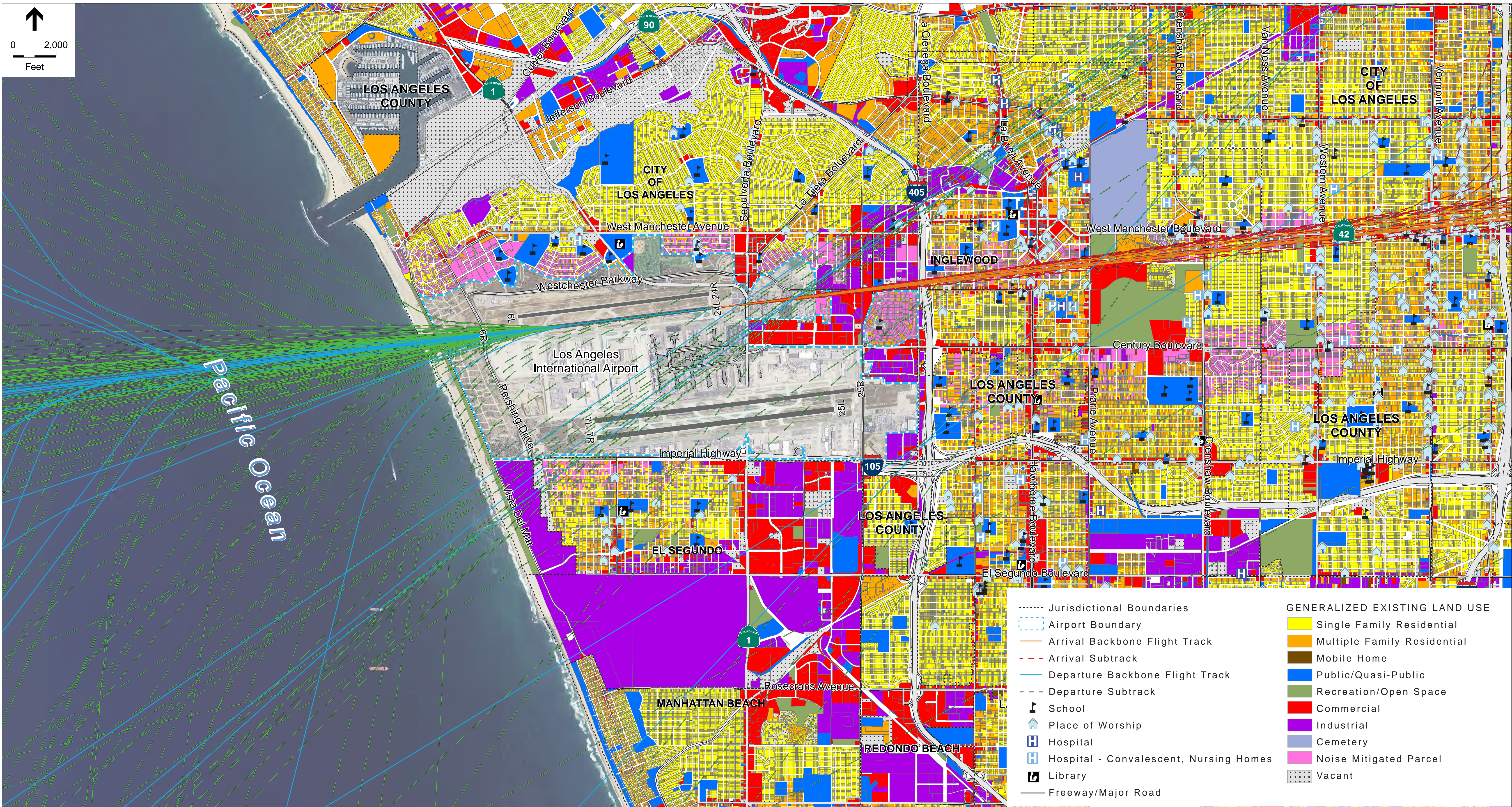




SOURCES: ESA Airports, 2014; ESRI ArcGIS Online, 2011; ESRI World Imagery - Aerial; PCR Services Corporation, 2012
 NOTE: INM = Integrated Noise Model

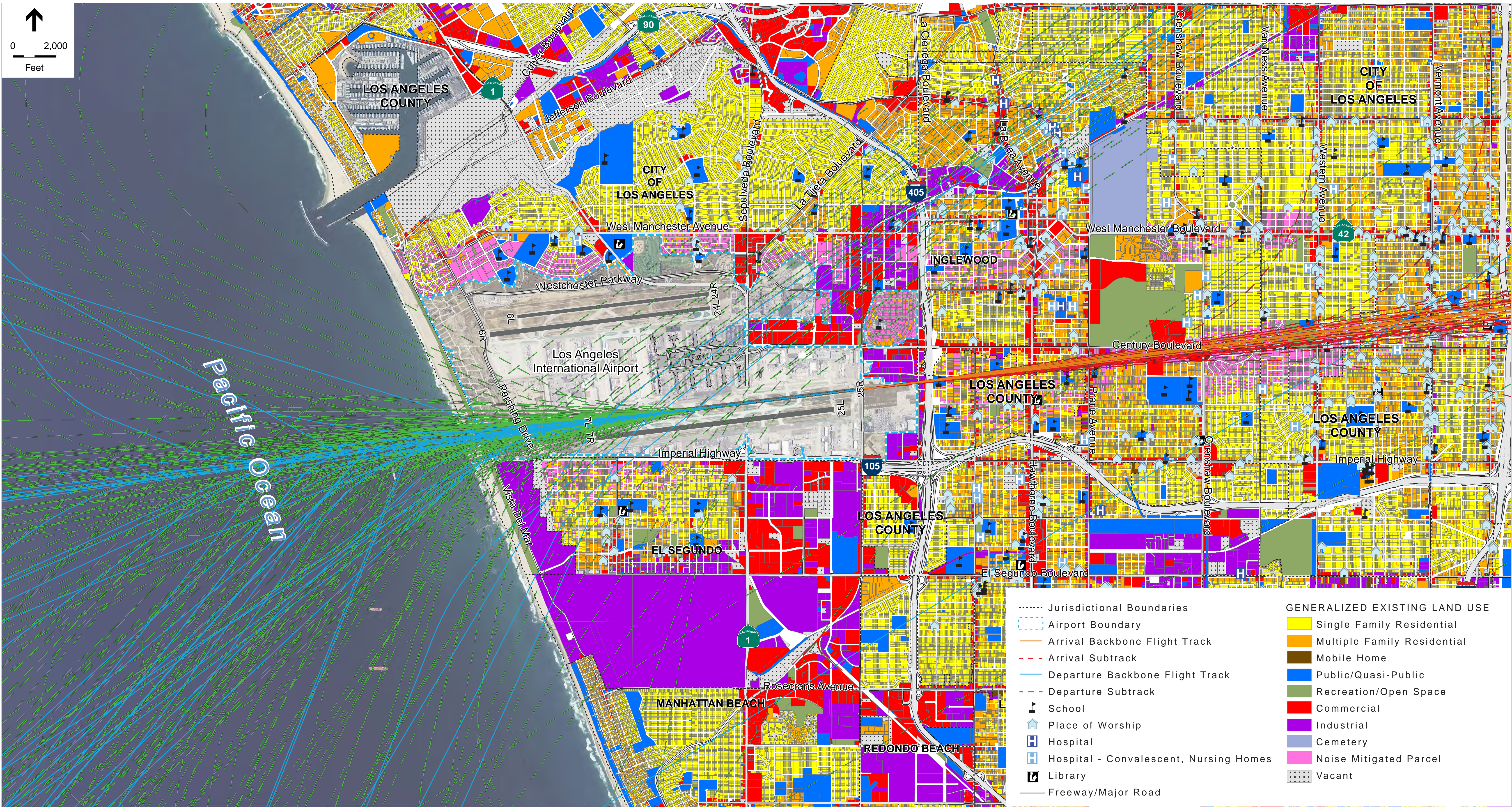
Los Angeles International Airport 14 CFR Part 150 Study . 130072.03

Exhibit 4-3
 INM Arrival and Departure Flight Tracks – Runway 24R



SOURCES: ESA Airports, 2014; ESRI ArcGIS Online, 2011; ESRI World Imagery - Aerial; PCR Services Corporation, 2012
 NOTE: INM = Integrated Noise Model

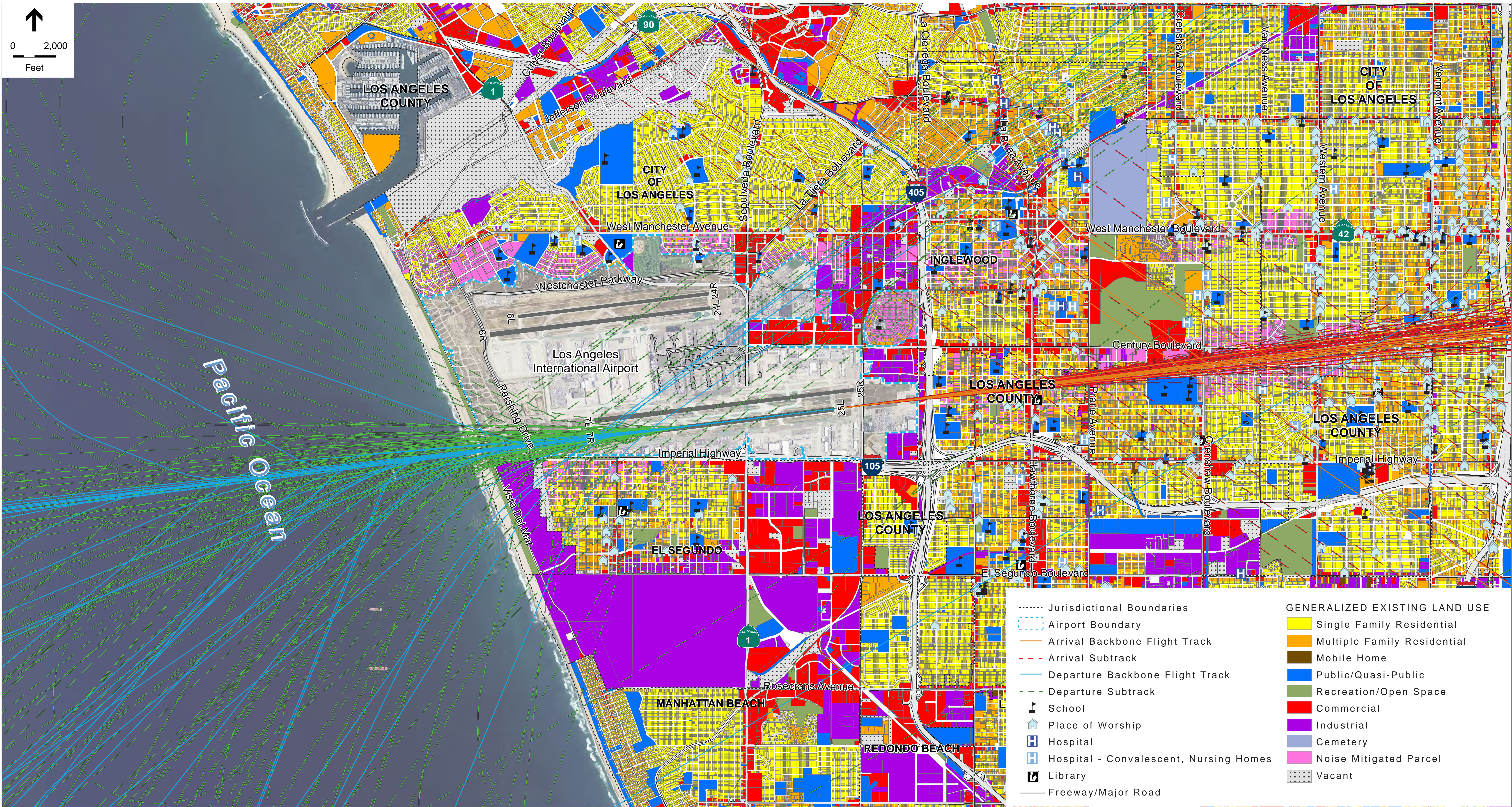
Exhibit 4-4
 INM Arrival and Departure Flight Tracks – Runway 24L



SOURCES: ESA Airports, 2014; ESRI ArcGIS Online, 2011; ESRI World Imagery - Aerial; PCR Services Corporation, 2012
 NOTE: INM = Integrated Noise Model

Los Angeles International Airport 14 CFR Part 150 Study . 130072.03

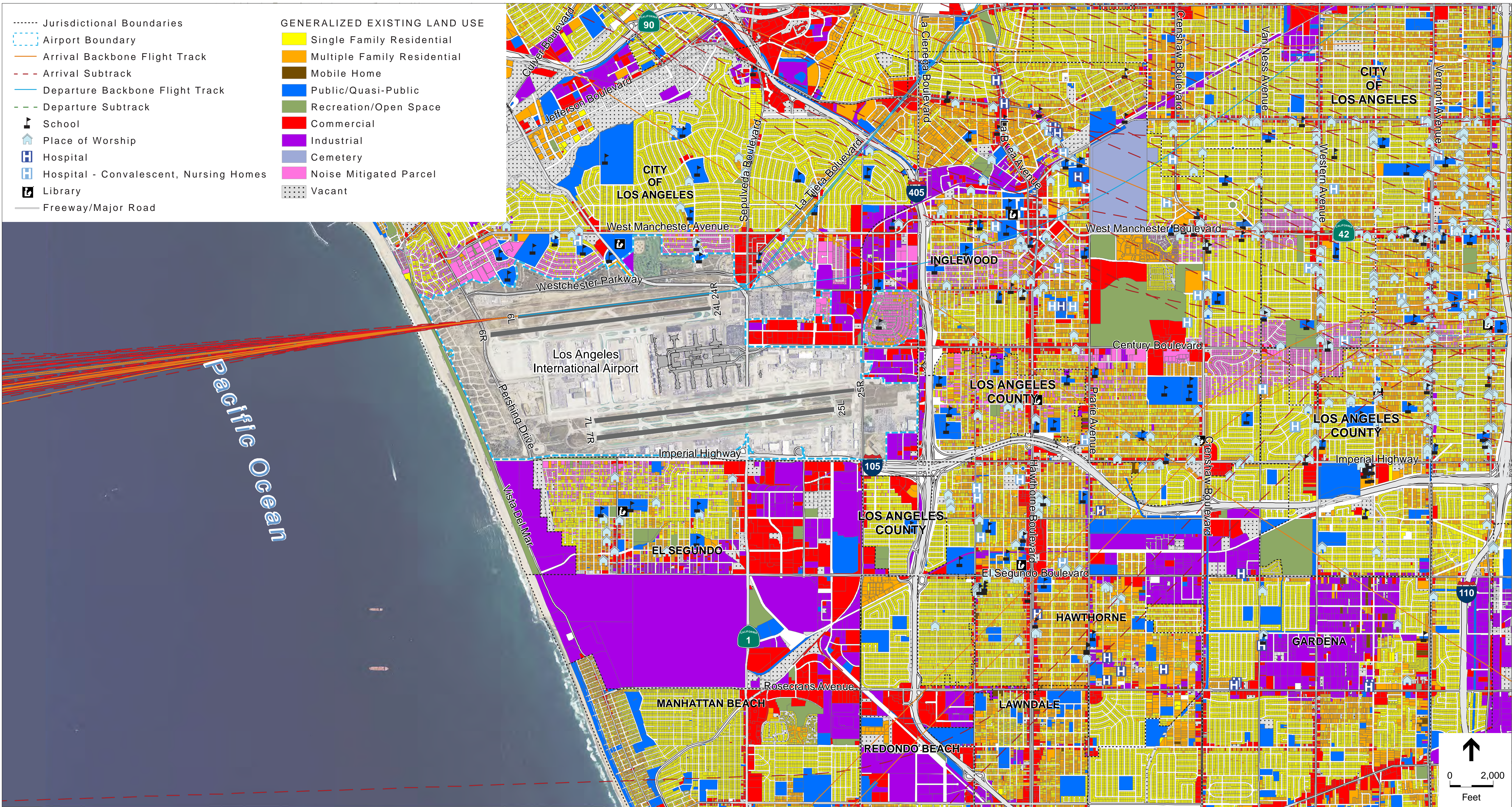
Exhibit 4-5 INM Arrival and Departure Flight Tracks – Runway 25R



SOURCES: ESA Airports, 2014; ESRI ArcGIS Online, 2011; ESRI World Imagery - Aerial; PCR Services Corporation, 2012
 NOTE: INM = Integrated Noise Model

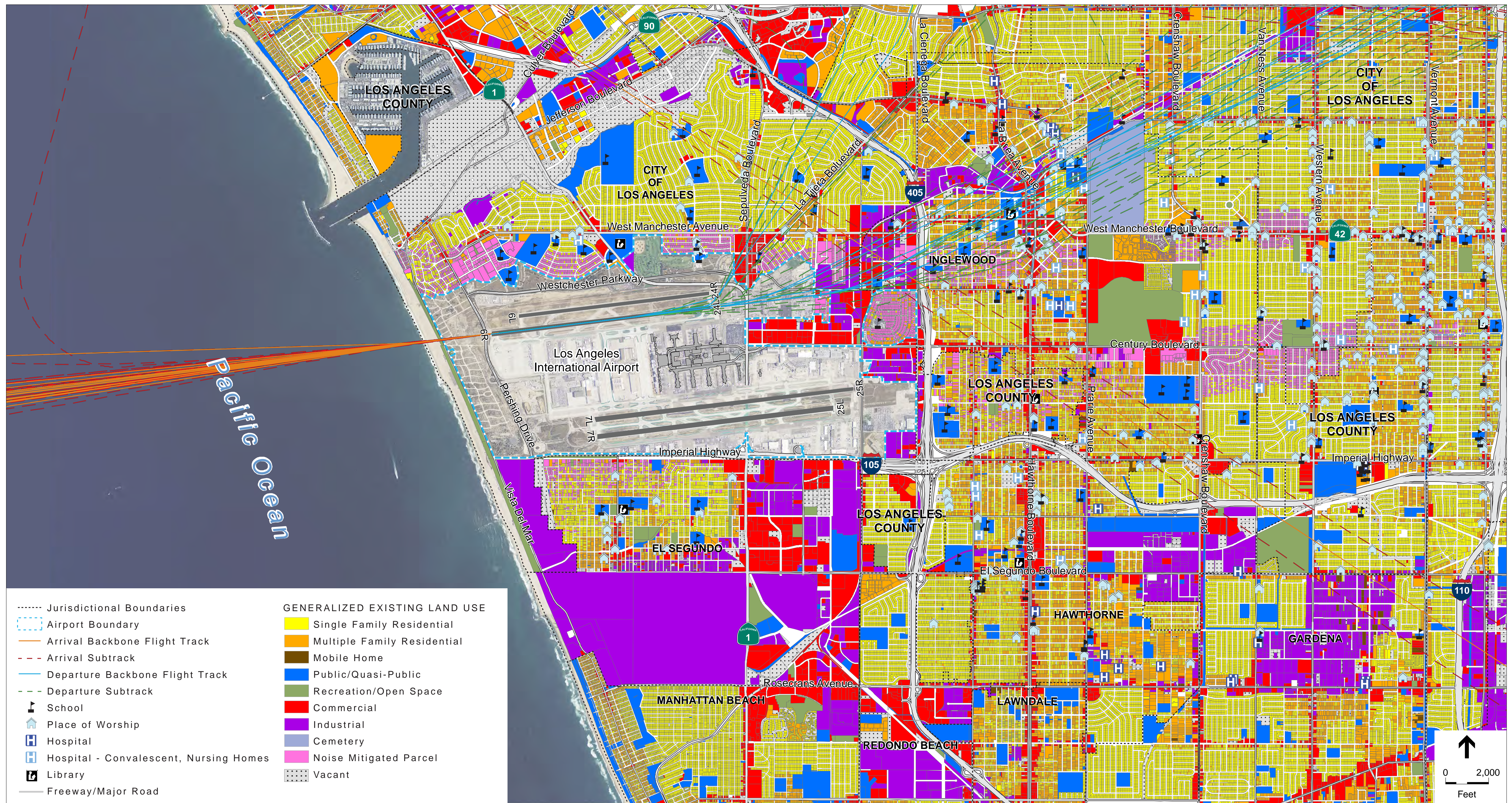
Los Angeles International Airport 14 CFR Part 150 Study . 130072.03

Exhibit 4-6
 INM Arrival and Departure Flight Tracks – Runway 25L



SOURCES: ESA Airports, 2014; ESRI ArcGIS Online, 2011; ESRI World Imagery - Aerial; PCR Services Corporation, 2012
 NOTE: INM = Integrated Noise Model

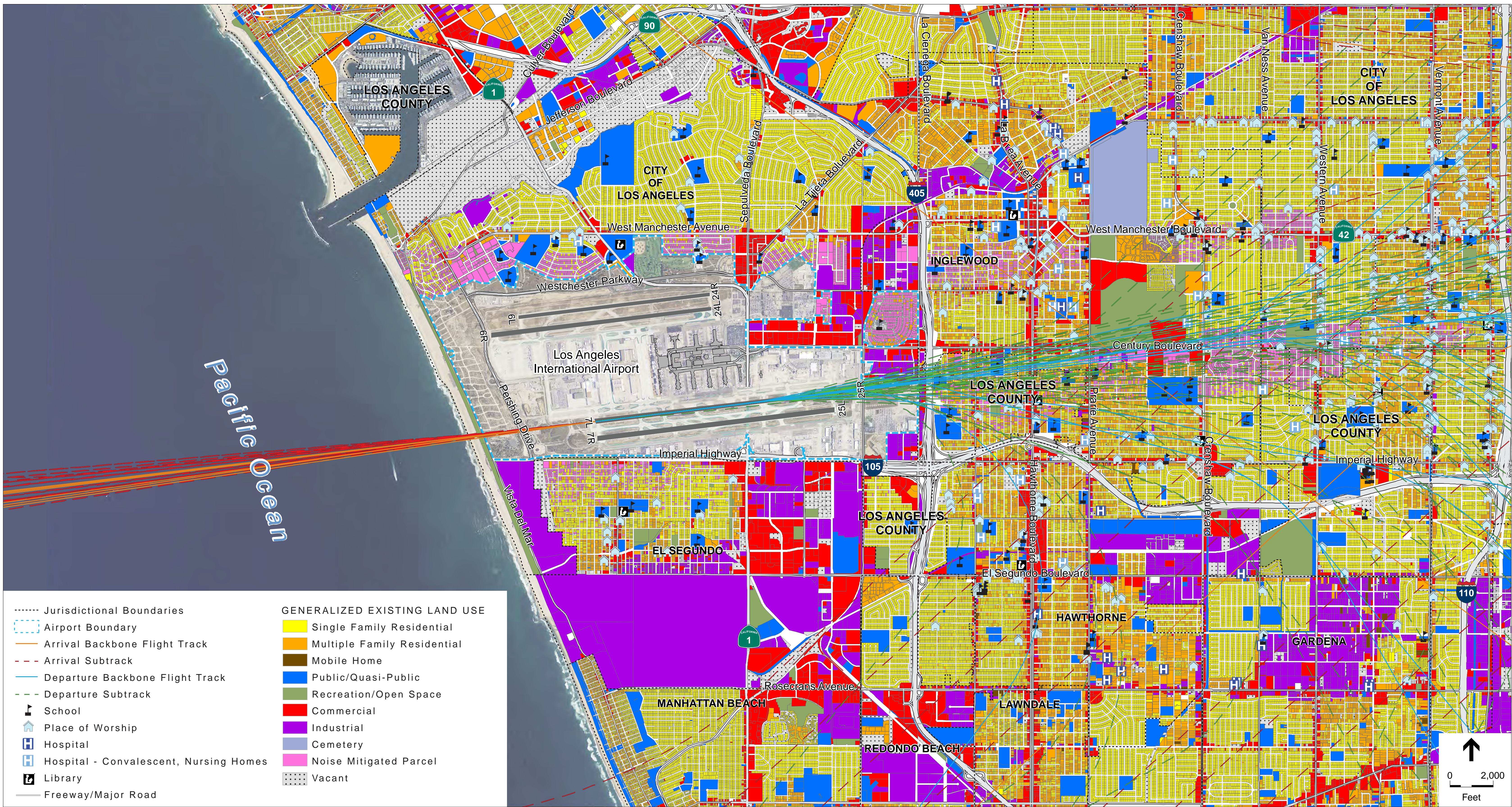
Exhibit 4-7
 INM Arrival and Departure Flight Tracks – Runway 06L



SOURCES: ESA Airports, 2014; ESRI ArcGIS Online, 2011; ESRI World Imagery - Aerial; PCR Services Corporation, 2012
 NOTE: INM = Integrated Noise Model

Los Angeles International Airport 14 CFR Part 150 Study . 130072.03

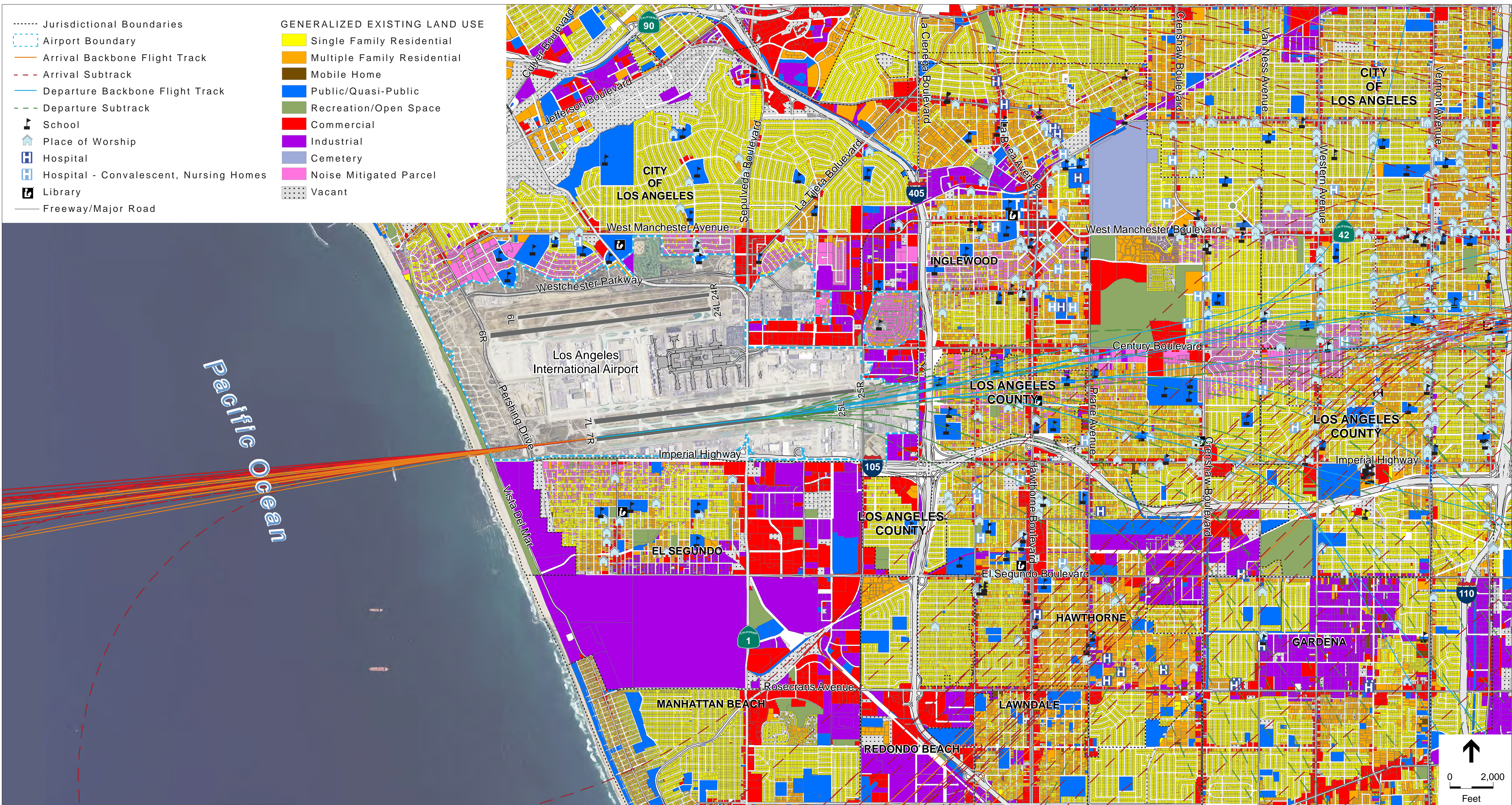
Exhibit 4-8
 INM Arrival and Departure Flight Tracks – Runway 06R



SOURCES: ESA Airports, 2014; ESRI ArcGIS Online, 2011; ESRI World Imagery - Aerial; PCR Services Corporation, 2012
 NOTE: INM = Integrated Noise Model

Los Angeles International Airport 14 CFR Part 150 Study . 130072.03

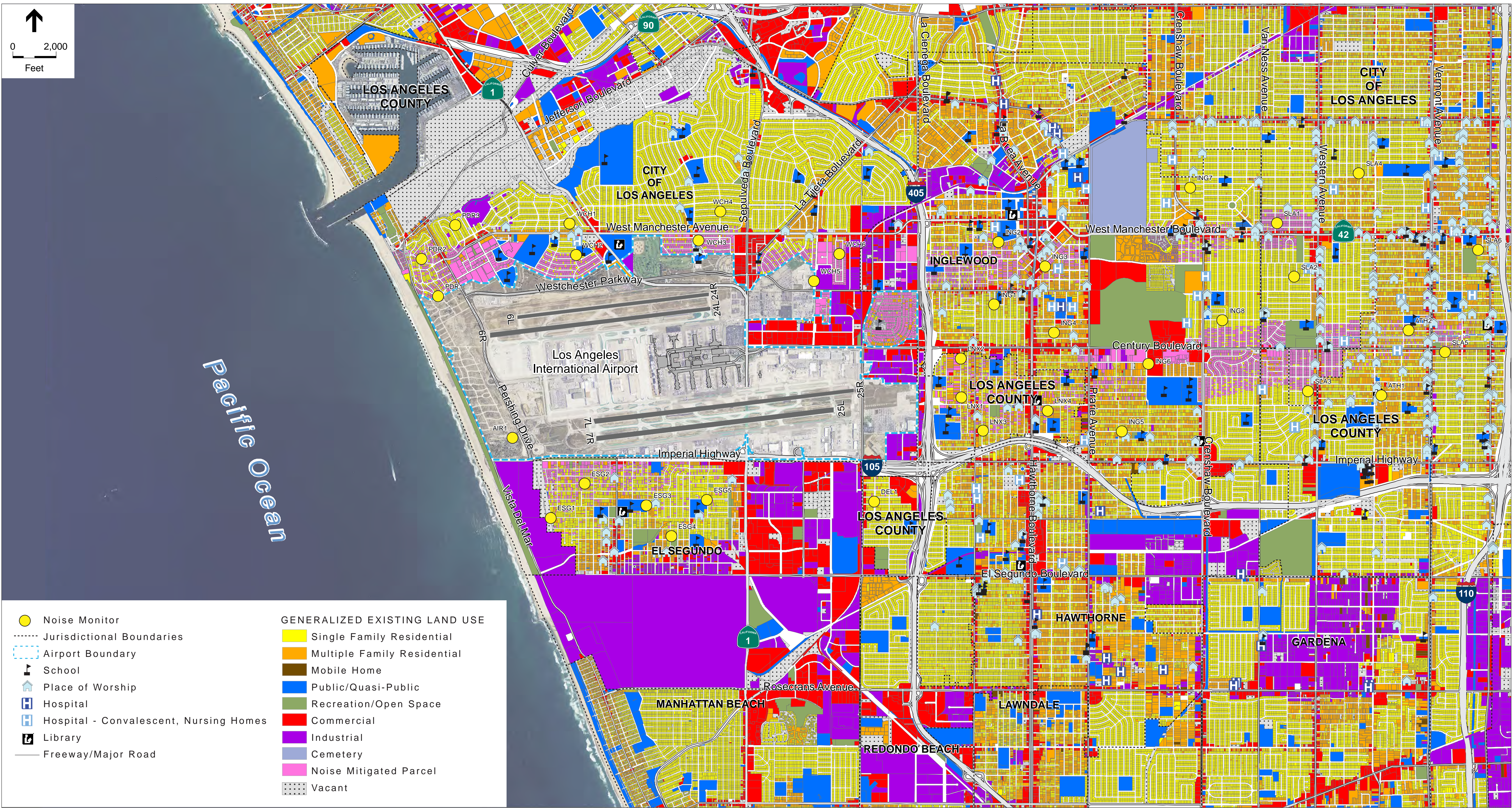
Exhibit 4-9
 INM Arrival and Departure Flight Tracks – Runway 07L



SOURCES: ESA Airports, 2014; ESRI ArcGIS Online, 2011; ESRI World Imagery - Aerial; PCR Services Corporation, 2012
 NOTE: INM = Integrated Noise Model

Los Angeles International Airport 14 CFR Part 150 Study . 130072.03

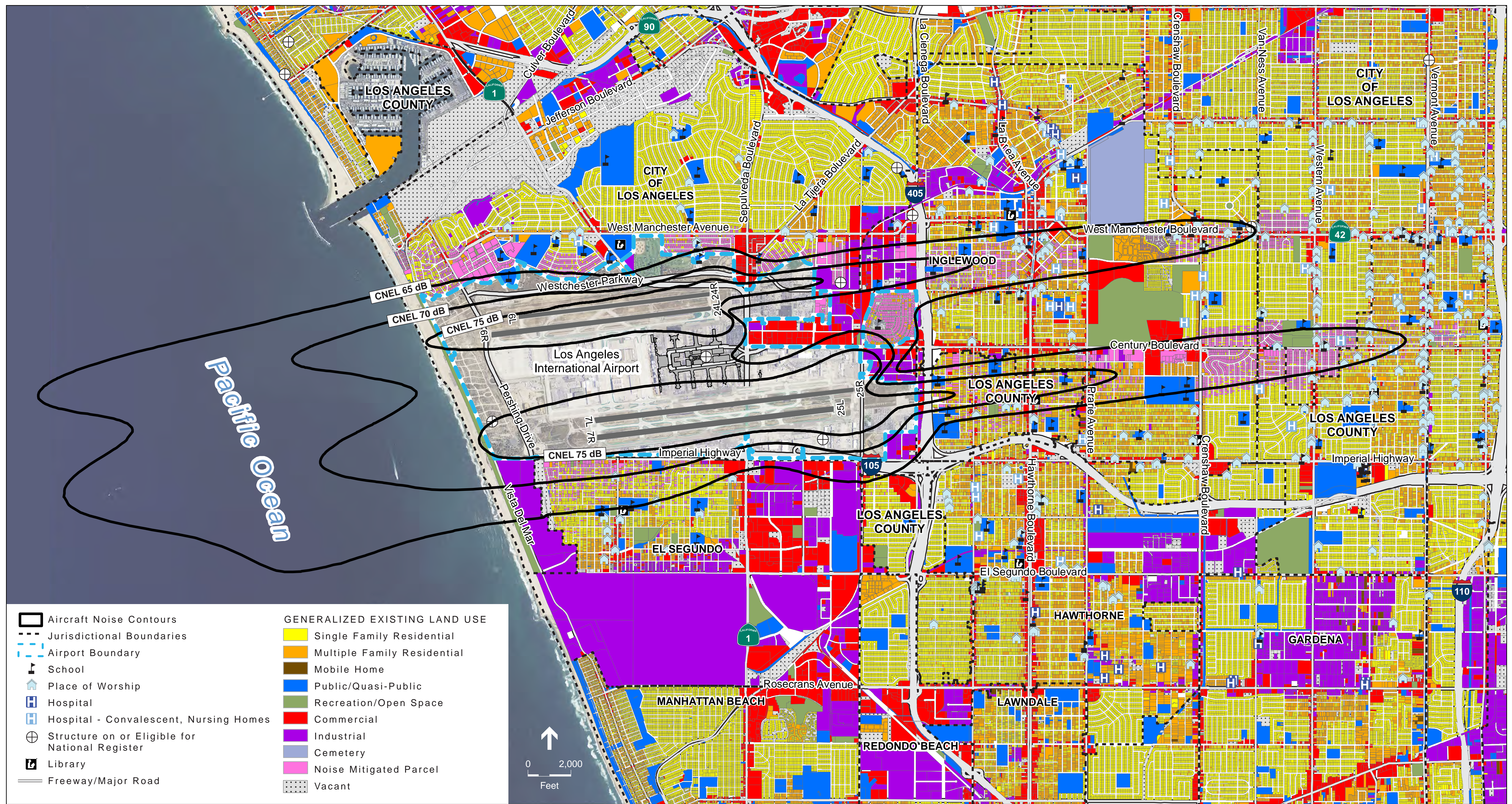
Exhibit 4-10
 INM Arrival and Departure Flight Tracks – Runway 07R



SOURCES: LAWA, 2014; ESA Airports, 2014; ESRI ArcGIS Online, 2011; ESRI World Imagery - Aerial; PCR Services Corporation, 2012
 NOTE: The following LAX noise monitors are outside the geographic extents of the exhibit – SLA7, SLA8, and SLA9.

Los Angeles International Airport 14 CFR Part 150 Study . 130072.03

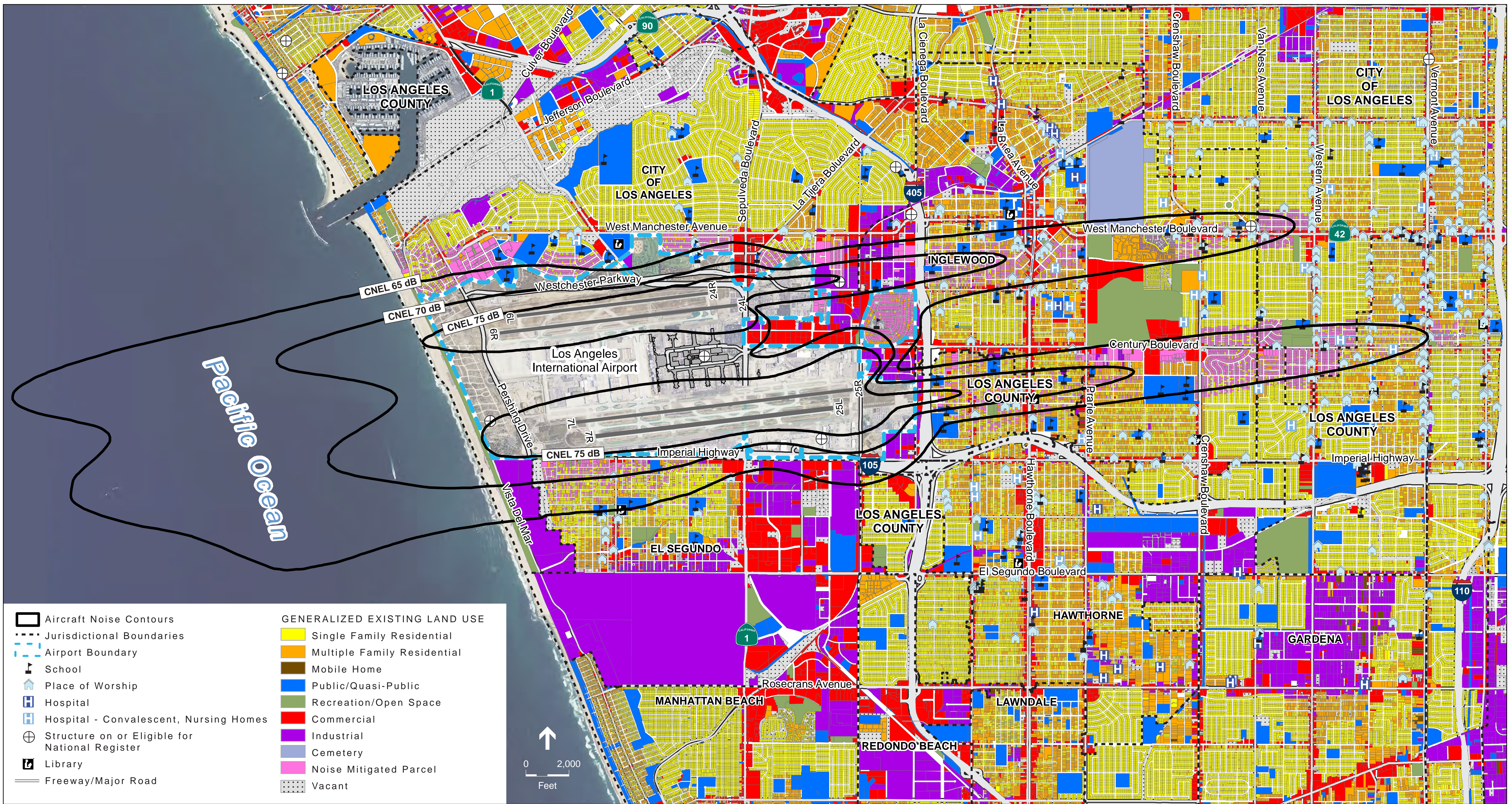
Exhibit 4-11
 Location of Noise Monitors in the Vicinity of Los Angeles International Airport



SOURCES: LAWA, 2014; ESA Airports, 2014; ESRI ArcGIS Online, 2011; ESRI World Imagery - Aerial; PCR Services Corporation, 2012
 NOTES: CNEL = Community Noise Equivalent Level; dB = Decibel.

Los Angeles International Airport 14 CFR Part 150 Study . 130072.03

Exhibit 5-1
 2015 Noise Exposure Map (Existing Conditions) - Los Angeles International Airport



SOURCES: LAWA, 2014; ESA Airports, 2014; ESRI ArcGIS Online, 2011; ESRI World Imagery - Aerial; PCR Services Corporation, 2012
 NOTES: CNEL = Community Noise Equivalent Level; dB = Decibel.

Los Angeles International Airport 14 CFR Part 150 Study . 130072.03

Exhibit 5-2
 2020 Noise Exposure Map (Future Conditions) - Los Angeles International Airport