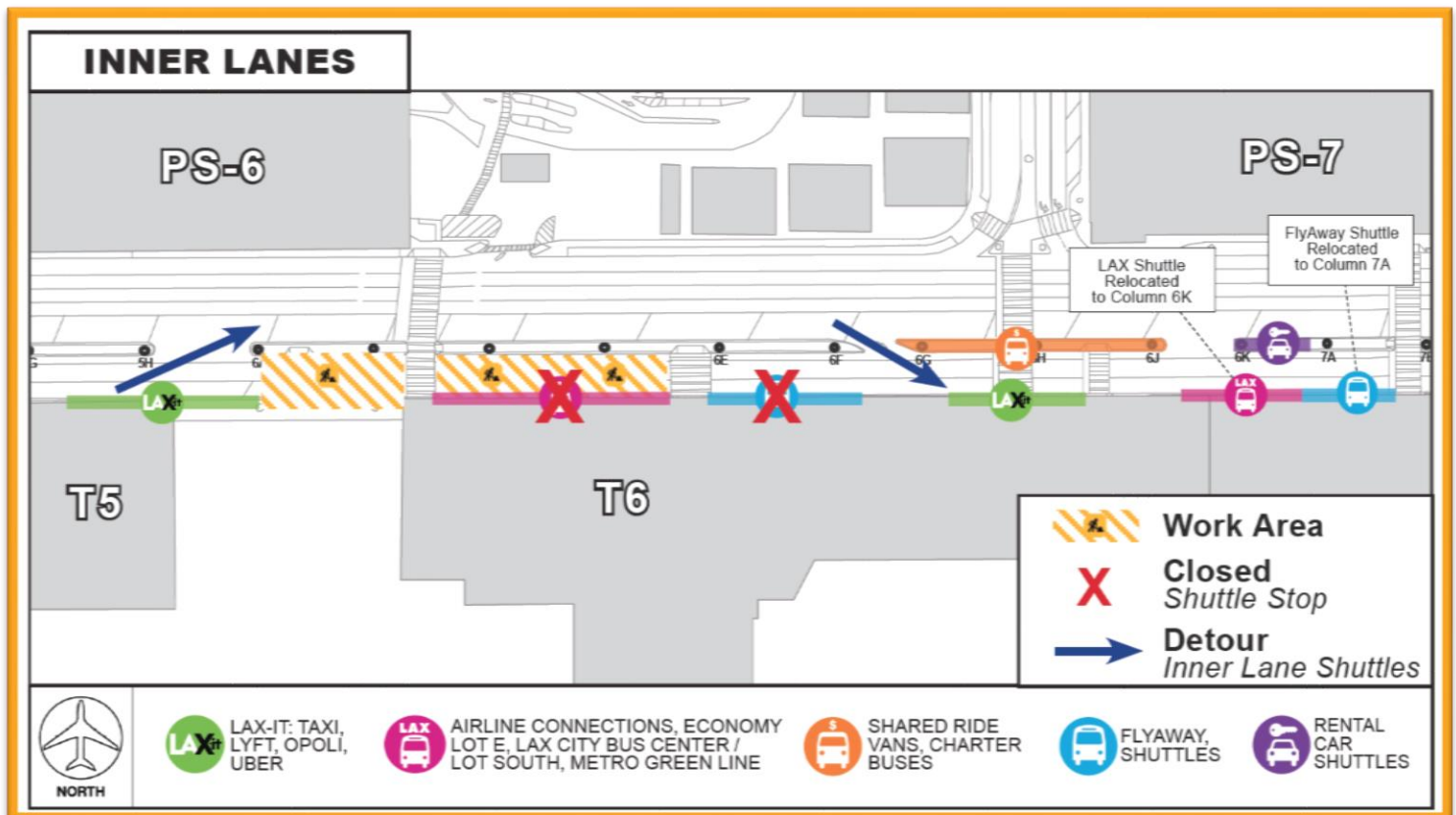


Construction Hot Topics

Week of January 11, 2021

1. Terminal 5.5: Arrivals Level Inner Lane Closure

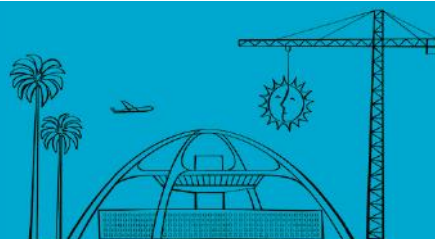
- To facilitate underground utility work for the Terminal Cores and APM Interface Project, Arrivals Level Inner Lanes and the sidewalk between Terminals 5 and 6 will be restricted continuously (24 / 7) beginning Sunday, January 17 at 10PM through Wednesday, March 24 at 8AM
- Vehicular and pedestrian traffic, shuttle operations and Smarte Carte path of travel will be maintained at all times via detours
- Signage will be posted, including for temporarily relocated shuttle stops



Terminal 5.5 Inner Lane Closure 1/17/21 – 3/24/21

Change is in the Air(port).

LAX WAY BETTER. REALLY.



Construction Hot Topics

Week of January 11, 2021

2. Project Update: Airport Police Facility

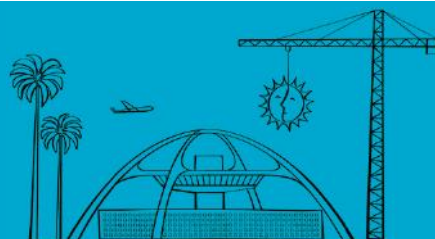
- Construction continues on the Airport Police Facility (APF) with exterior glass curtain wall and roofing system installation both nearing completion
- Finishes are also being completed inside the new police headquarter building, as well as on the construction site with construction of north and east perimeter roads ongoing
- The new building is scheduled to be complete summer 2021



The APF is located near the intersection of Westchester Parkway and Lincoln Boulevard

Change is in the Air(port).

LAX WAY BETTER. REALLY.



Construction Hot Topics

Week of January 11, 2021

3. Terminal 2: Pedestrian Bridge Demolition

- Soft demolition activity is ongoing through January 22 to prepare for the structural demolition and removal of the Pedestrian Bridge connecting Terminal 2 and Parking Structure 2A as part of the Automated People Mover (APM) project
- Barricades have been installed and the Pedestrian Bridge is now closed; temporary signage is in place
- Structural demolition is scheduled for January 28 – 30



Pedestrian Bridge between Terminal 2 and Parking Structure 2A, pictured from the Departures Level roadway looking south

Change is in the Air(port).

LAX WAY BETTER. REALLY.

