

# Construction Hot Topics

Week of January 19, 2021

## 1. Automated People Mover: Construction Update

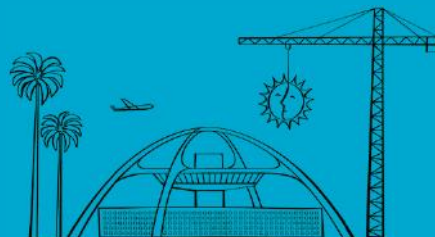
- The Automated People Mover project continues at the West Station site between Parking Structures 3 and 4
- Pictured below, paving activity is ongoing for the Ground Level of the parking structure that is being built beneath the future APM Guideway
- Two tower cranes (red) can be seen from around the Central Terminal Area assisting with this and other construction at the West Station site



*Automated People Mover paving of Ground Level at future West Station site between Parking Structures 3 & 4*

Change is in the Air(port).

**LAX** WAY BETTER. REALLY.

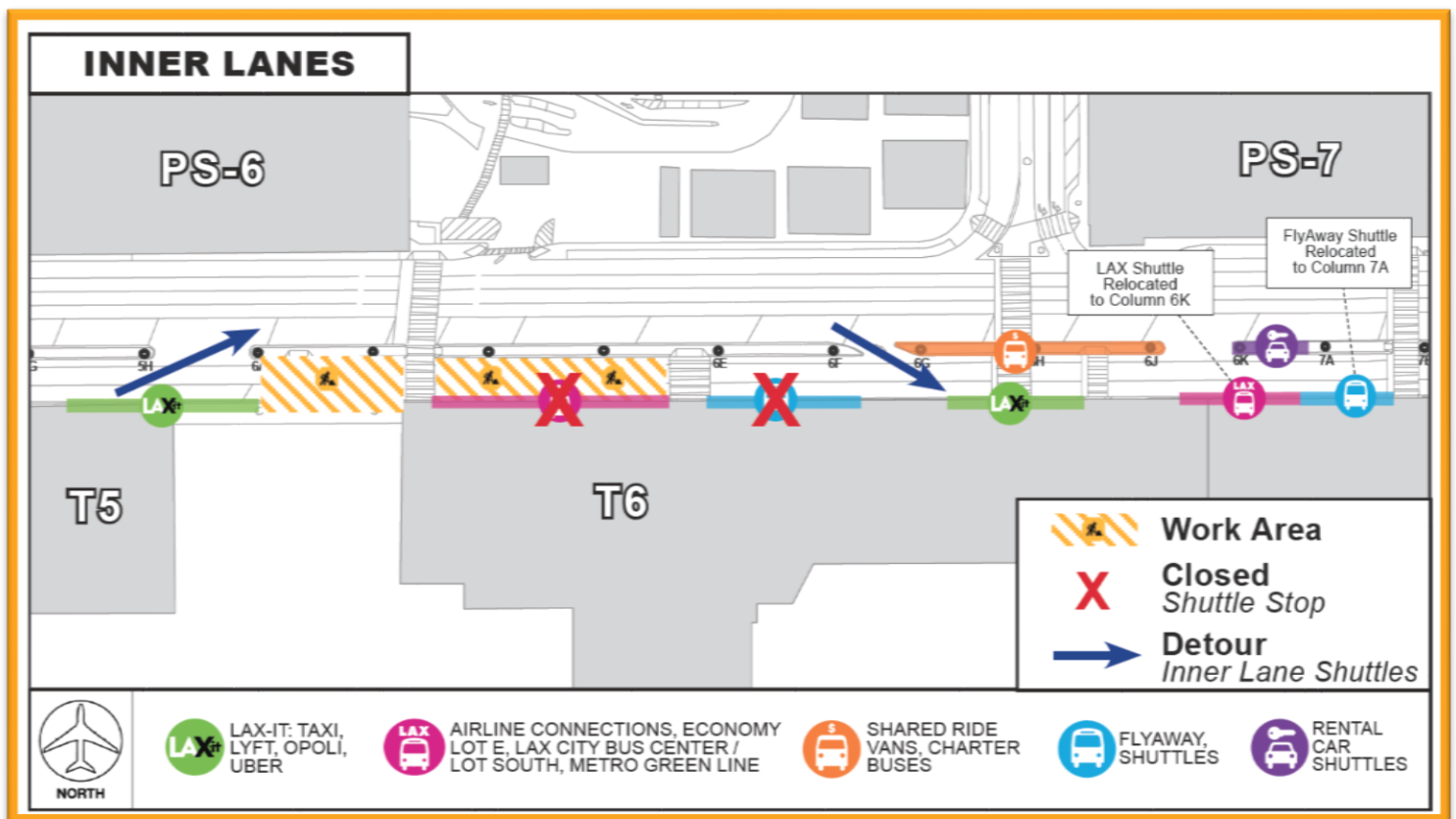


# Construction Hot Topics

Week of January 19, 2021

## 2. Terminal 5.5: Arrivals Level Inner Lane Closure

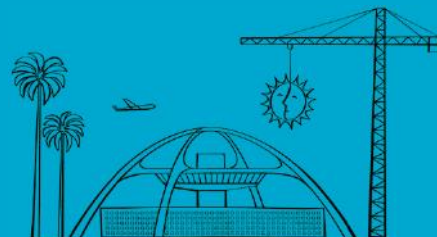
- All Arrivals Level Inner Lanes between Terminals 5 and 6 are closed 24/7 through March 24 to facilitate underground utility work for the Terminal Cores and APM Interface Project
- Detours and wayfinding signage are in place to maintain vehicular and pedestrian traffic
- Signage is posted directing guests to the next available shuttle stops where existing stops are closed or relocated



Terminal 5.5 Inner Lane Closure 1/17/21 – 3/24/21

Change is in the Air(port).

**LAX** WAY BETTER. REALLY.



# Construction Hot Topics

Week of January 19, 2021

## 3. Terminal 2 / 3: Construction Update

- Progress continues on the Terminal 2 / 3 Head House as part of the Delta Sky Way project
- At the west end of the future Head House building (closer to Terminal 3) installation of glass paneling is nearing completion with the façade of the building looking more like the final rendering with each day
- At the east end of the building, curtain wall installation has begun; if you look closely you can see where the future APM Center Station pedestrian bridge will connect with the structure!



*Terminal 2 / 3 Head House glazing & curtain wall installation*



Change is in the Air(port).

**LAX** WAY BETTER. REALLY.

