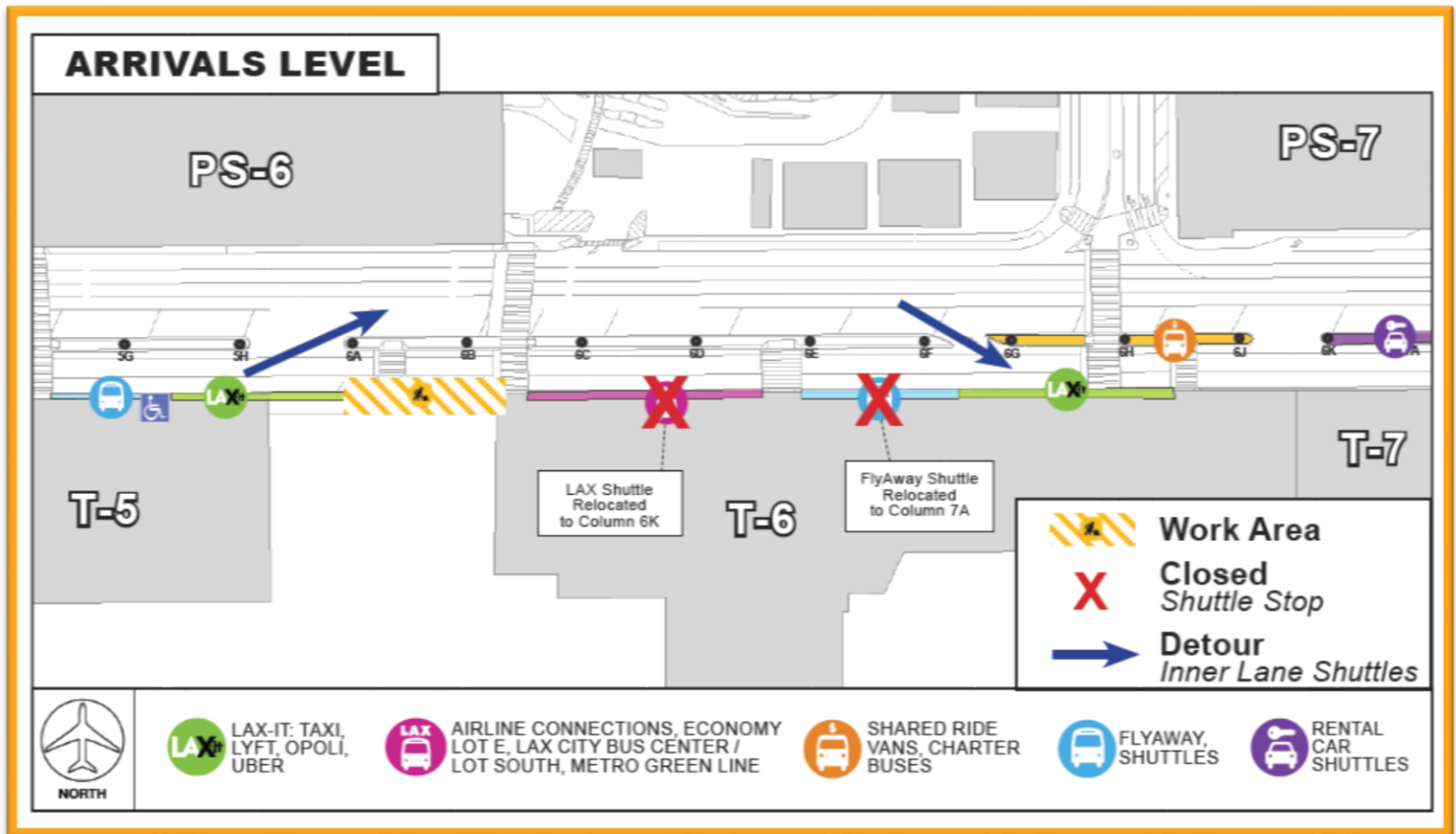


Construction Hot Topics

Week of November 1, 2021

1. Terminal 5.5: Arrivals Inner Lane & Sidewalk Restrictions

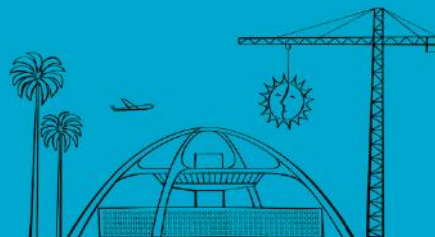
- To repair portions of the Arrivals Level sidewalk between Terminals 5 & 6, all inner lanes between Columns 6A and 6F and the sidewalk will be closed nightly this week through Friday, November 5 (12AM to 8AM)
- The LAX and FlyAway shuttles at this area will be temporarily relocated during nightly work hours; signage will be in place
- Pedestrian path of travel will be maintained via detours to the center median island; please watch for posted signs and always use caution when traveling through construction areas



T5.5 Arrivals Level Nightly Restrictions

Change is in the Air(port).

LAX WAY BETTER. REALLY.

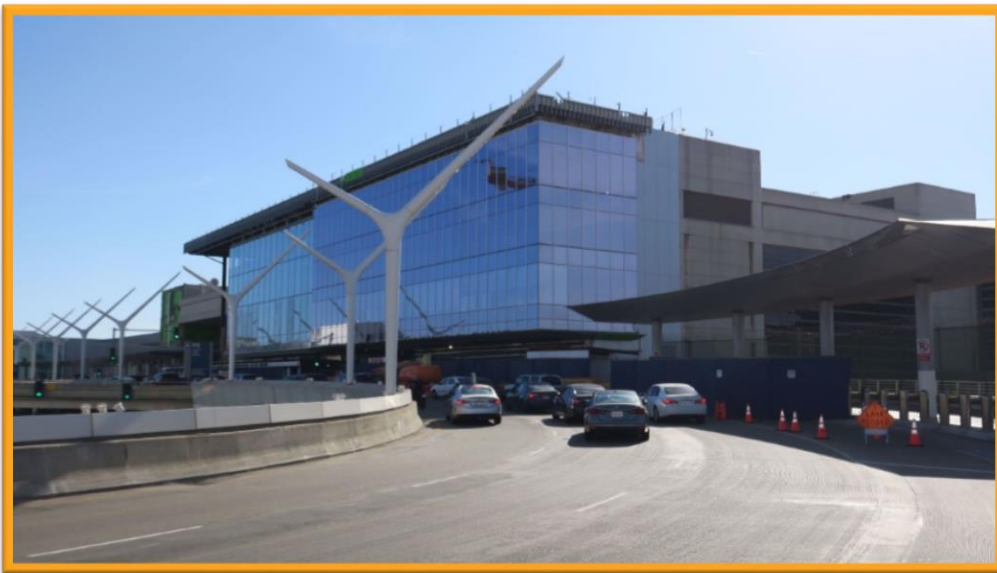


Construction Hot Topics

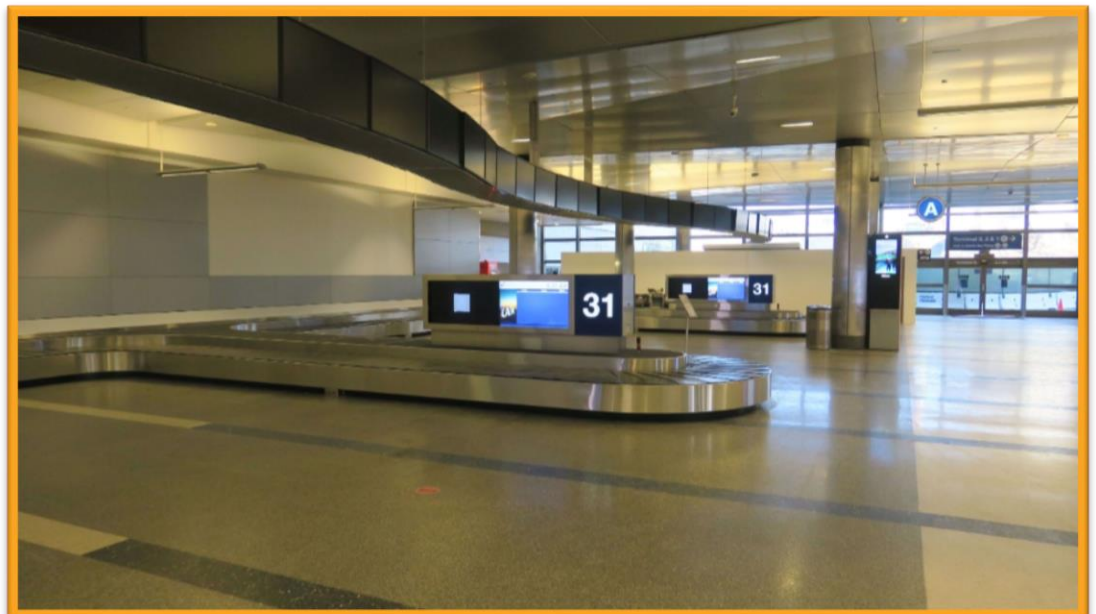
Week of November 1, 2021

2. Terminal B: Construction Progress

- Construction of the new Vertical Core at Terminal B continues to make great progress as illustrated in the photos below
- New escalators and stairs at the terminal's north end are scheduled to open this month; signage is currently in place directing guests to the south escalators while north ones are unavailable
- As part of the modernization effort, a new bag claim carousel has recently opened at the Terminal's north end



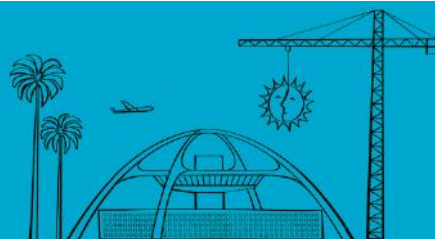
Terminal B Vertical Core Progress as of November 2021



A new bag claim carousel (#31) has opened at Terminal B's north end

Change is in the Air(port).

LAX WAY BETTER. REALLY.

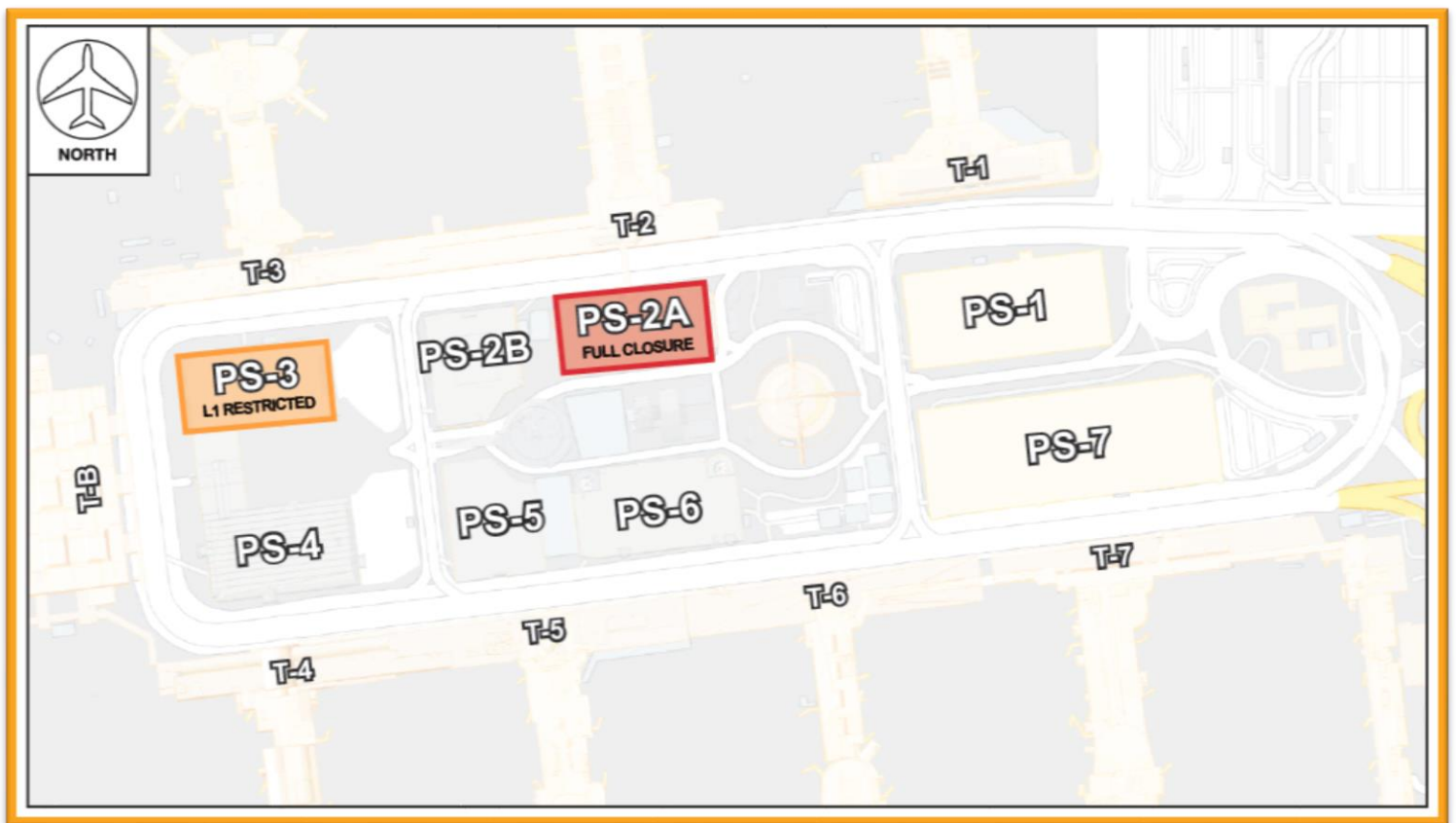


Construction Hot Topics

Week of November 1, 2021

3. Parking Structure 2A: Full Closure Extended

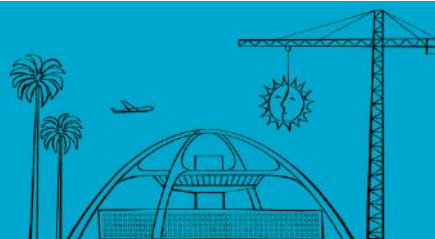
- Painting work for the Smart Parking Project, which originally closed Parking Structure 2A through Tuesday, November 2, has been extended through Friday, November 19
- Vehicles can still egress the structure if currently parked there
- Work over the span of the project will include painting, installation of a Parking Guidance System, and other civil modifications
- Through November 19, Parking Structure 3, Level 1 will also be closed to all vehicles except Taxis and CBP Vehicles; public passenger pickup, including charter vehicles, will not have access
- ABM Staff is present to assist with all operations; Signage is posted to assist with alternative parking options and detours



PS-2A & PS-3 Construction Impacts - Extended

Change is in the Air(port).

LAX WAY BETTER. REALLY.



Construction Hot Topics

Week of November 1, 2021

4. November 2021: 24/7 CTA Lane Restrictions

- Scheduled 24/7 lane restrictions for Departures / Upper and Arrivals / Lower level roadways are illustrated on the map below for the month of November 2021
- Traffic will be maintained at all times; please plan ahead



Change is in the Air(port).

LAX WAY BETTER. REALLY.

