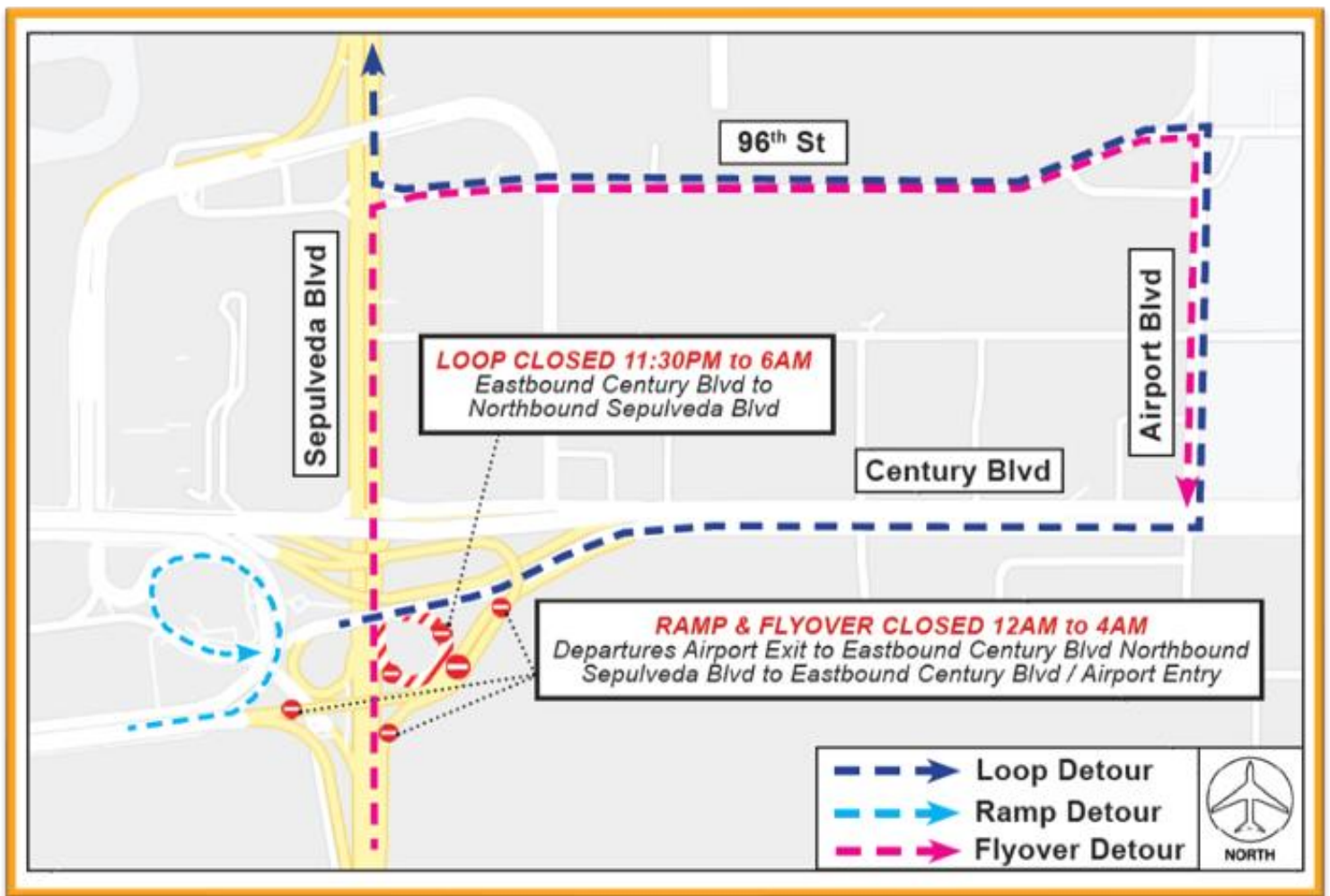


# Construction Hot Topics

Week of July 5, 2022

## 1. LAX East Loop, Ramp & Flyover Scheduled Impacts

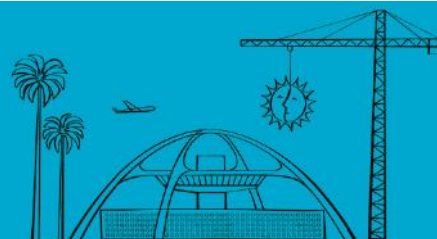
- To perform work for the Automated People Mover project, there will be nightly closures of the following areas next week (July 11 – 20):
  - *Eastbound Century Boulevard to northbound Sepulveda Boulevard Loop: 11:30PM to 6AM*
  - *Departures Level Airport Exit to eastbound Century Boulevard Ramp / Northbound Sepulveda Boulevard to Eastbound Century Boulevard / Airport Entry Flyover: 12AM to 4AM*
- Motorists may use Century Boulevard, Airport Boulevard and 96th Street for Loop & Flyover detours, and Departures Level Circle Way to Arrivals Level Center Way for Ramp detours
- Signage will be in place



Nightly Impacts to the East Loop, LAX Ramp & Flyover 7/11 – 7/20

Change is in the Air(port).

**LAX** WAY BETTER. REALLY.



# Construction Hot Topics

Week of July 5, 2022

## 2. Sepulveda Boulevard Tunnel Cleaning

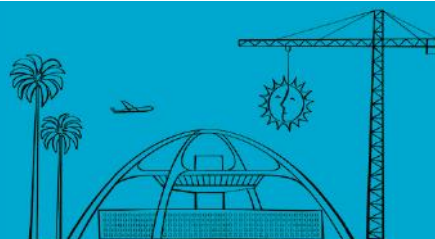
- The Sepulveda Tunnel will experience nightly (11pm – 5am) lane restrictions next week (July 11 – 15) for cleaning by the City of Los Angeles Bureau of Street Services
- Two lanes on either northbound or southbound Sepulveda Boulevard will be closed each night through Friday; one lane will be maintained at all times

*Sepulveda Boulevard Tunnel Cleaning by BSS*



Change is in the Air(port).

**LAX** WAY BETTER. REALLY.



# Construction Hot Topics

Week of July 5, 2022

## 3. Construction Update: Automated People Mover in the Central Terminal Area

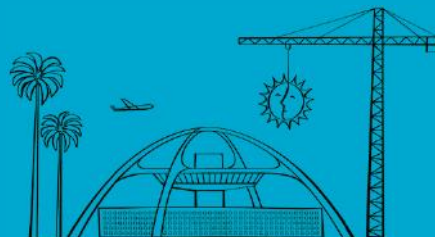
- APM construction inside the CTA continues to make great progress, as seen in the aerial photo below (viewpoint: looking south; LAX-it on left side of photo, Tom Bradley International Terminal on right side)
- Five out of six Pedestrian Bridge structures have been installed to connect the three APM Stations inside the CTA with our terminals; the final bridge is scheduled to be installed at Terminal B later this year
- In May, structural steel installation was completed at the Center CTA Station, which is just to the west of the Theme Building; the three CTA stations combined with the three stations east of Sepulveda make six total APM stations, five of which have reached this milestone with structural steel
- Watch Construction Hot Topics for more updates on this and other project milestones



*Aerial imagery of the Automated People Mover guideway, stations and pedestrian bridges in the Central Terminal Area*

Change is in the Air(port).

**LAX** WAY BETTER. REALLY.

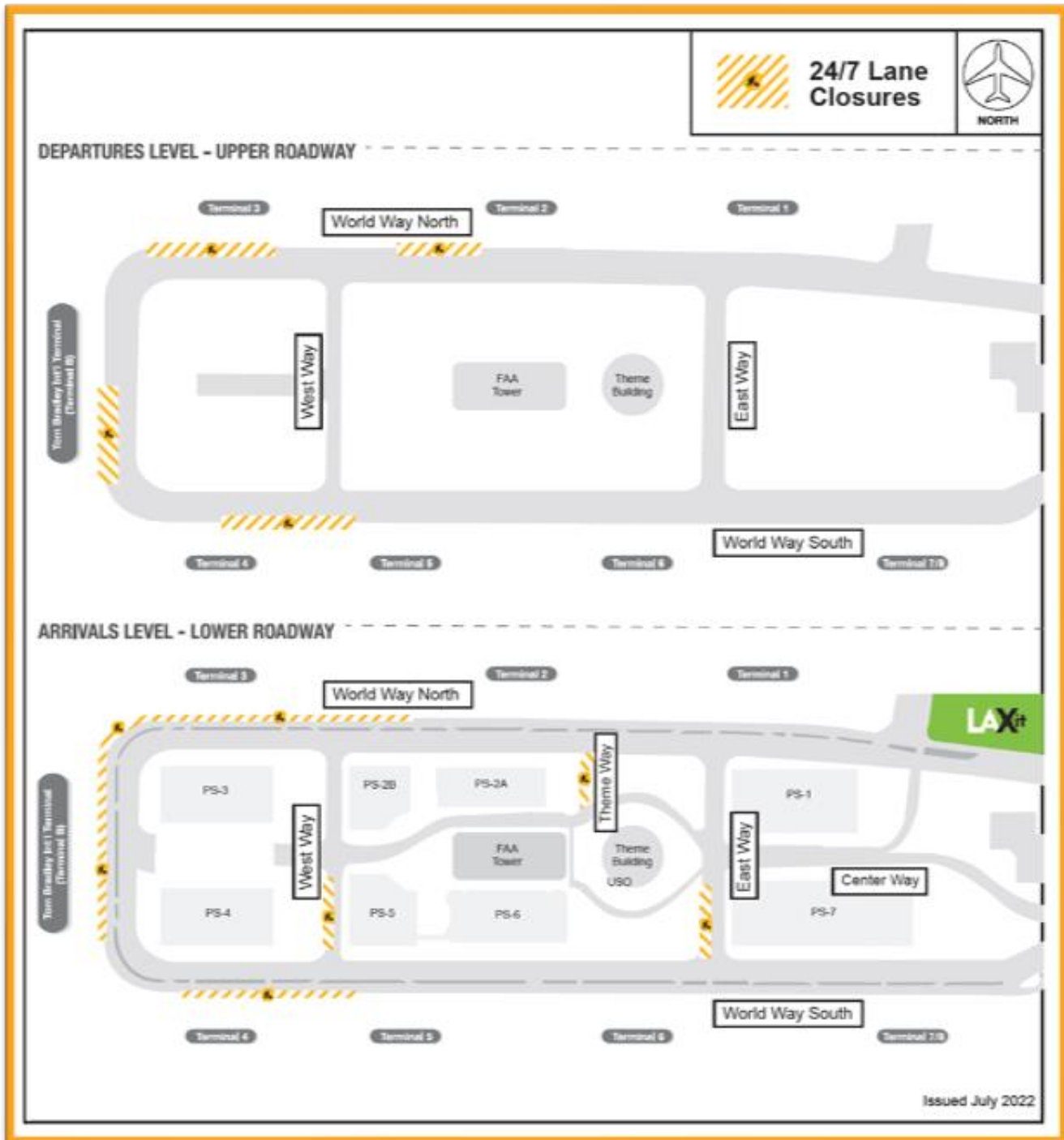


# Construction Hot Topics

Week of July 5, 2022

## 4. July 2022: 24/7 CTA Lane Restrictions

- Scheduled 24/7 lane restrictions for Departures / Upper & Arrivals / Lower Level roadways are illustrated on the map below for the month of July 2022
- Traffic will be maintained at all times; please plan ahead



Change is in the Air(port).

**LAX** WAY BETTER. REALLY.

